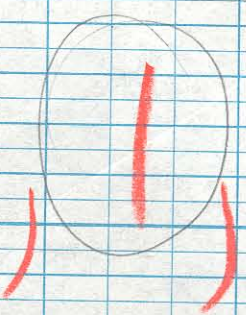


24

Handwritten red scribbles



12

Handwritten red scribbles

6

Handwritten red scribbles

24

20

15

10

5

0

18

12

20

15

10

5

0

6

20

15

10

5

0

24

35

30

25

20

15

10

5

0

35

30

25

20

15

10

5

0

35

30

25

20

15

10

5

0

24

40
35
30
25
20
15
10
5
0

24

30

35

40

40
35
30
25
20
15
10
5
0

12

30

35

40

40
35
30
25
20
15
10
5
0

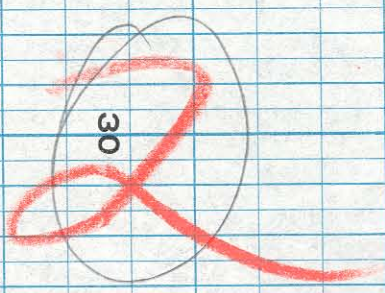
6

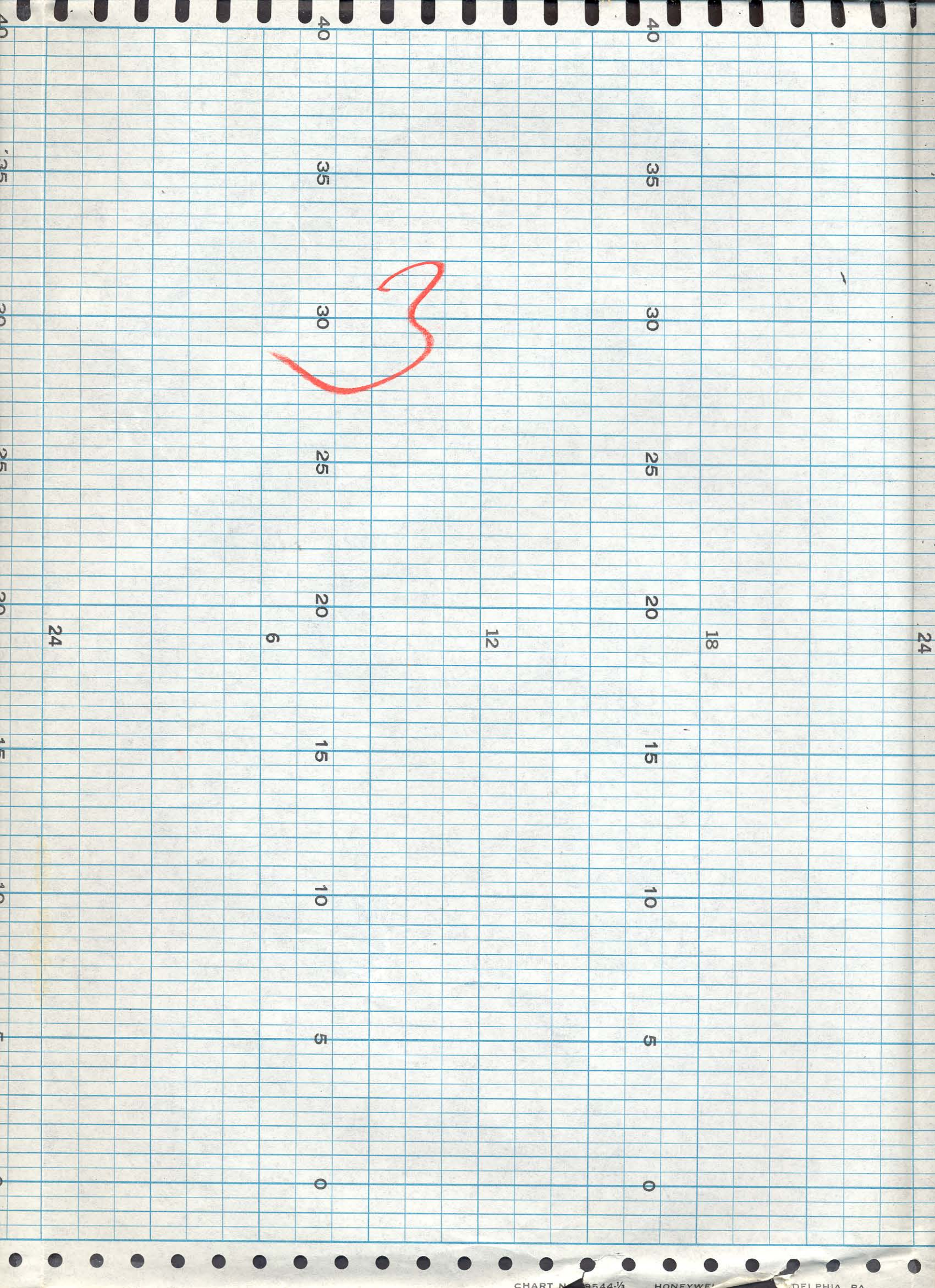
30

35

40

24





Come off.

24

Turbidity blue out

No response on Tide, Wind, D.O.,
Cond. Temp.

20

15

10

5

0

18

35

30

25

20

15

10

5

0



35

30

25

20

15

10

5

0

12

40

35

30

25

20

15

10

5

0

6

40

35

30

25

20

15

10

5

0

24

Sept. 68

35

30

Sept. 5, 1968
1003

25

20

15

10

5

0

Pump off & ink pads had
come off.

25

20

12

15

10

5

0

no good
no bulb

0

35

30

25

20

15

10

5

0

18

24

5 Sept. 68

NO parameter printing correctly
NO response in span or zero set.

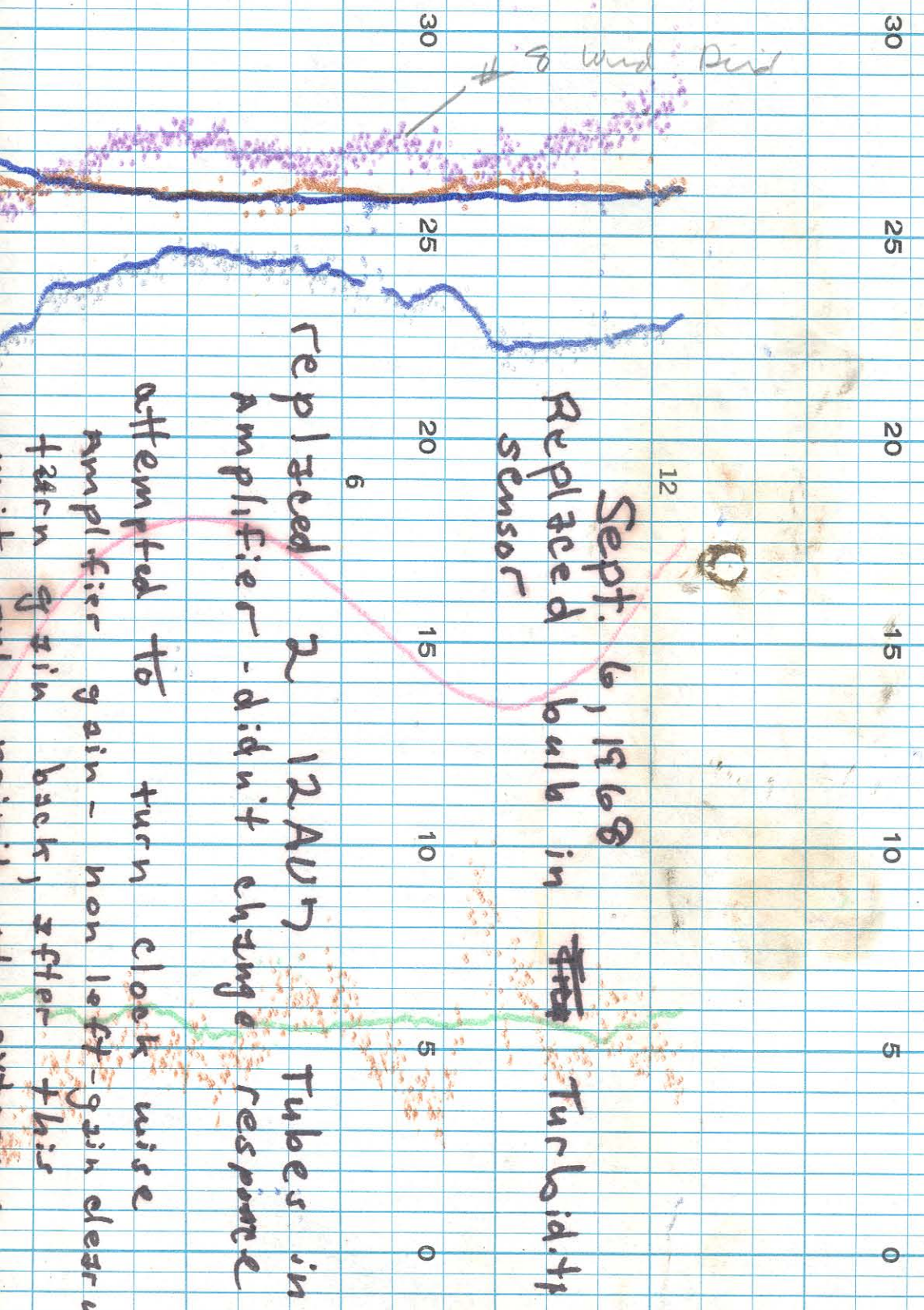


1330
5 Sept. 68

attempted to turn clock wise
 amplifier gain - non left-gain clear up
 turn gain back, after this
 unit only print at extreme
 top of scale
 there will remove
 amplifier
 shut unit down
 left water pump running

- 1 - T R
- 2 - T Black
- 3 - C Brown
- 4 - Tm - G
- 5 - Tm - Purple
- 6 - W - Brown
- 7 - D.O - Blue
- 8 - W - Blue

35

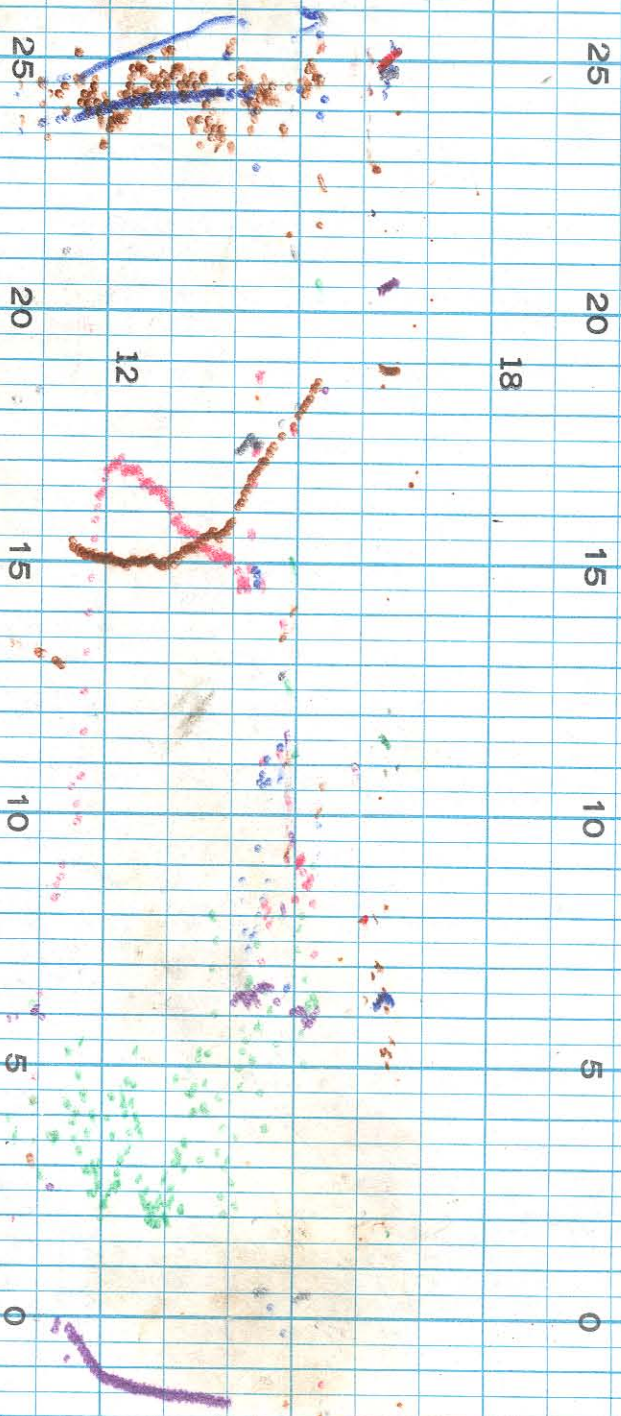


Sept. 6, 1968
 Replaced bulb in ~~the~~ Turbidity sensor

Replaced 2 12AV7 Tubes in amplifier - didn't change response

attempted to turn clock wise amplifier gain - non left gain clear up + turn gain back, after this

29 Sept. 68
10



10 Sept. 68

all parameters readily seen & open
except wind direction
and turbidity

24

40
35
30
25
20
15
10
5
0

35

30

25

20

15

10

5

0

18

40
35
30
25
20
15
10
5
0

35

30

25

20

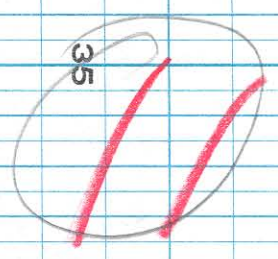
15

10

5

0

12



40
35
30
25
20
15
10
5
0

35

30

25

20

15

10

5

0

6

24

24

18

20

12

6

24

R

40

35

30

25

20

15

10

5

0

40

35

30

25

20

15

10

5

0

24

40 35 30 25 20 15 10 5 0

18

13

40 35 30 25 20 15 10 5 0

12

6

40 35 30 25 20 15 10 5 0

24

24

20

35

30

25

15

10

5

0

40

18

20

35

30

25

15

10

5

0

40

12

III

20

35

30

25

15

10

5

0

40

6

24

5

40
35
30
25
20
15
10
5
0

18

12

40
35
30
25
20
15
10
5
0

6

24

24

40 35 30 25 20 15 10 5 0

18

9

40 35 30 25 20 15 10 5 0

12

40 35 30 25 20 15 10 5 0

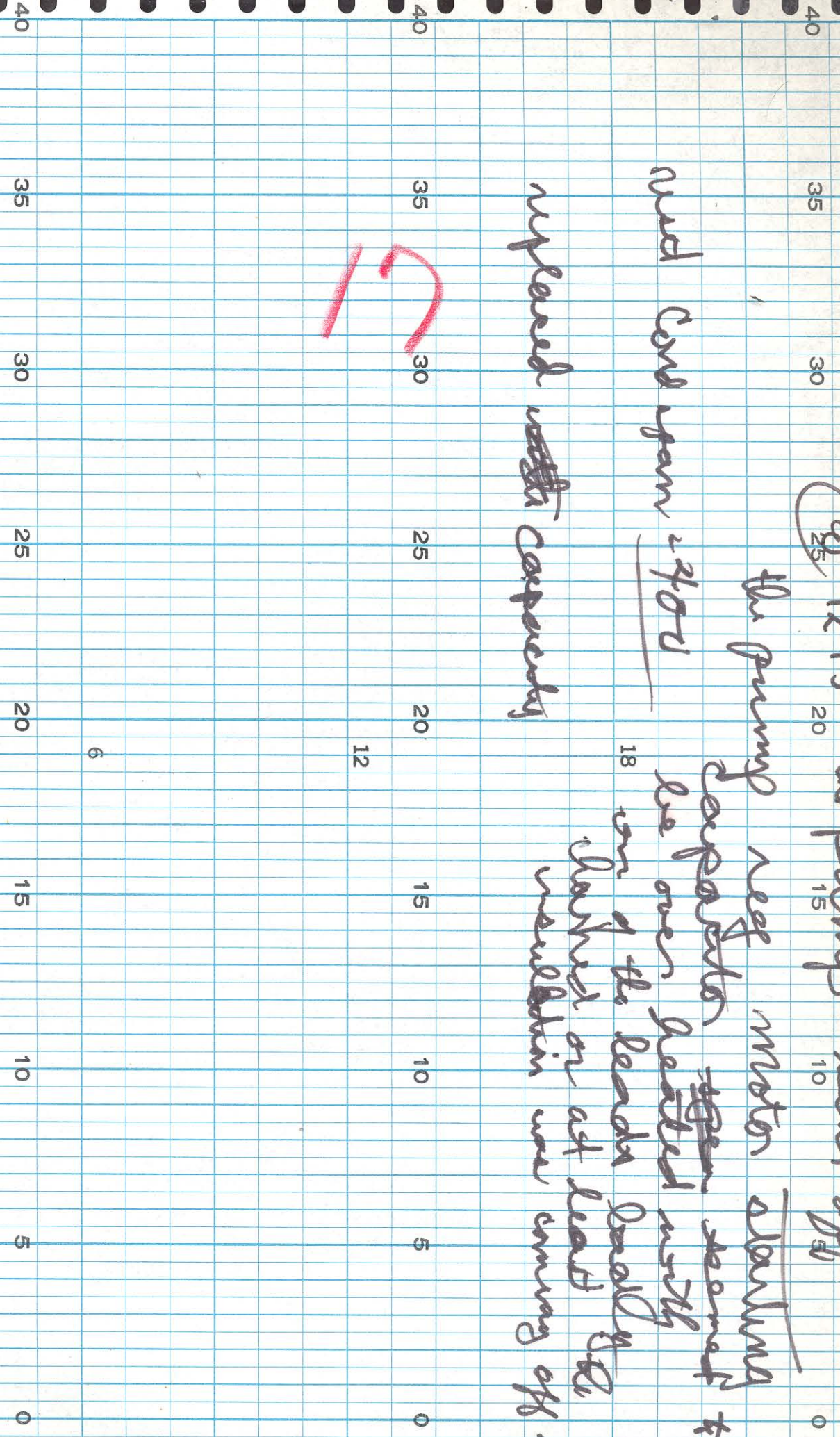
24

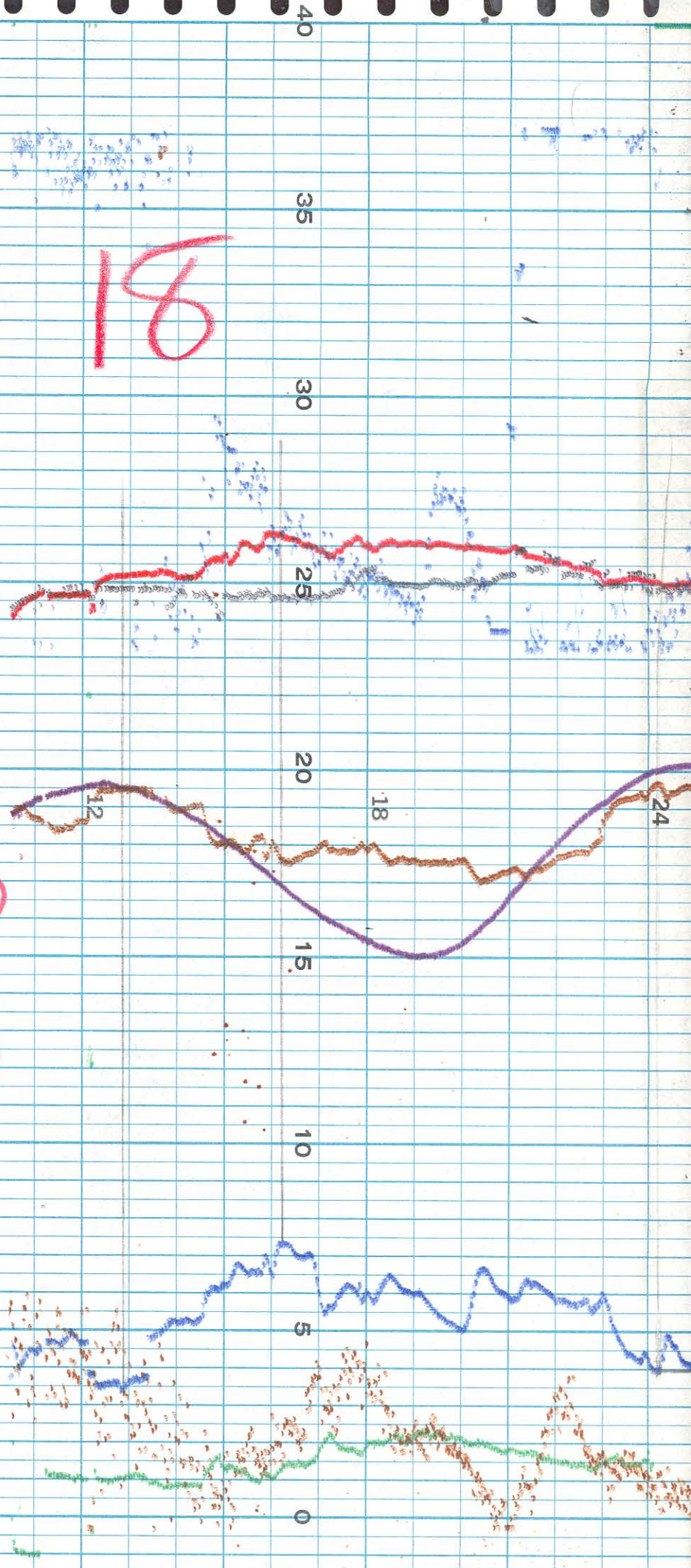
12:15 the pump went off

the pump reset motor shorting & capacitor ~~then~~ seems to be over heated mostly one of the leads possibly shorted or at least the neutral was coming off.

and come upon 400V

replaced ~~with~~ capacity





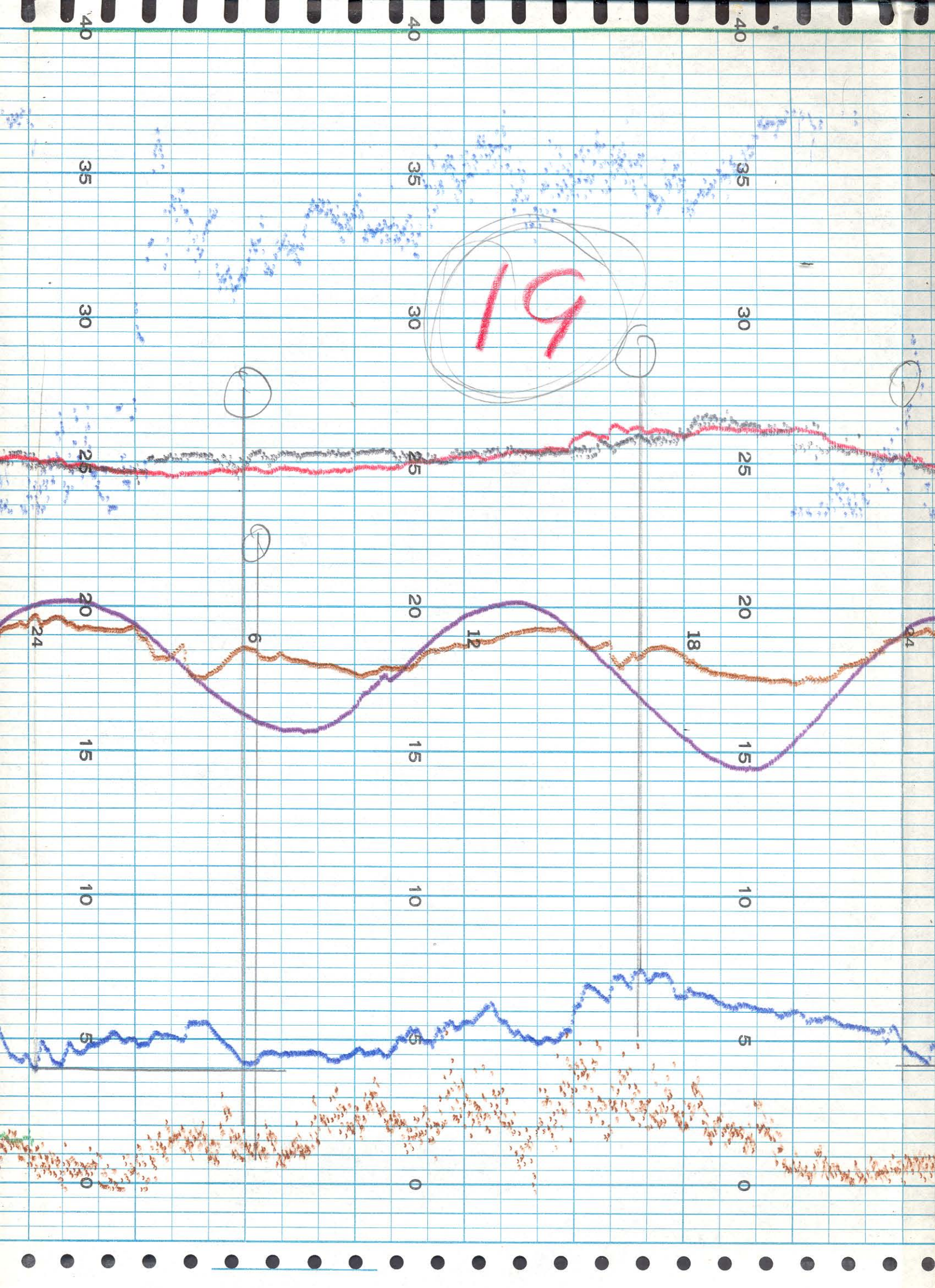
Sept. 18, 1968 @ 1030

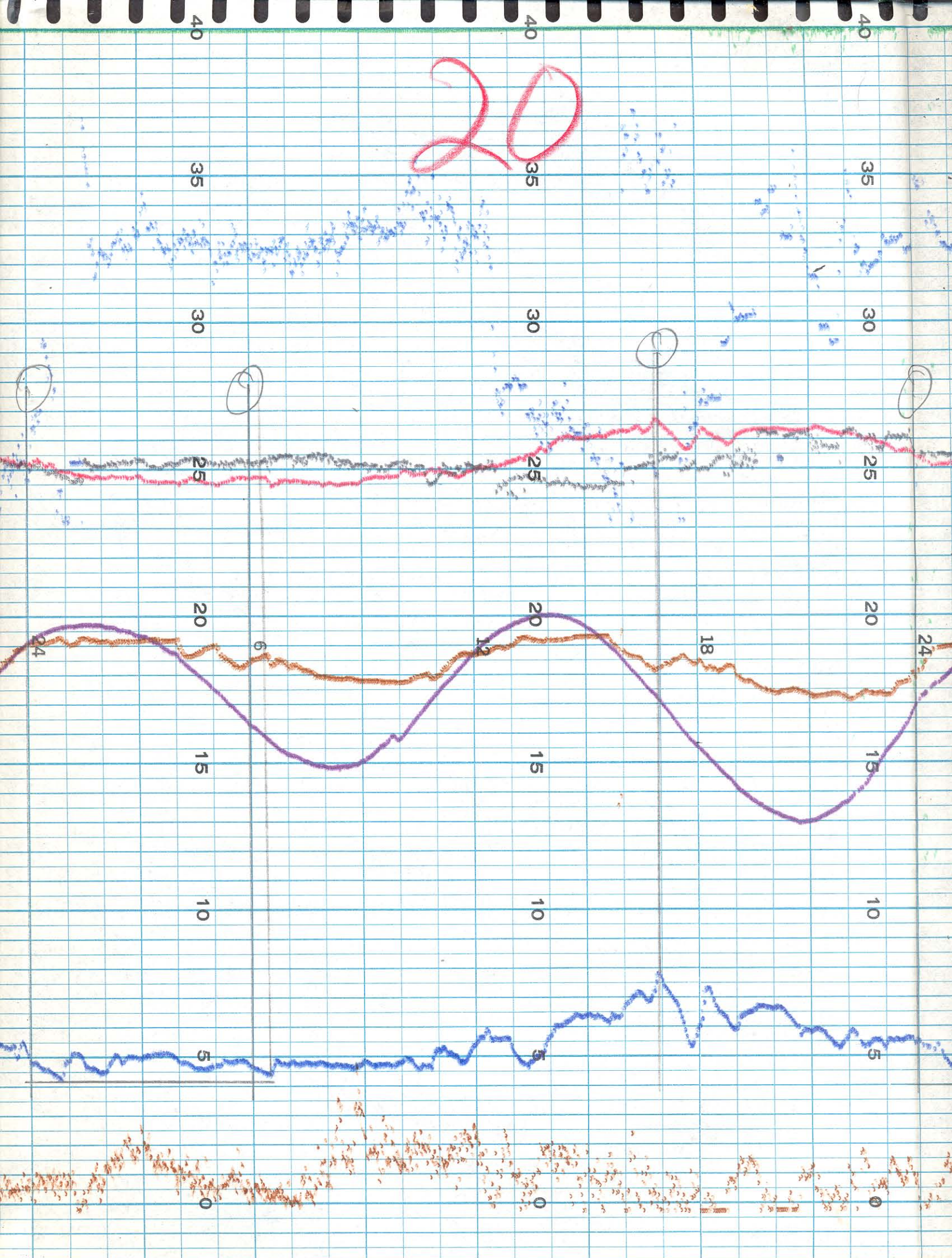
Not printing of pump P_5 Stopped

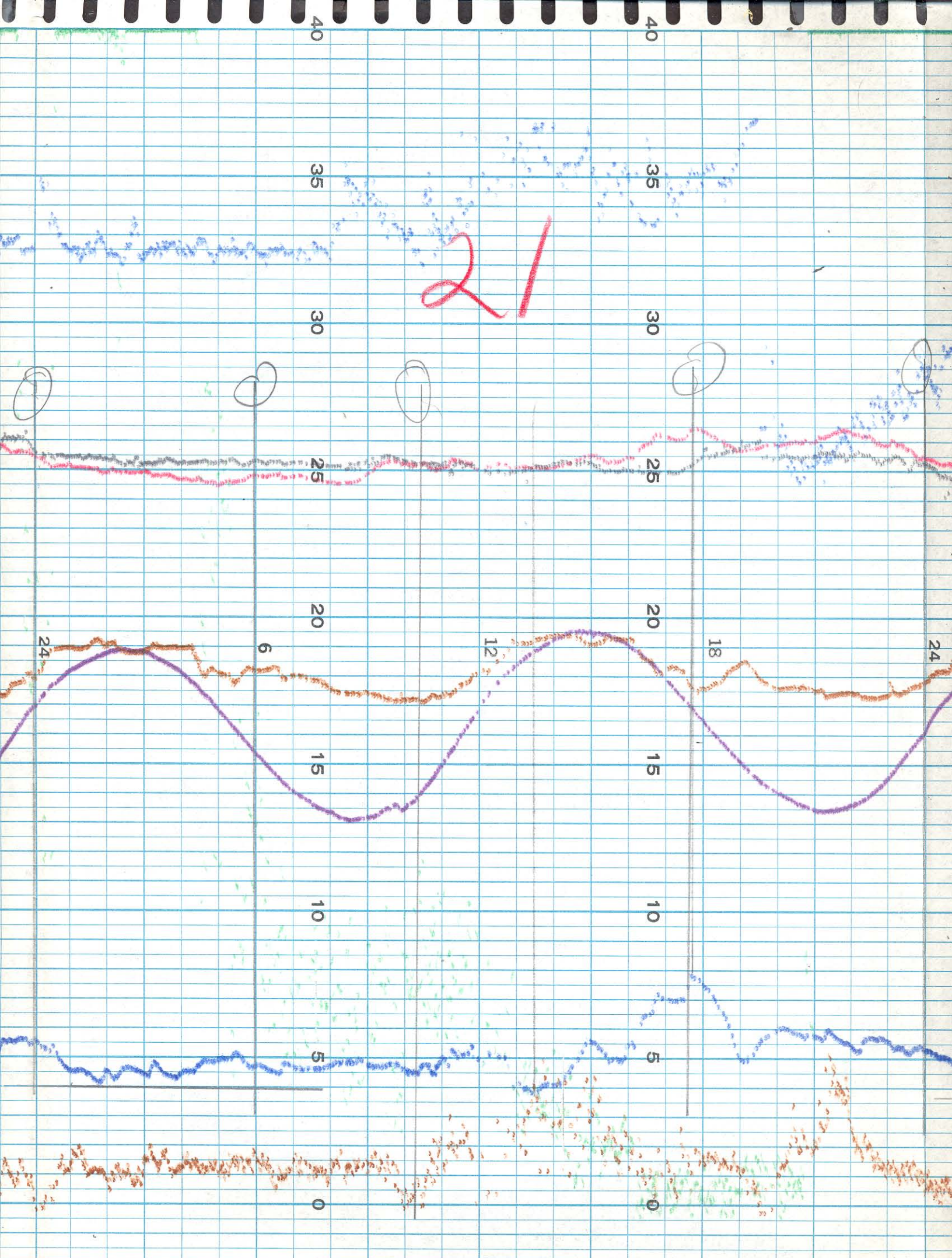
next D.D. + 1.0 ppm

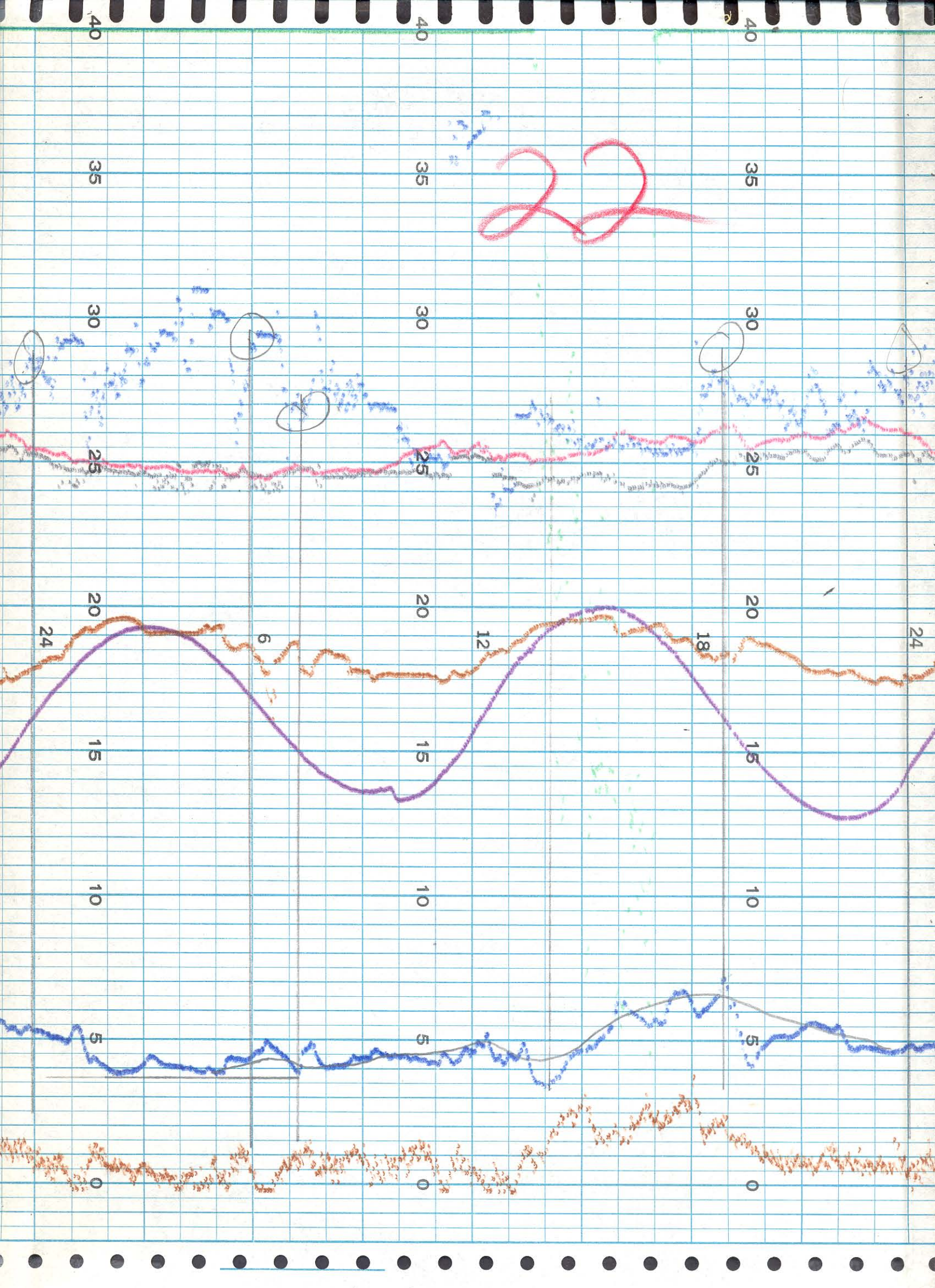
pump started after putting off. power omitted
 off and then turning power on until broken.
 All power omitted

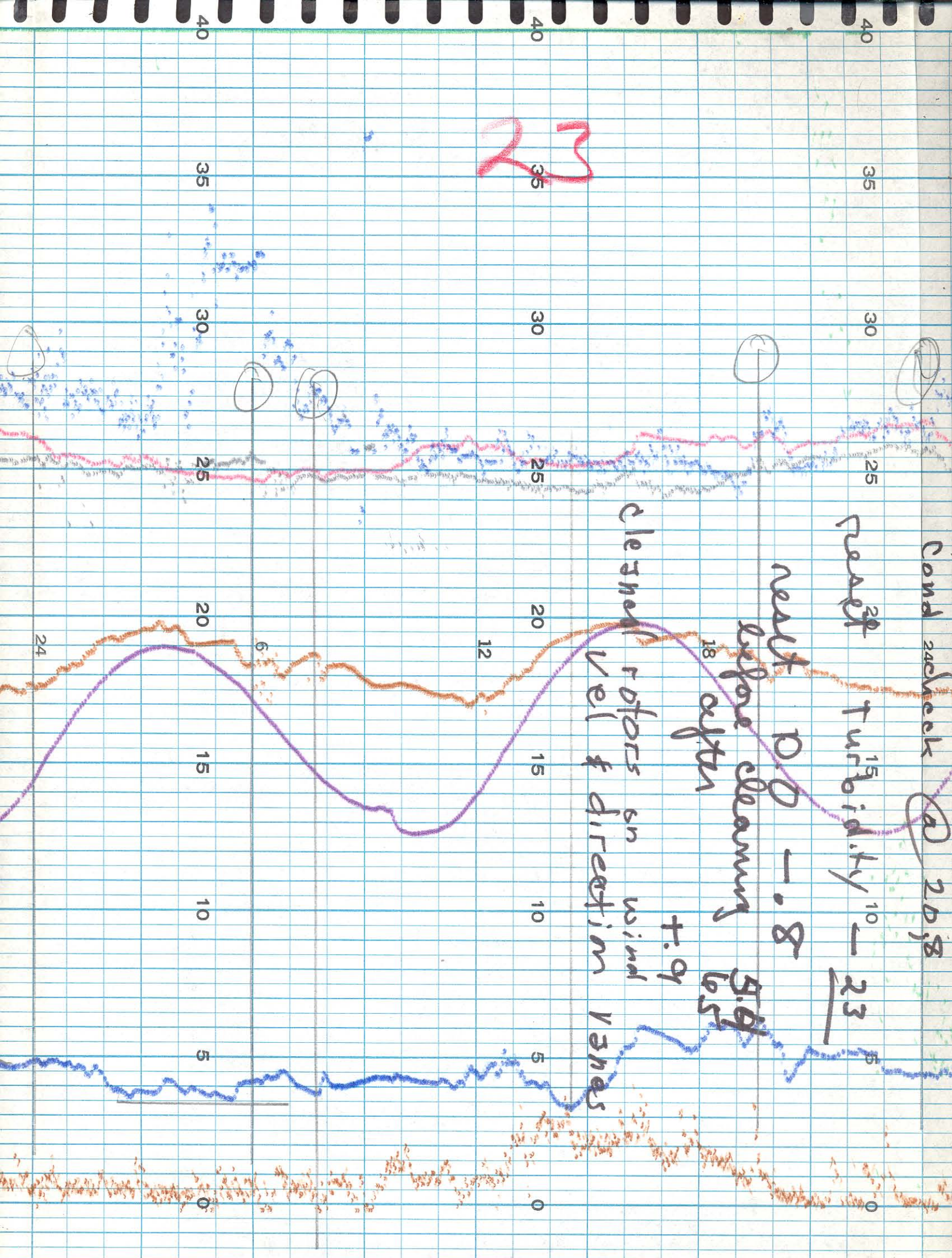
1715 the osm meter next all











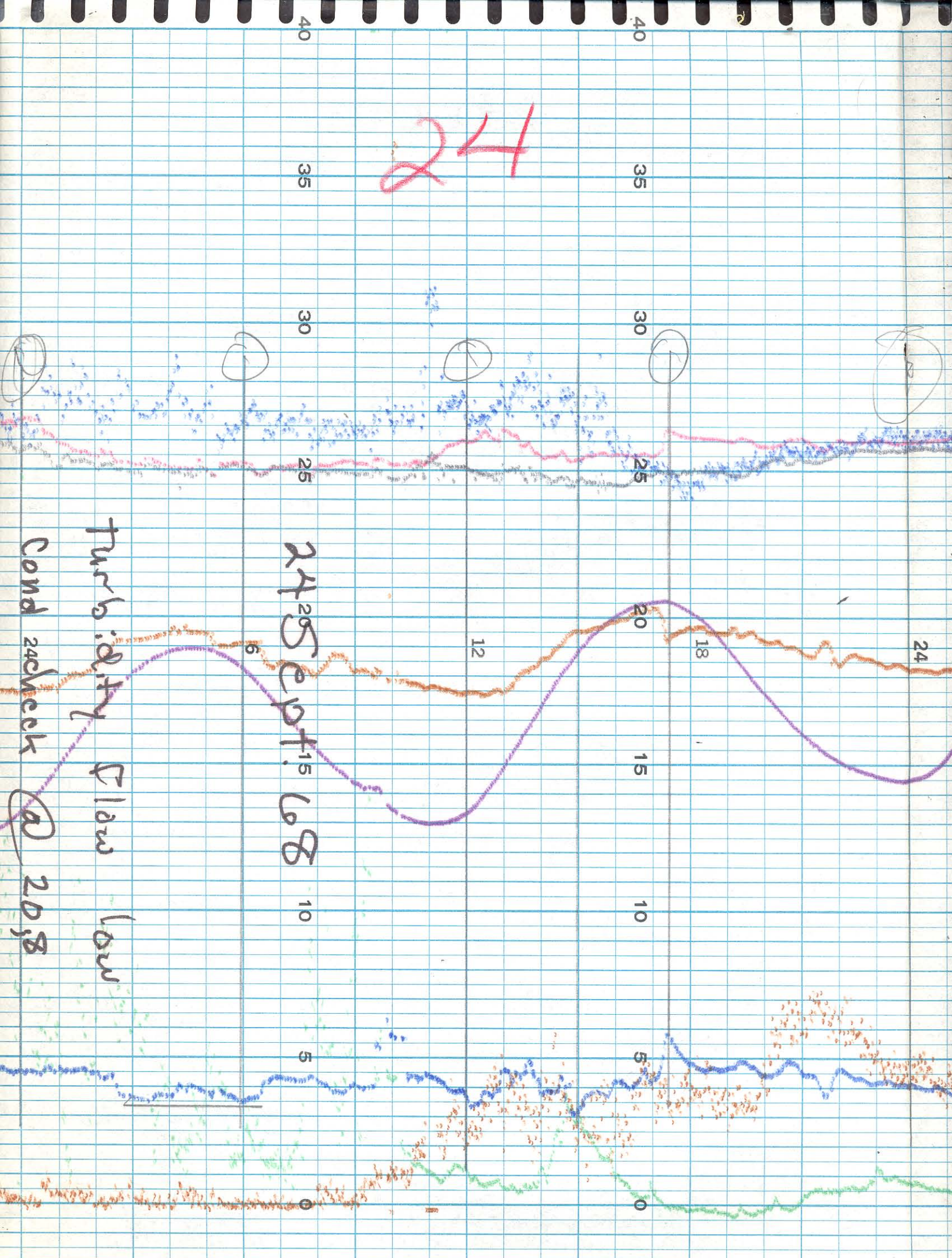
Cond 2nd check @ 20:38

rest²⁰ Turbidity¹⁰ - 23

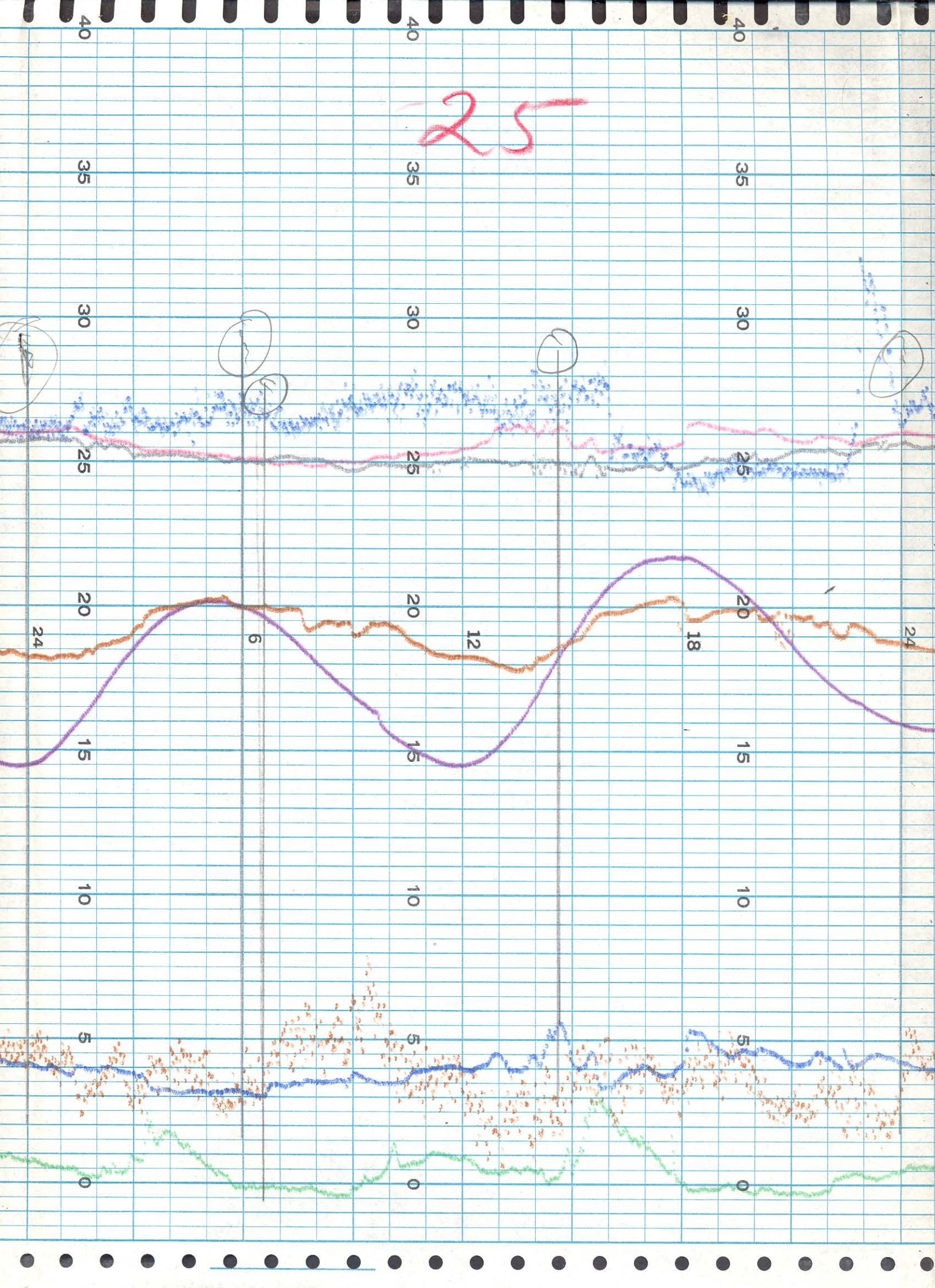
rest D.D. - .8
 before cleaning 5.4
 after 6.5
 f: 9

cleanshaft rotor on wind vanes
 vel & direction

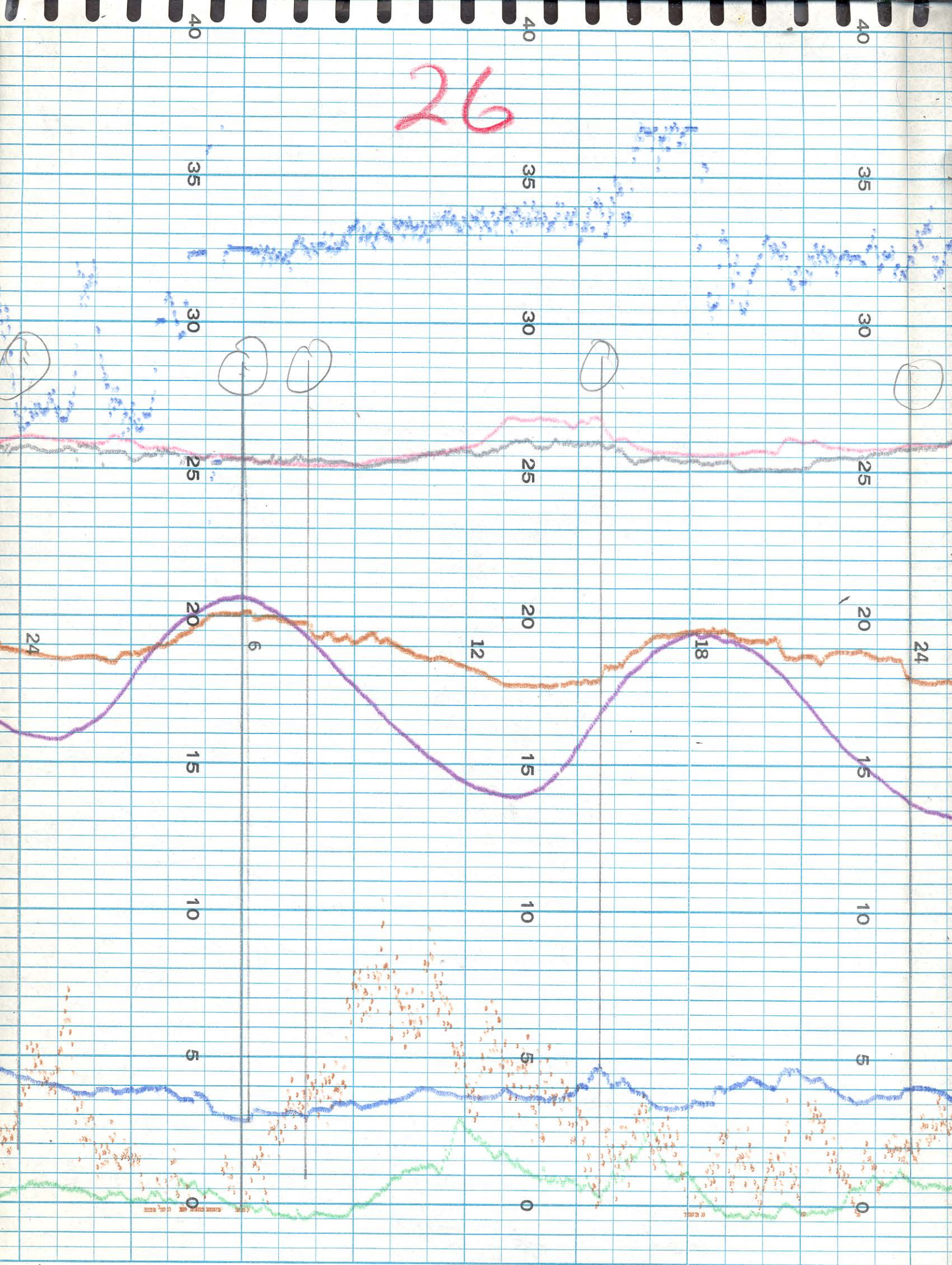
23

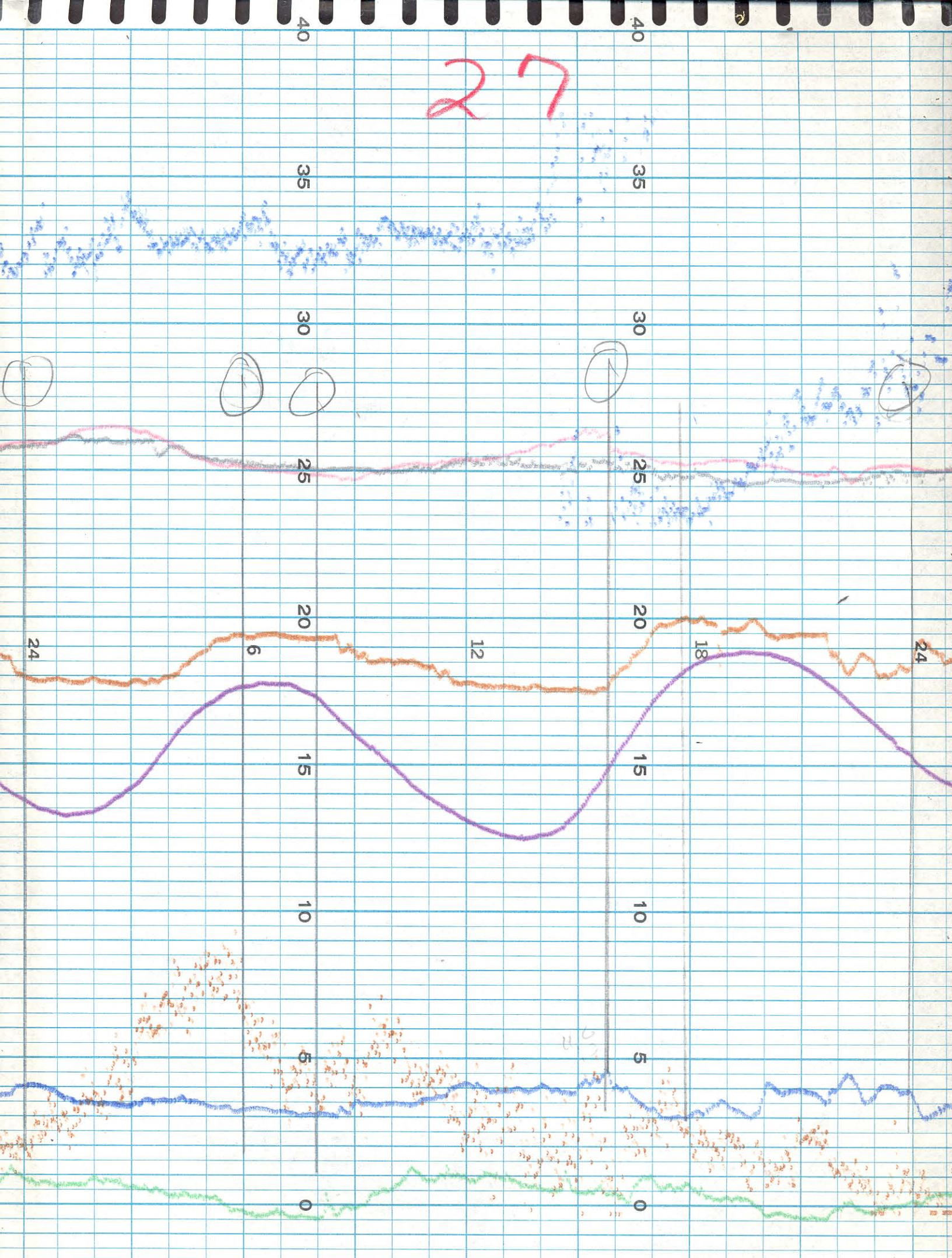


25

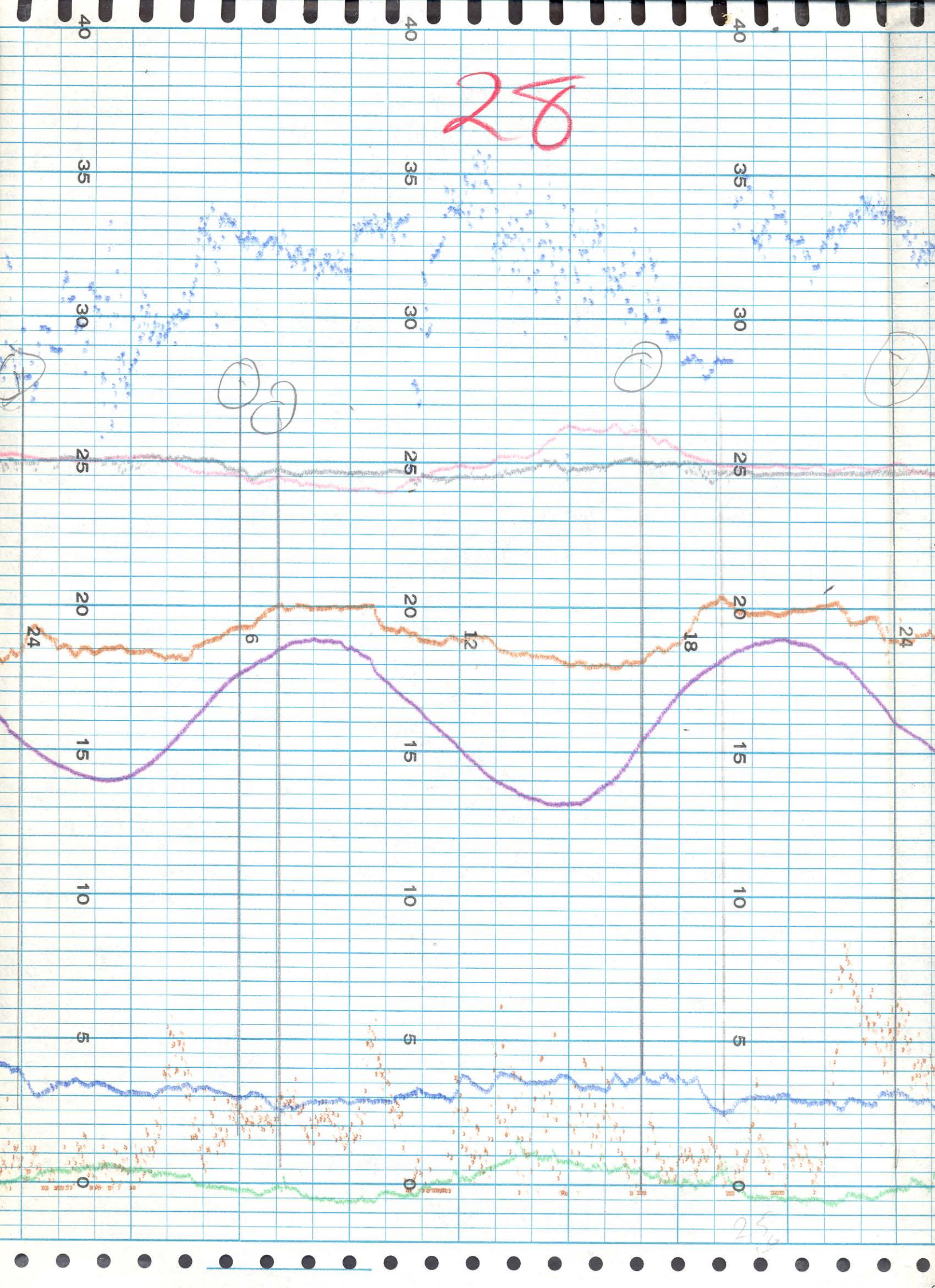


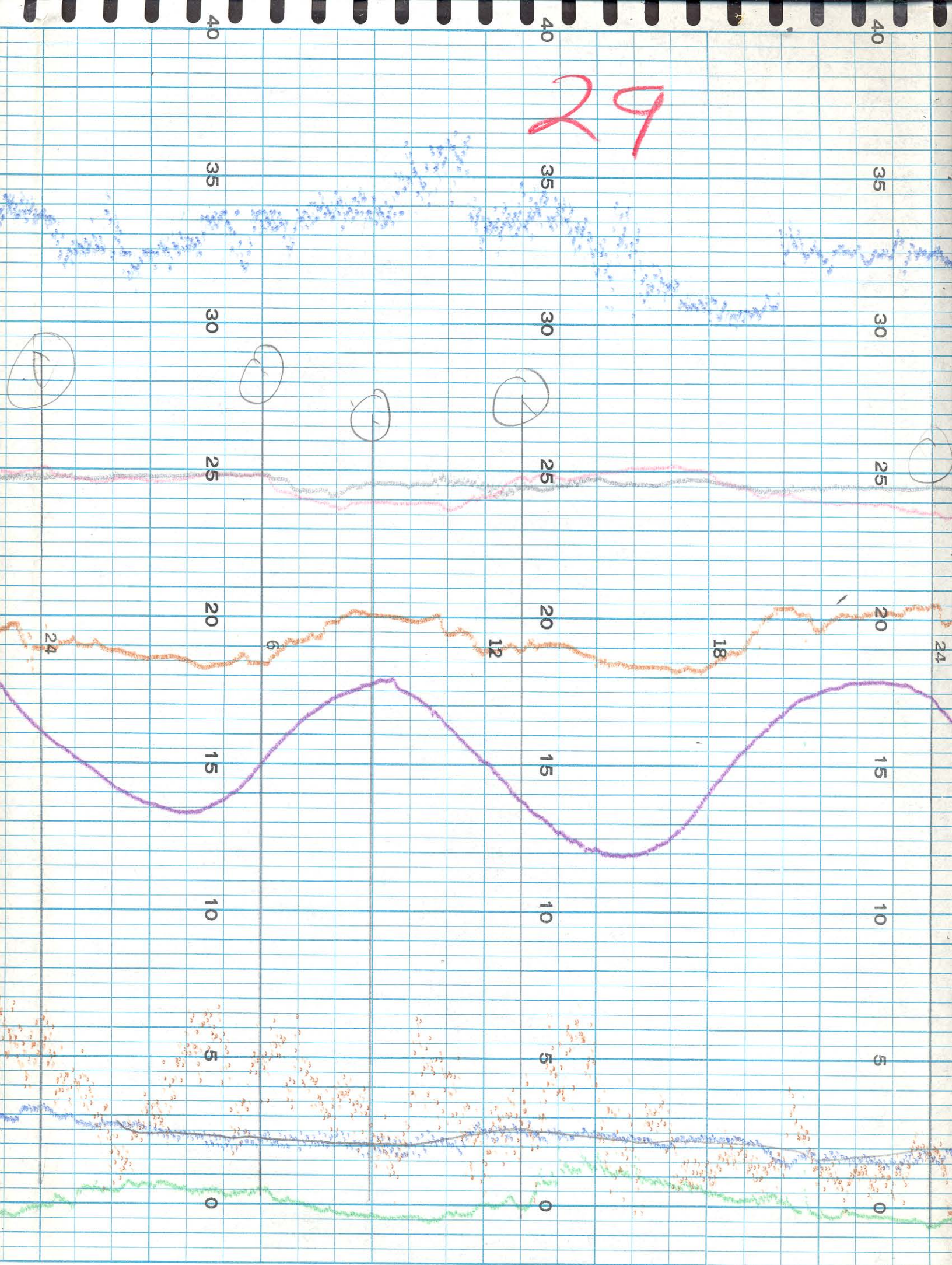
26



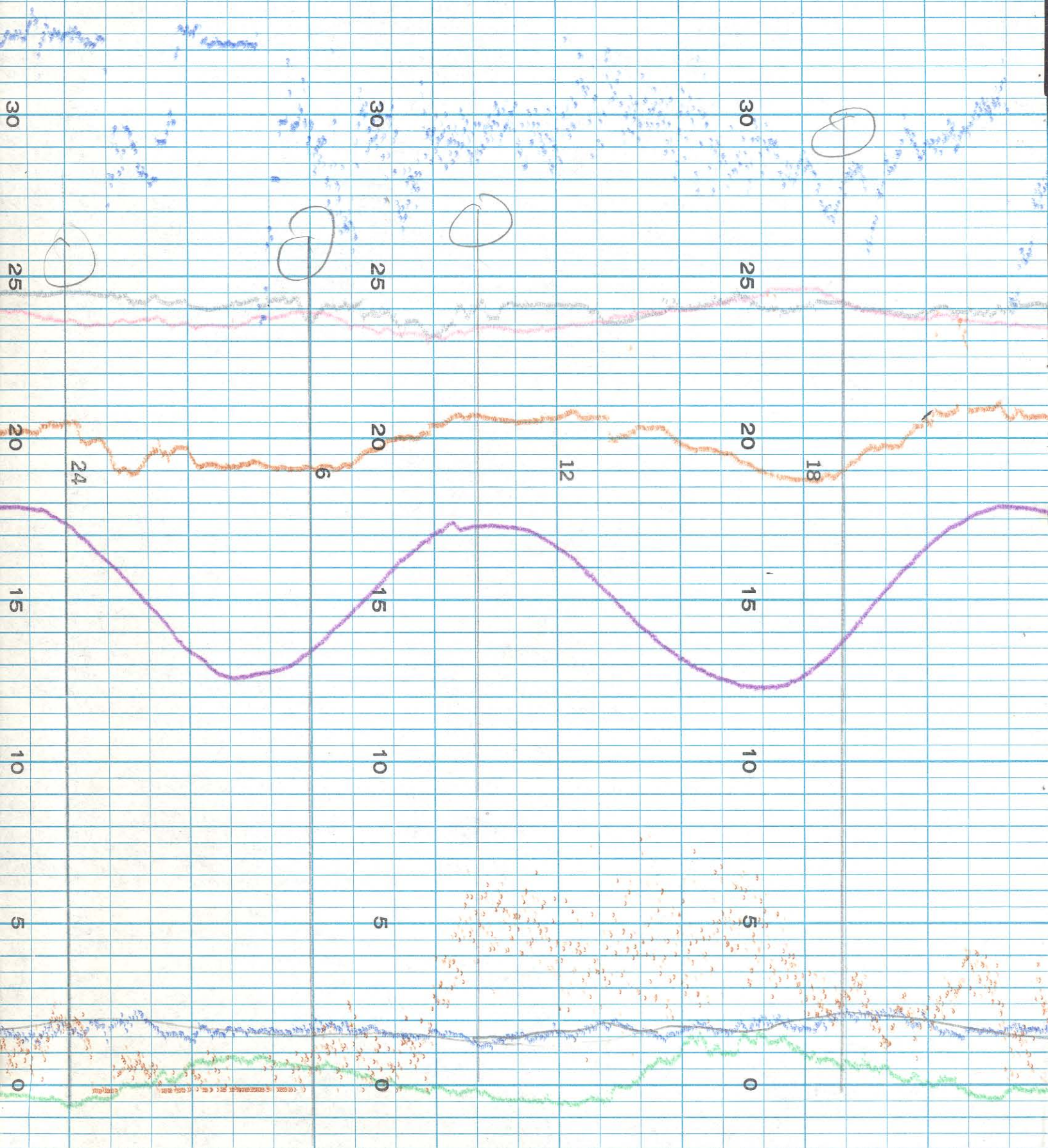


28





30 Sept. 68



Month	Day	Time	Sept. 10	Sept. 24	Oct 2
			1155	0930	0920
		chart. Temp.	24.7	25.2	23.3
		Temp.	24.7	24.8	23.0
		chart. Bottom Temp.	24.5	25.0	23.7
		Temp.			
		chart. Cond.	19.5	18.0	19.8
		9311	19.5	18.1	19.8
		Cond. Kel 35,4	36.5	36.0	36.8
		chart. Dissolved Oxygen	6.5	4.0	2.4
			3.7	5.4	4.5
			4.7	5.7	4.9
		Winkler	6.1	4.5	5.0
			4.7	4.5	
		Turb. chart.	12	45	2
		Well log	12	27	11
		Tide chart	-0.1	+0.2	+0.5
		Staff	+1.9	+1.9	+1.9
		Wind chart	E	SE	SE
		Dir.	SE	SE	S
		Wind Vel. chart	4	1.5	1.0
		Vel	5	3.0	3

record all parameters except wind direction & velocity

marks

7- Pump
 8- B.
 1- 211
 2- 211
 7- 211

Pump off. Capillary
 now dead, replaced
 Next P.O. +1.0
 GC

Turb. Flow low
 Next turb -2.0
 P.O. -1.8
 cleaned wires
 next tide notes

17.5
 17.6
 Next Turbid
 + 4.0
 Next Cont
 - 800

P.O. flow low
 P.O. next +4.0
 Temp 3.9 high

next 19.0