

B

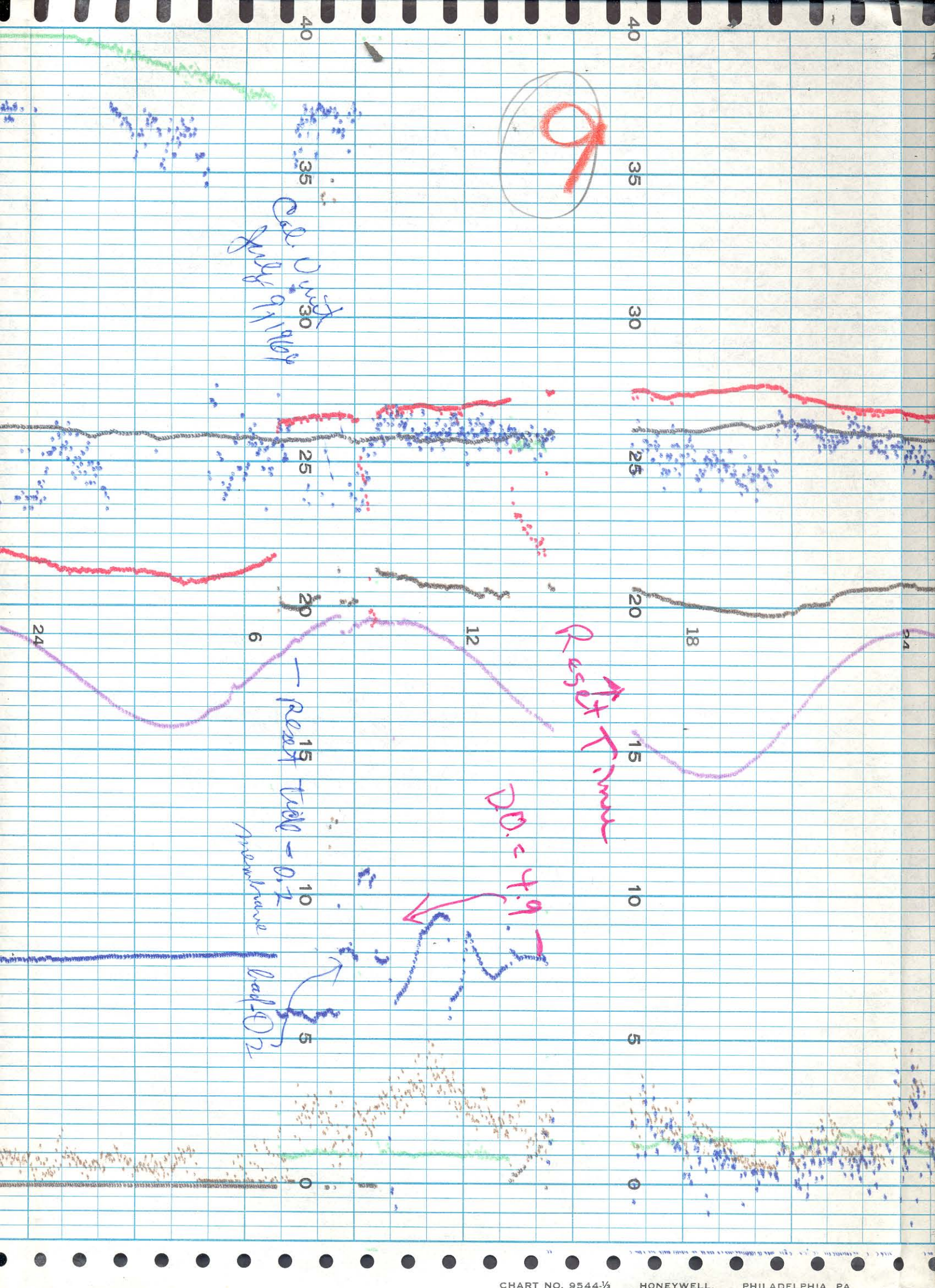
24

6

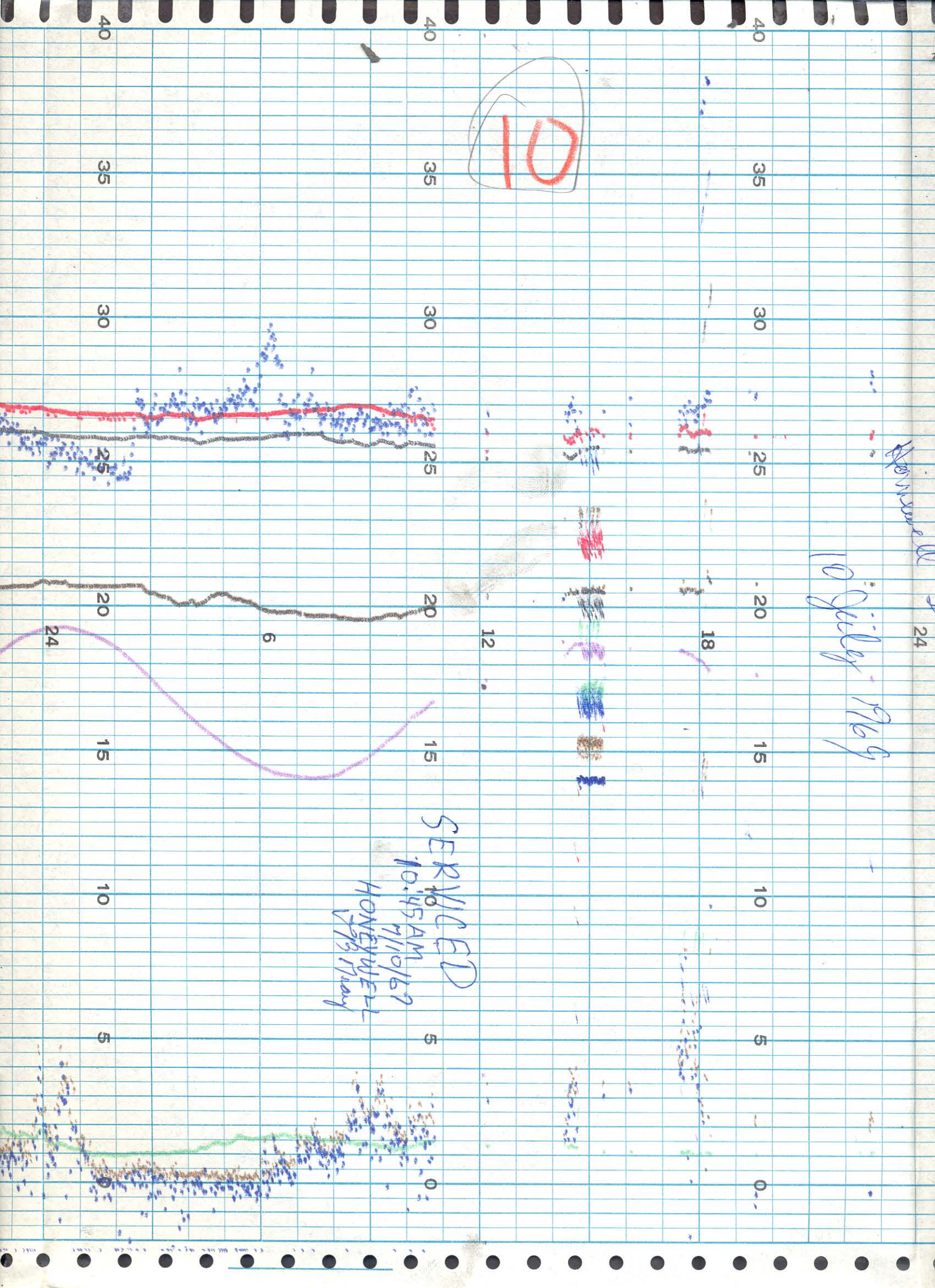
12

18

24



Honeywell
10 July 1969



SERIALIZED
10:45 AM
7/10/69
HONEYWELL
1969 Honey

24

20

15

10

5

20

15

10

5

0

20

15

10

5

0

25

12

6

5

0

25

18

6

5

0

25

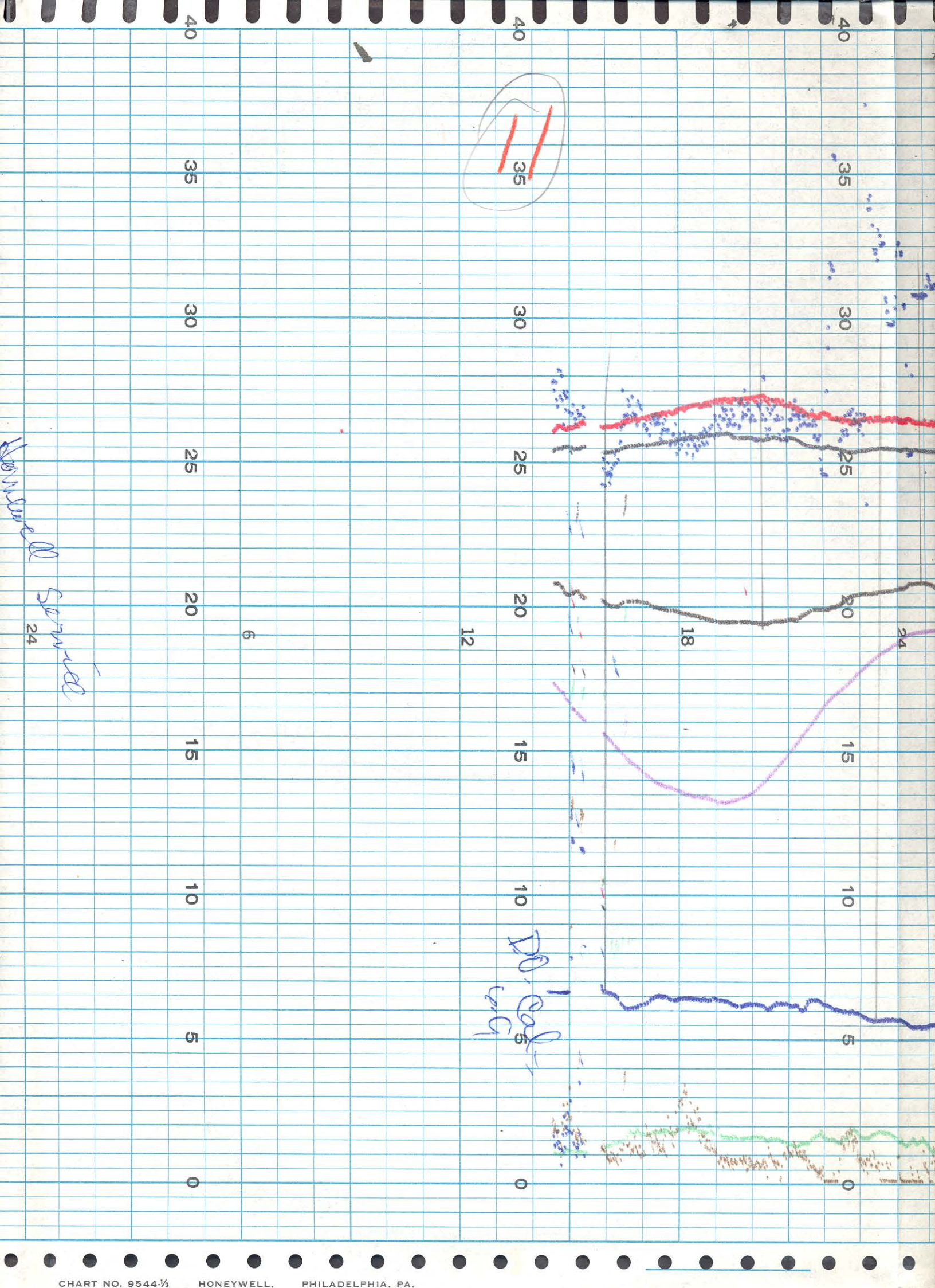
24

6

5

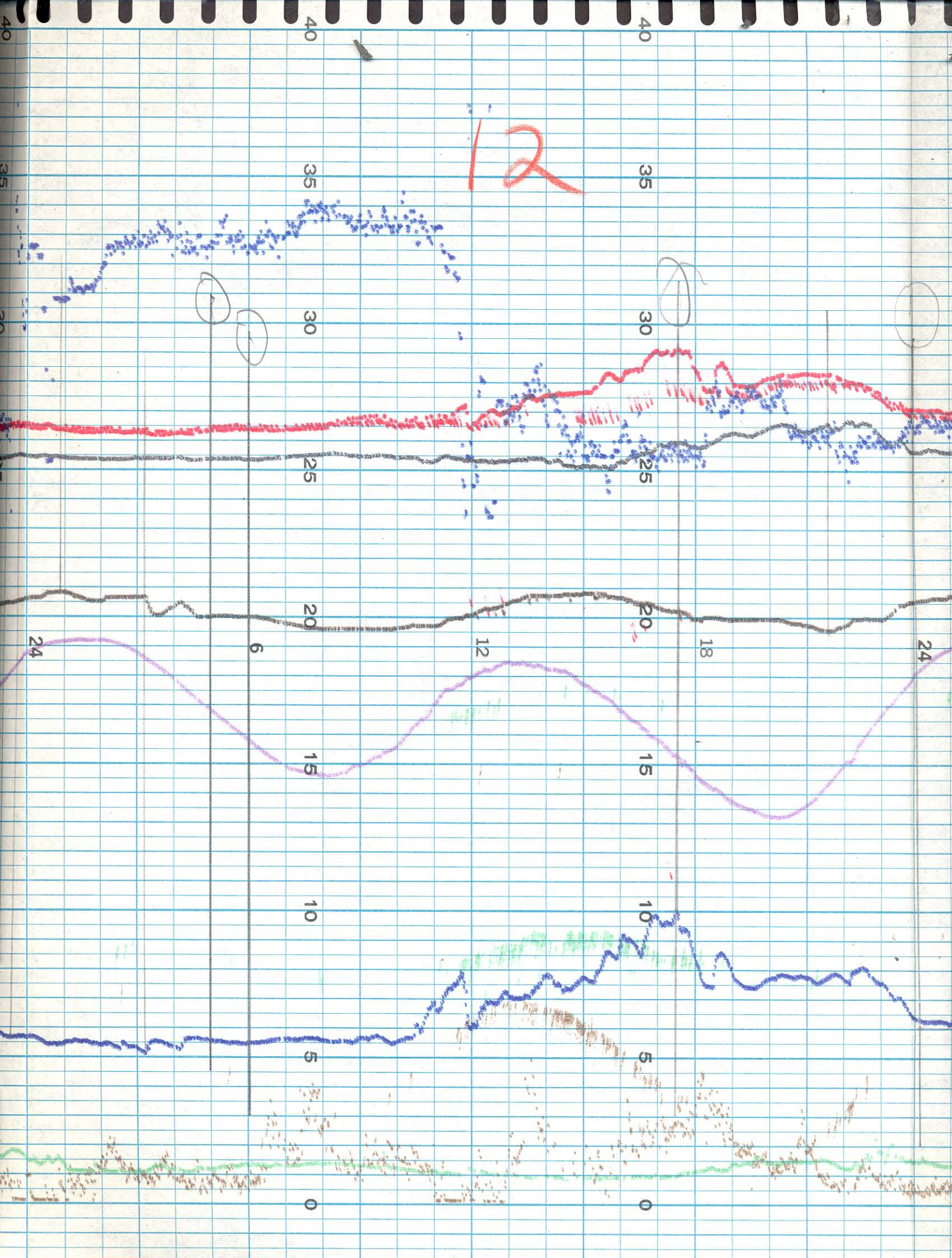
0

D

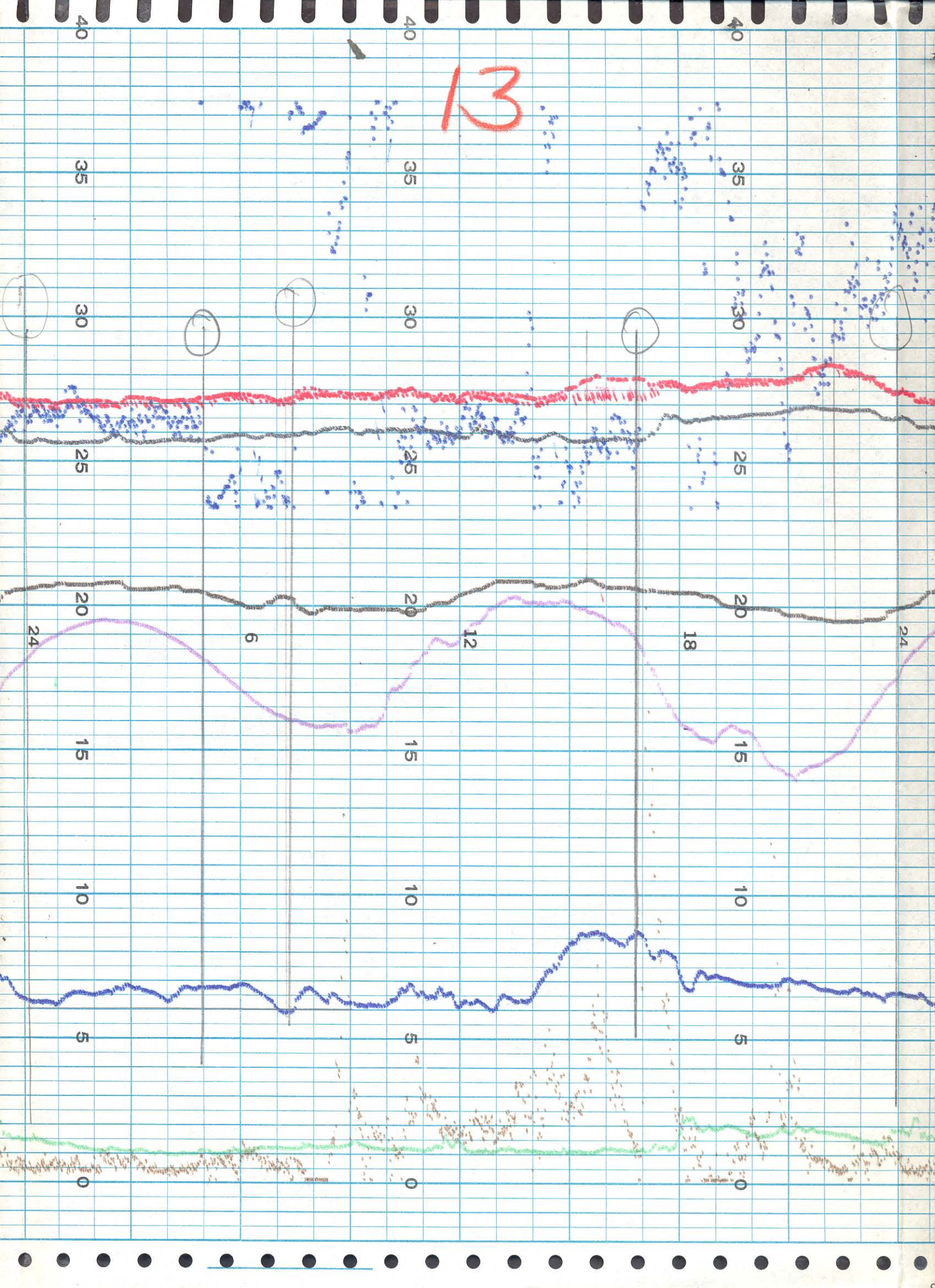


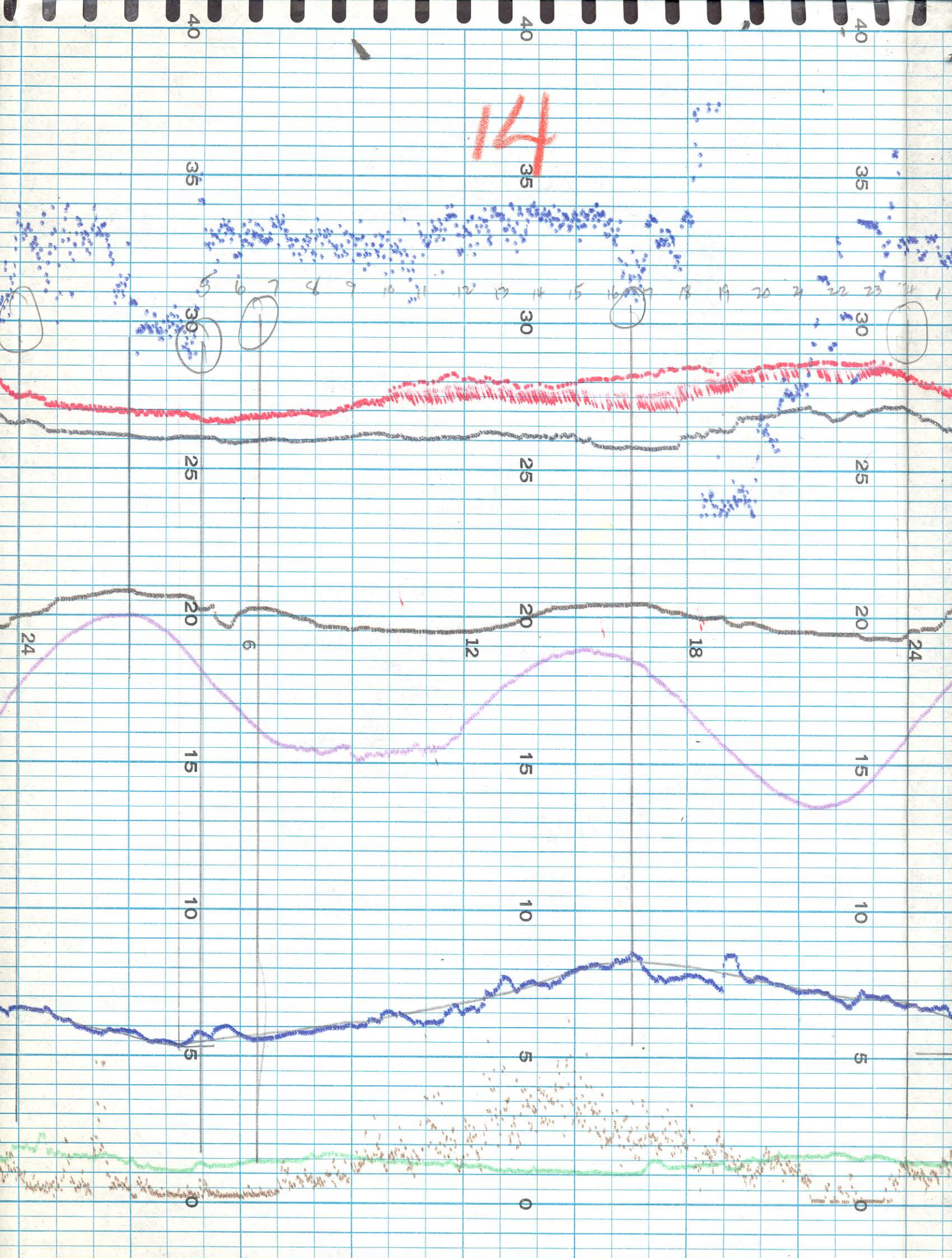
Honeywell Service
24

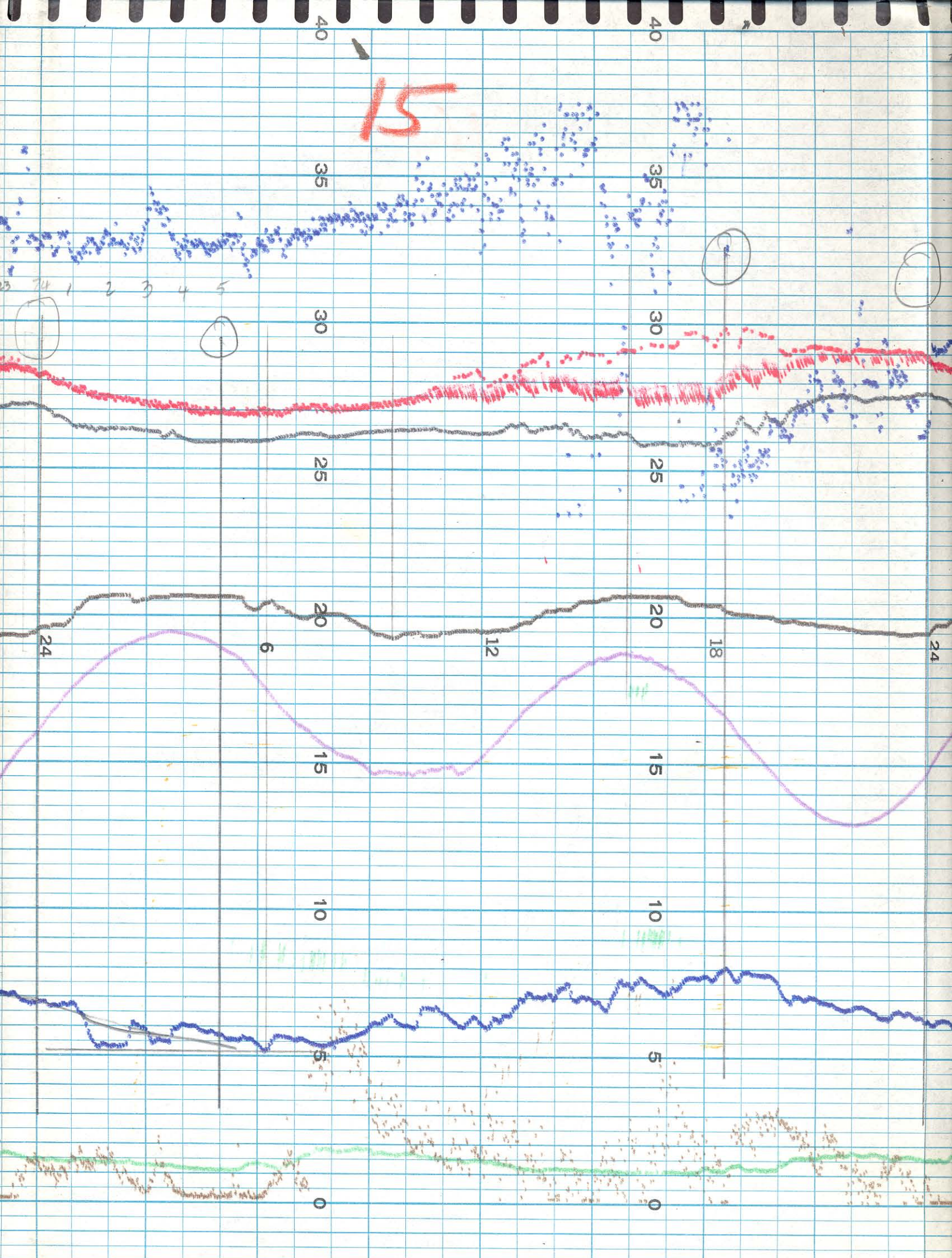
D. Col

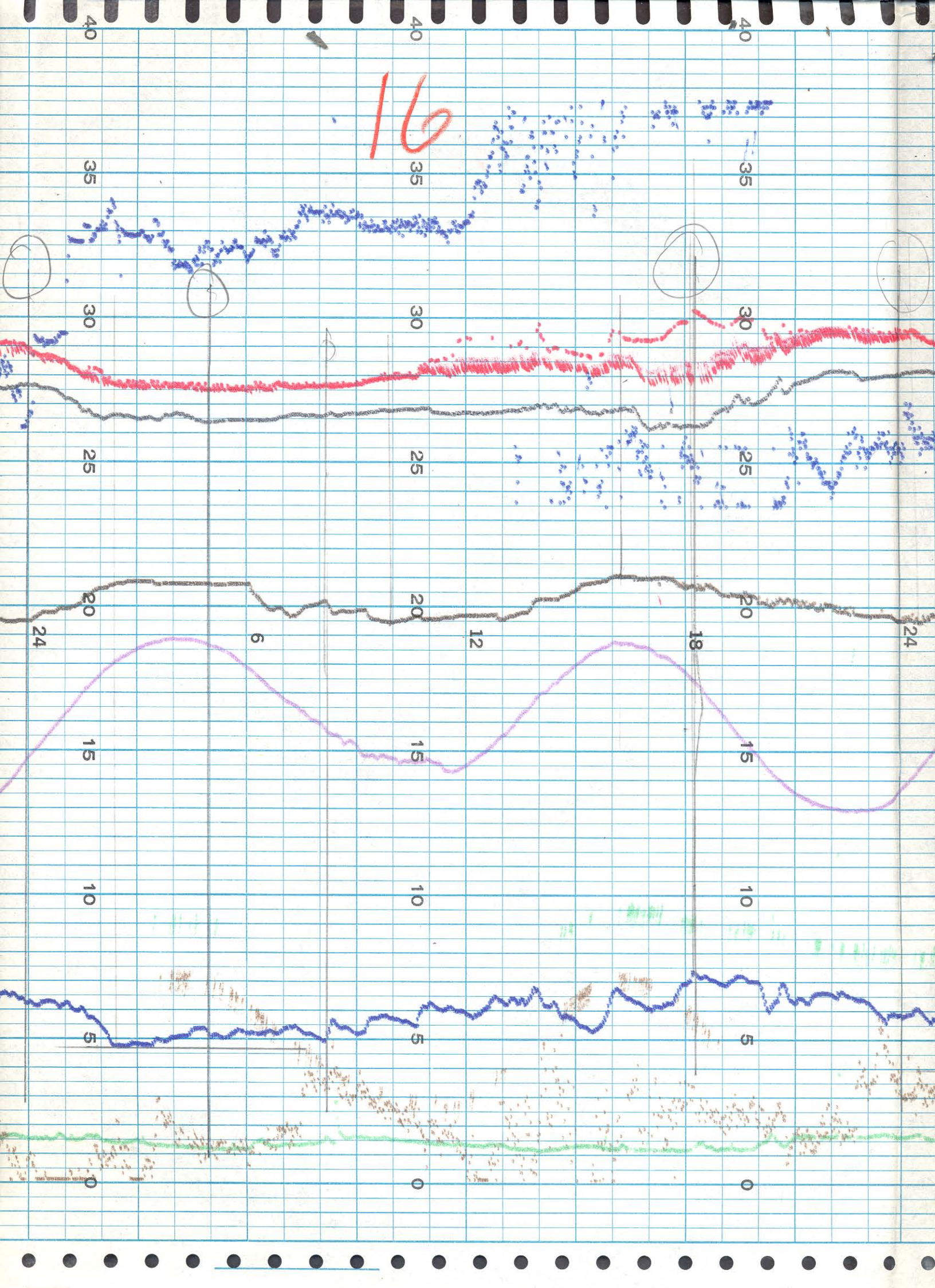


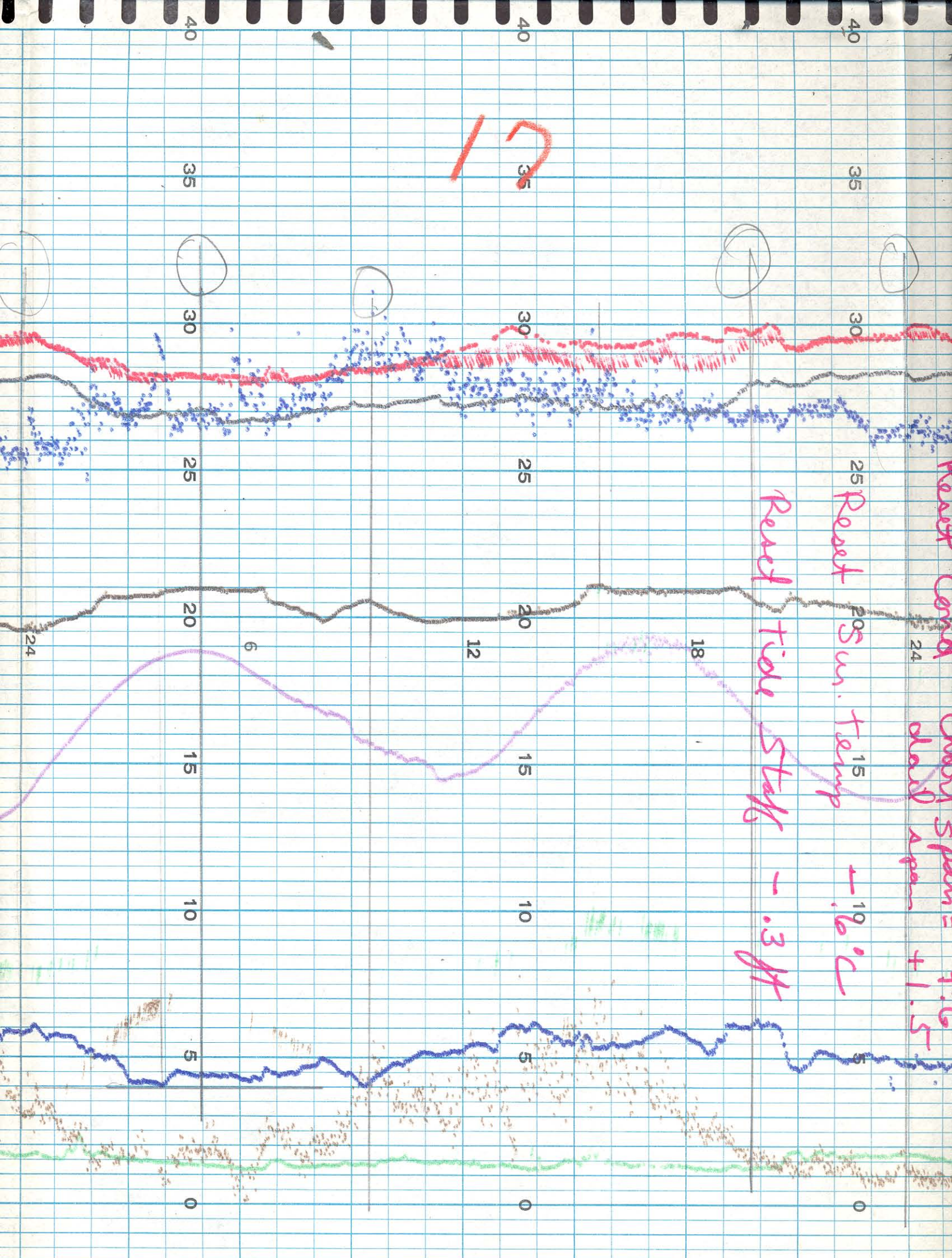
13

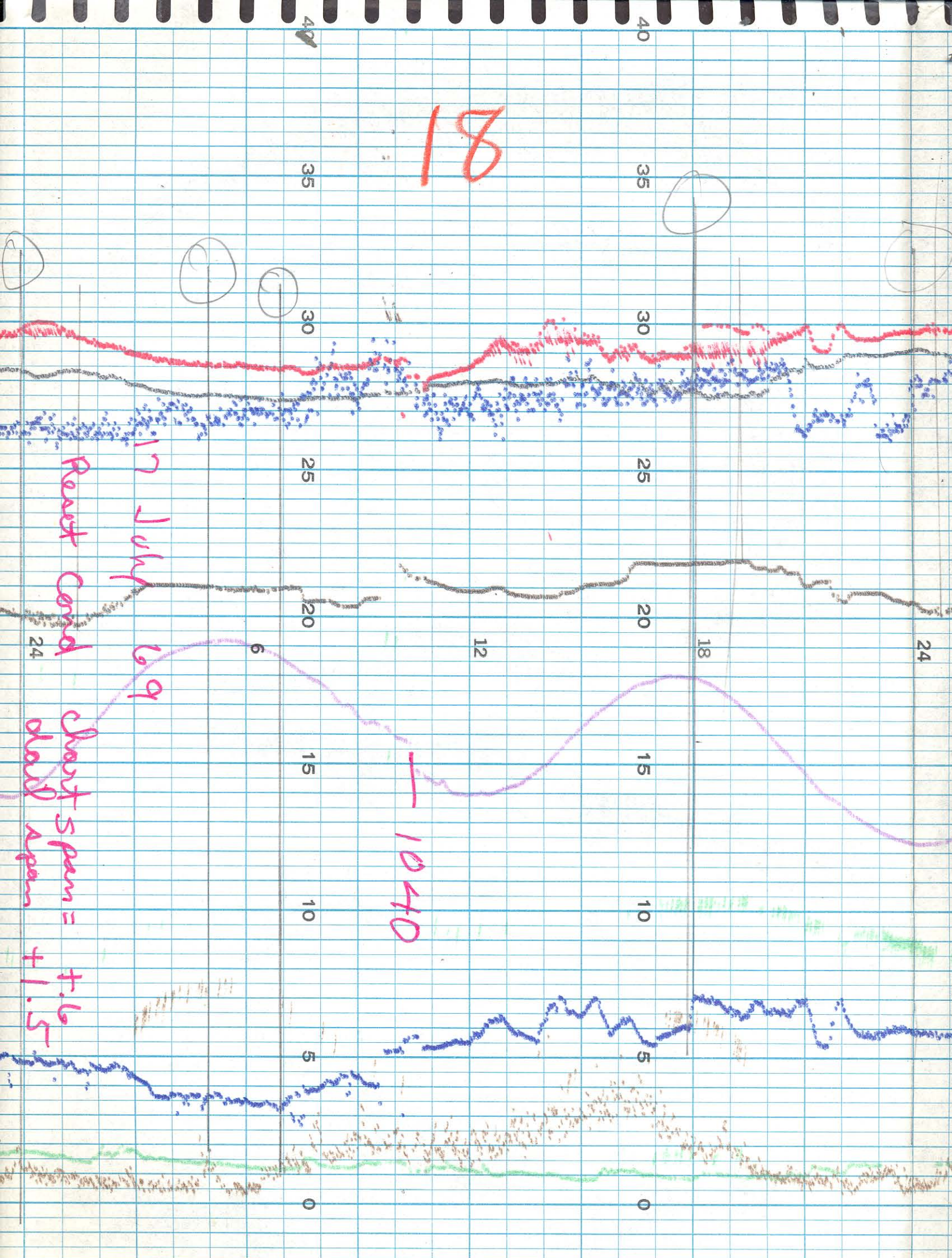












81

17 July

Reset Cond

short span = +1.6
+1.5

1040

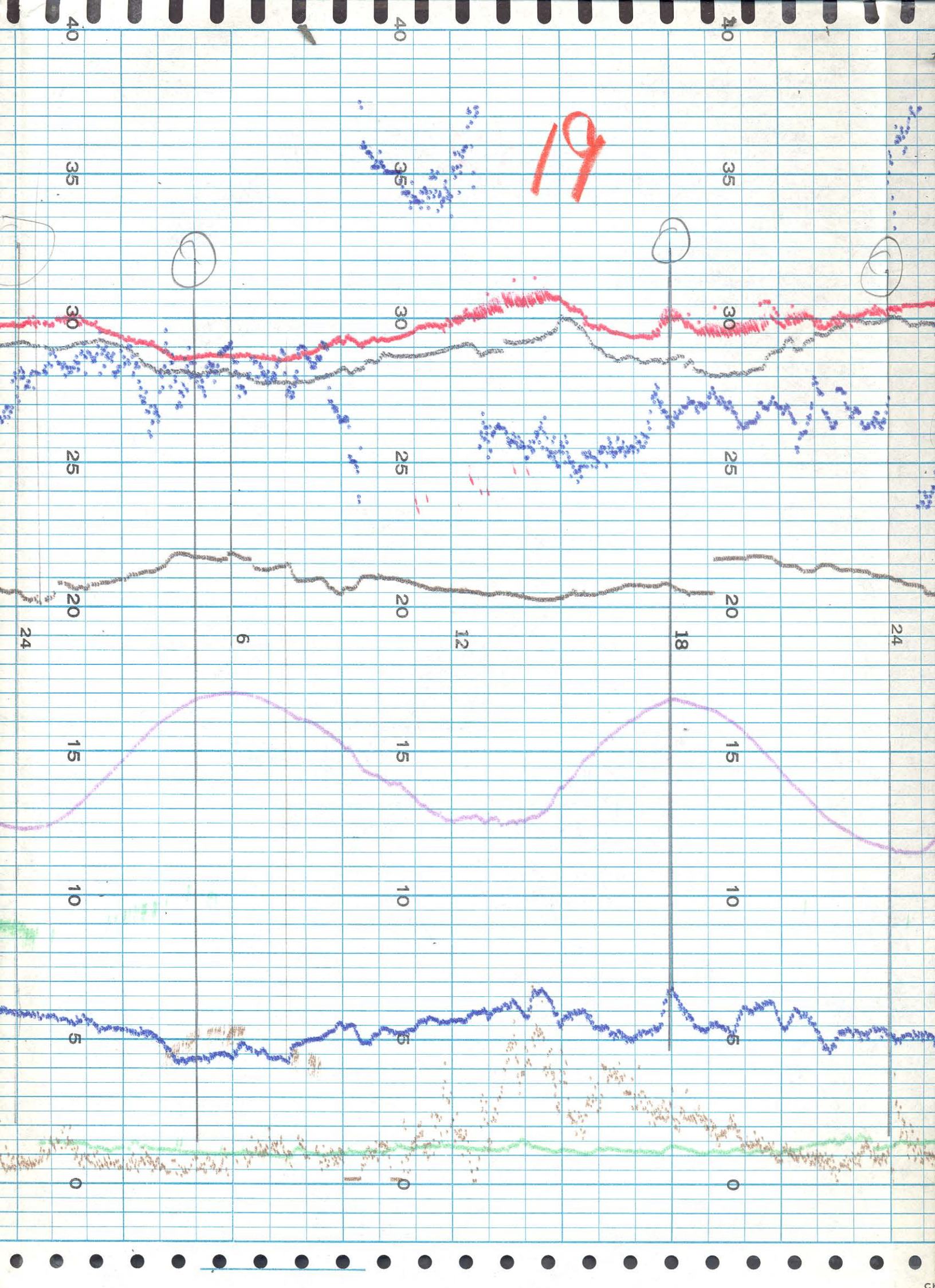
24

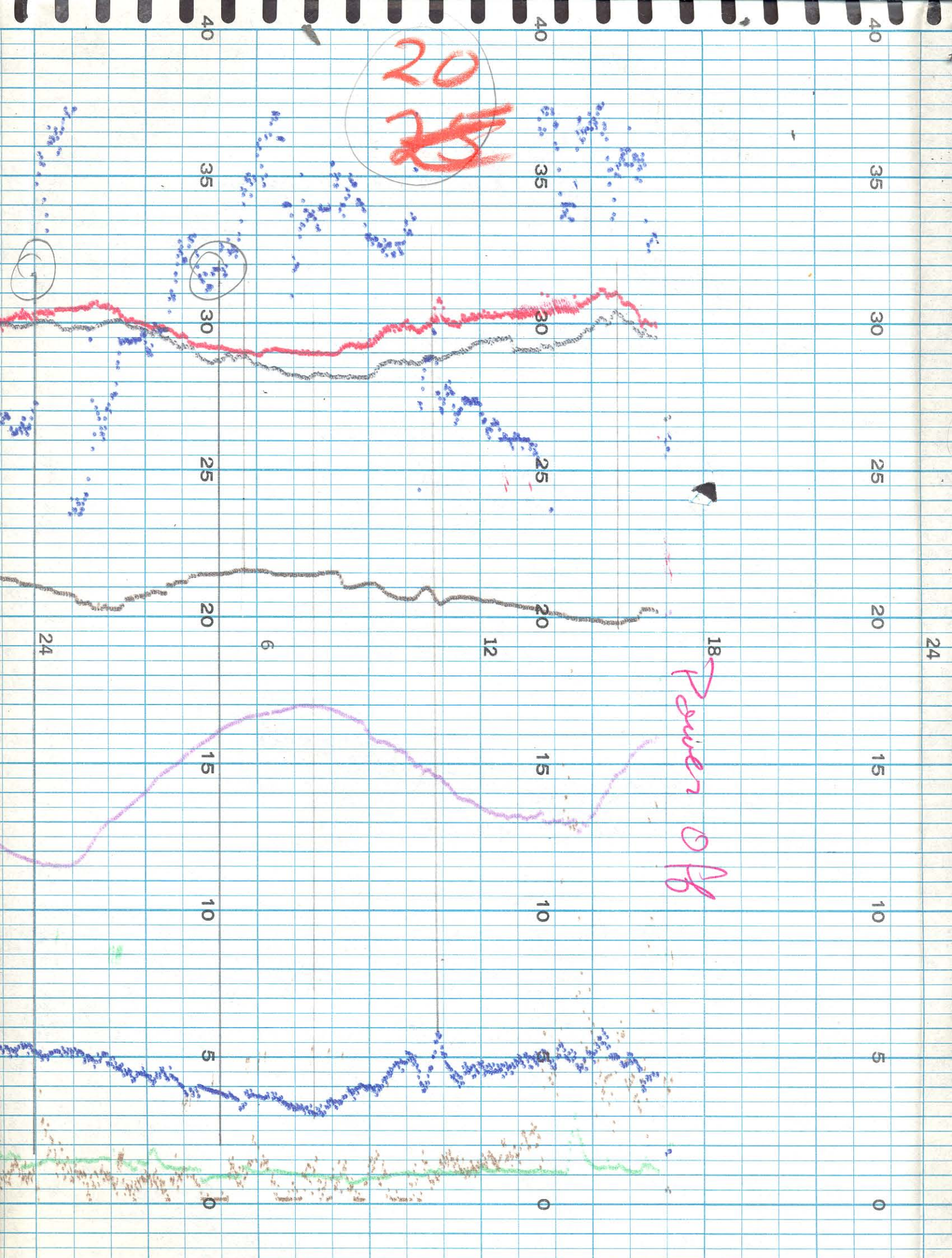
6

12

18

24





20
~~20~~

18
 Power of A

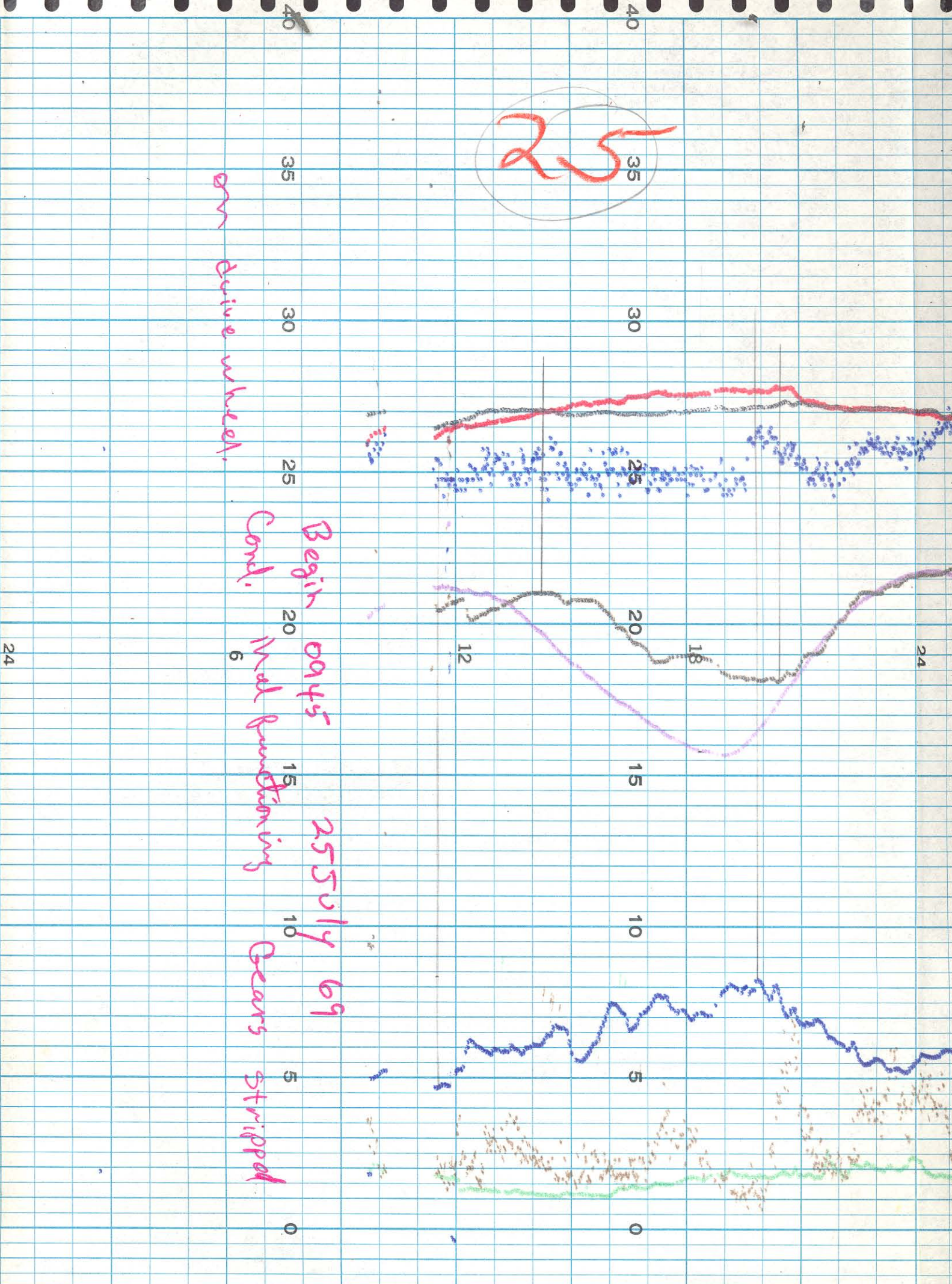
July 21 – 24, 1969

No Data.

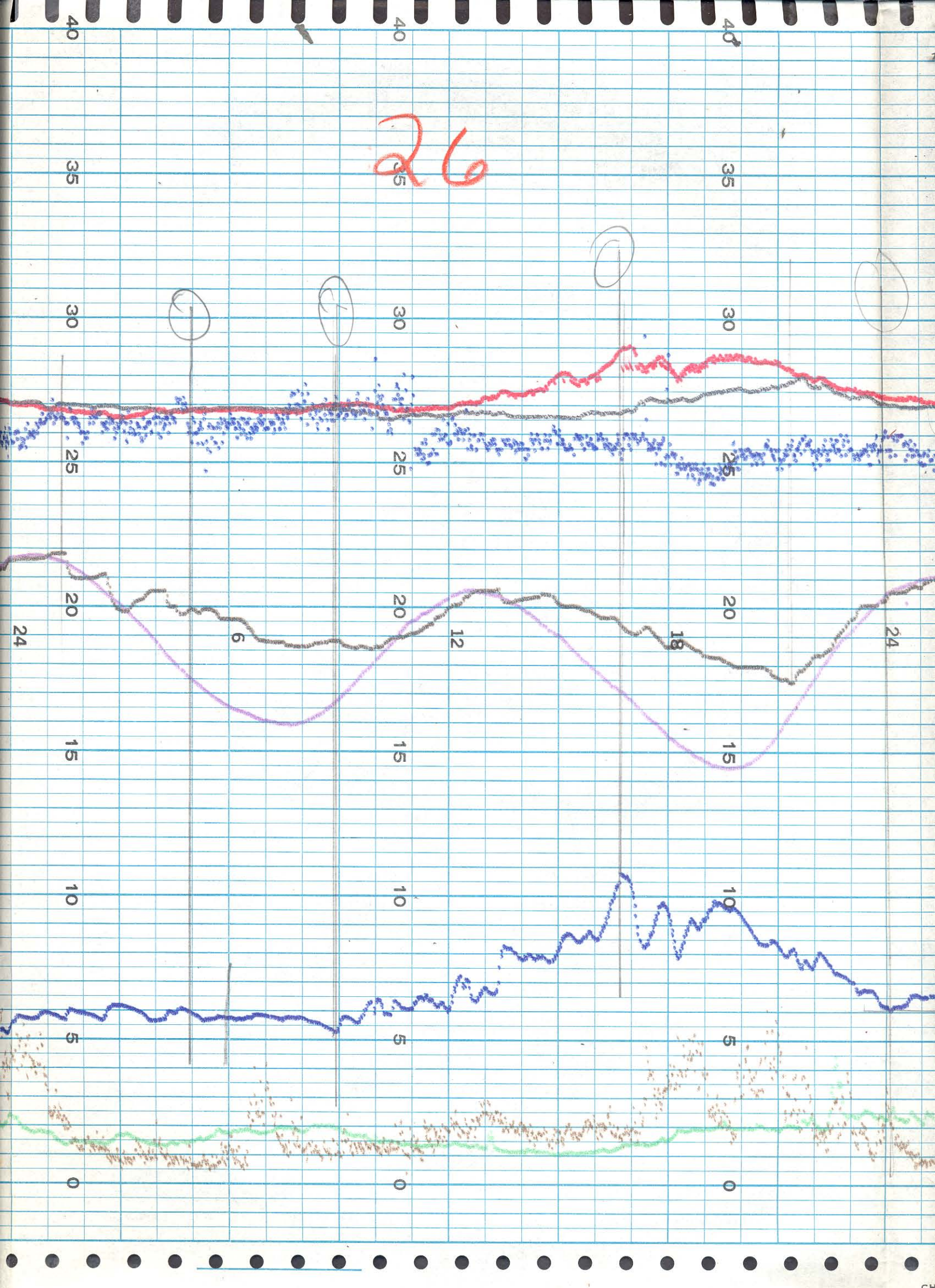
on drive wheel.

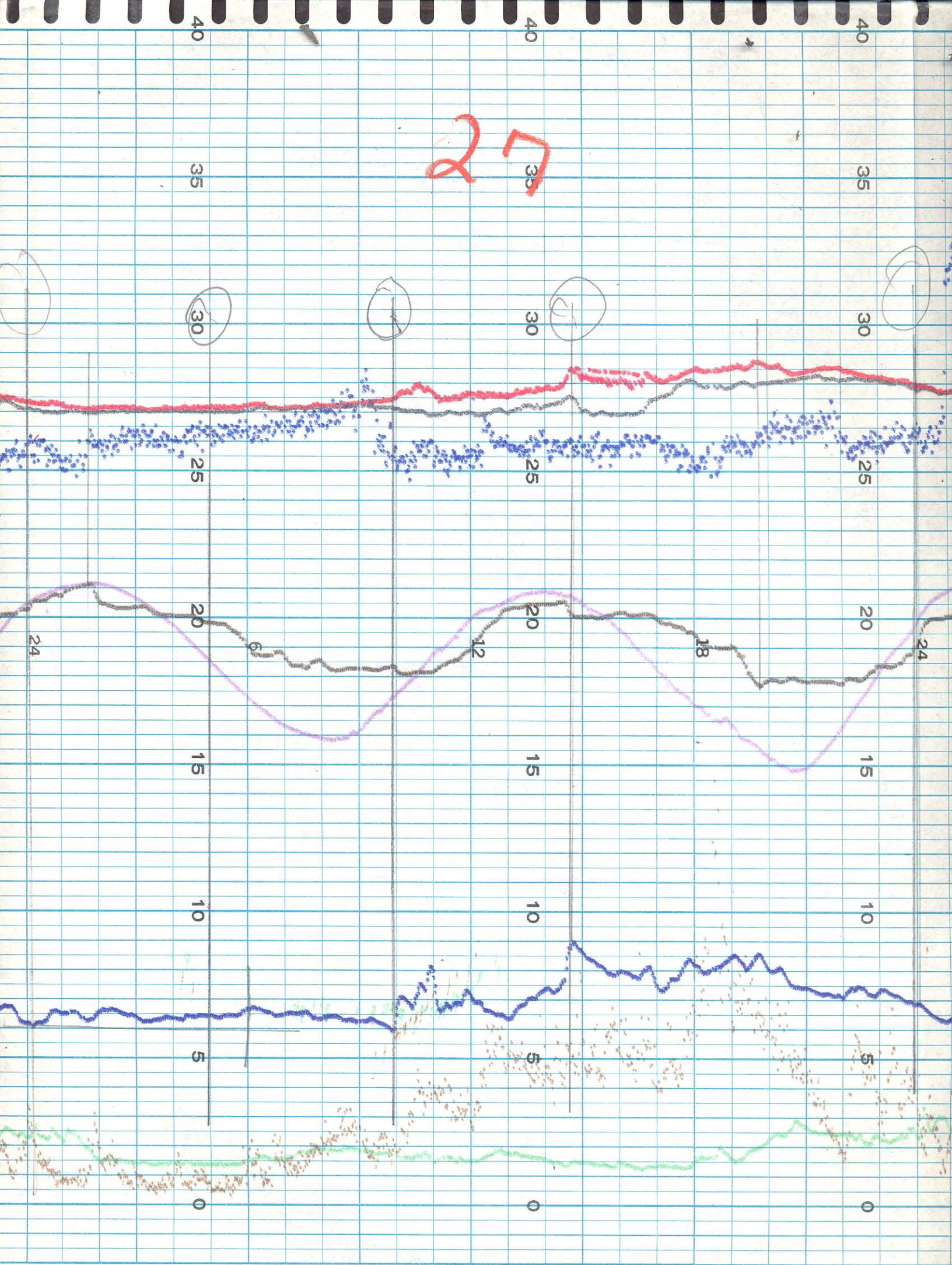
Begin days 25 July 69
Cond. Mod functioning
Gears stripped

25

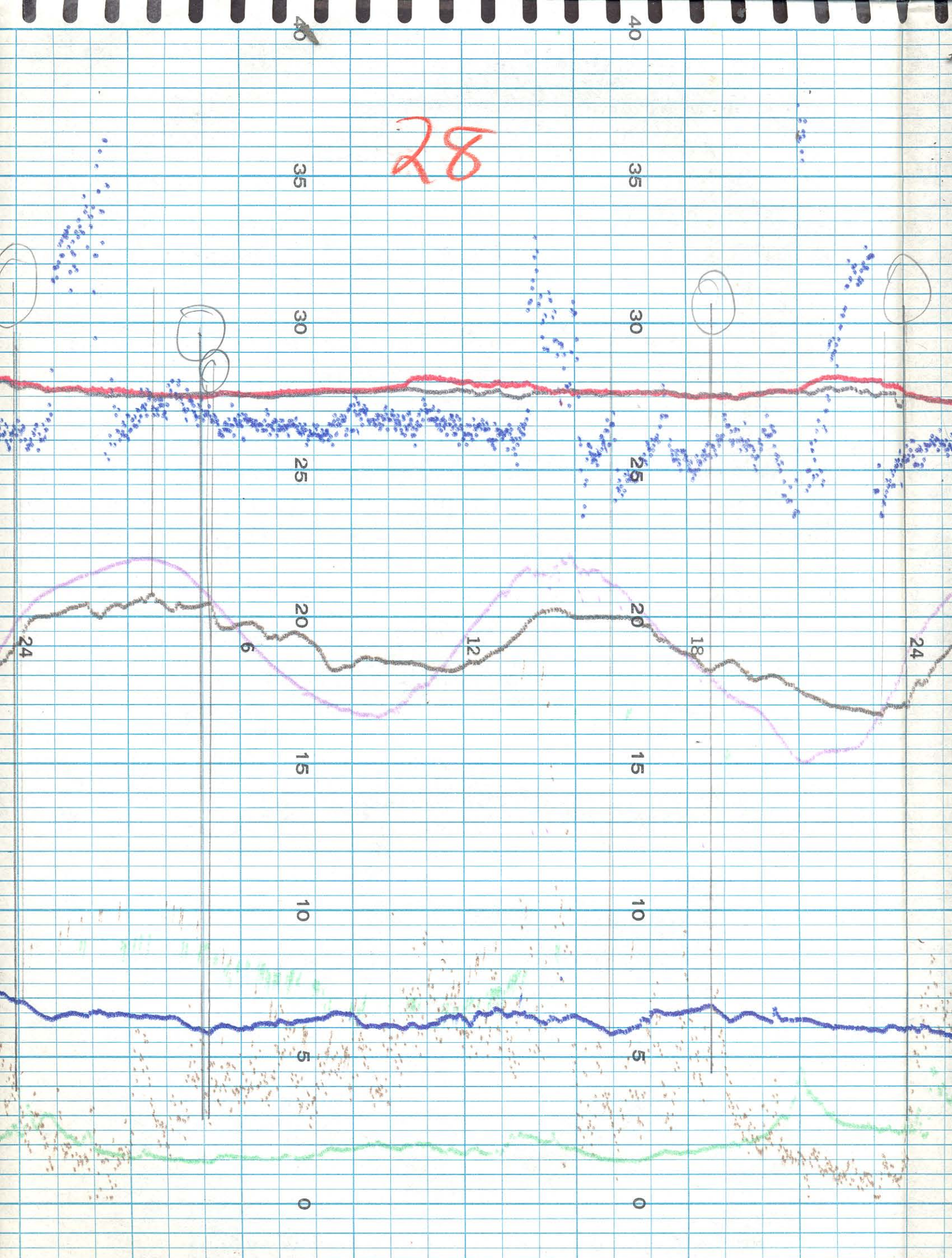


26

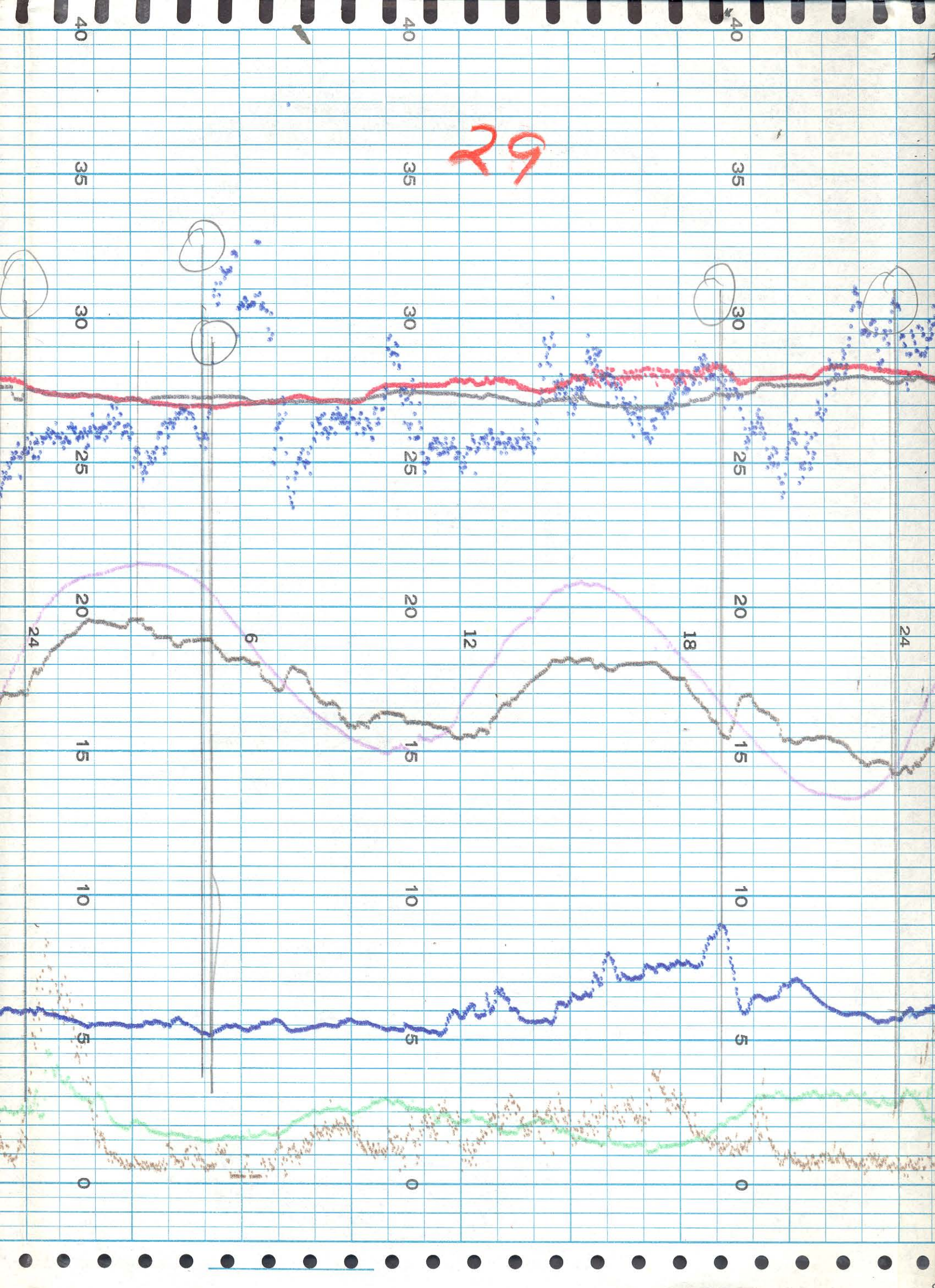




28



62



July 30, 1969

39
23
16

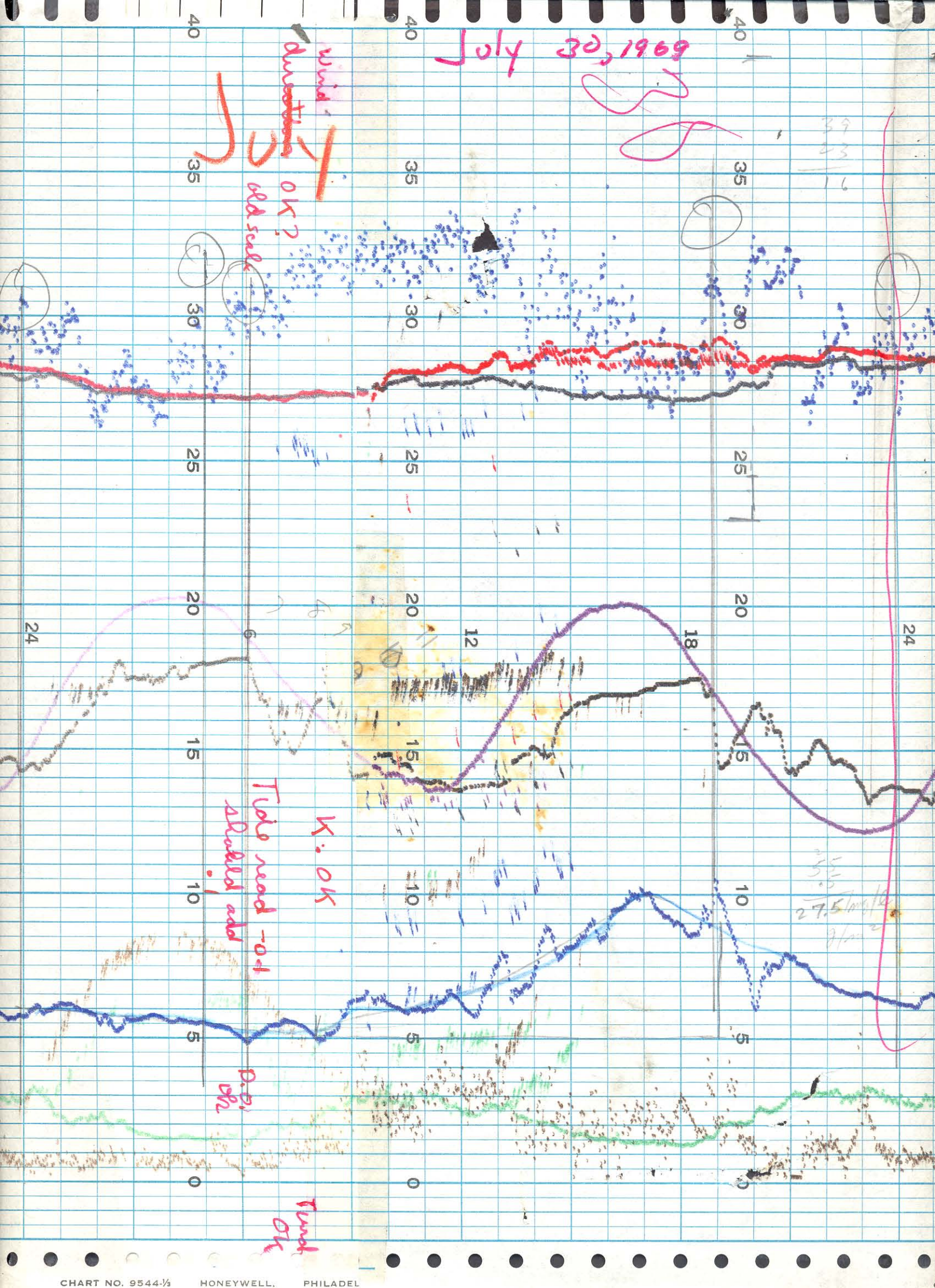
wind
direction
OK?
old sal

Tide read -0.1
Alaska add

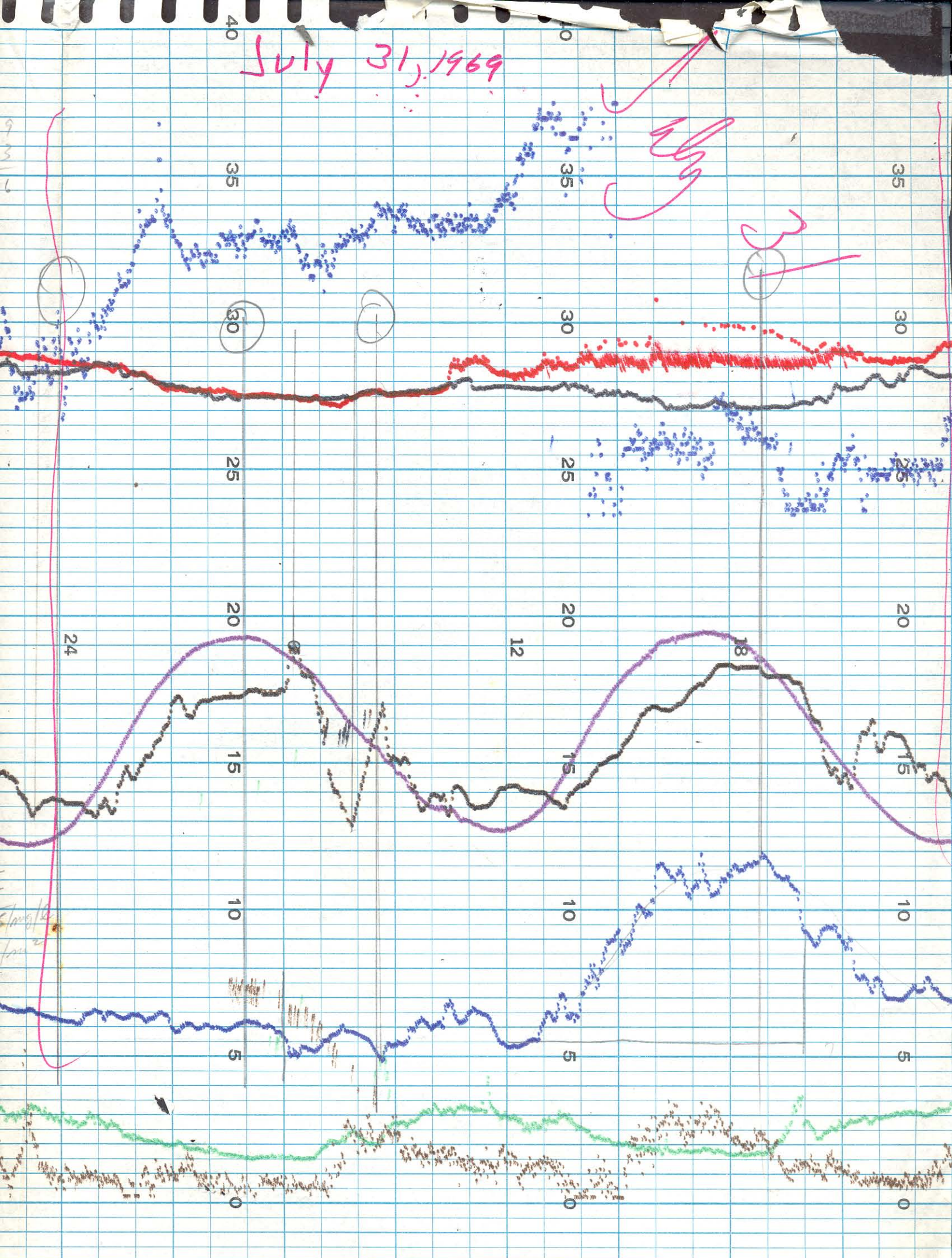
K: OK

D.P.
OK

Trend
OK



July 31, 1969



Month	July	July	July	July	July	July
Day	3	9	10	17	25	30
1969						
Time	1230	1000	1600	0945	0945	0800
Surf. Temp.	chart 28.7	26.5	27.8	28.8	26.0	27.4
	Temp. 28.6	26.2		28.2	26.6	27.1
Bottom Temp.	chart 27.6	25.8		27.6	27.0	27.2
	Temp. ^{Brunt} 27.7	25.9		27.3	—	27.1
Conductivity	chart 20.5 before 21.8 after			chart - 20.0 before dial - 20.1		16.6
	Cond. kel 39.4 @ 31.7°C	reset to 34.1 @ 23°C 34.3 @ 23°C		chart - 35.7 dial 35.1 @ 27.1°C 36.6		369 @ 26°C
Dissolved Oxygen	chart 6.0 5.6 5.2	5.6		4.1 before 5.1 after	4.7	4.9
	Winkler 6.6 6.5	4.9		5.2	5.12	5.1
Turb.	chart 14	12		15	18	26
	Wellige 13	13		13	16	23
Tide	chart +.2	+2.0		+1.9	+2.2	+0.6
	stiff +.1	+1.8 reset = .2		+1.5	+2.25	+0.7
Wind Dir.	chart 3			SSW	SSE	NW
	Dir. 4			SSW	SSE	W
Wind Vel.	chart N	5		4	8	3
	Vel. NNE	5		4	8	3

Reset Cond
Zero 4.7
span
Reset D.O.
Span 1.3

Reinstalled
D.O. probe
w/ new membrane
and plug

Reset Cond
Span 4.15
span chart +.6
Reset 5.5
Reset Tide

Note - old
Wind dir.
eggs better.
Recal. D.O.
+ temp
Note - old
K. obs don't need
correction

marks