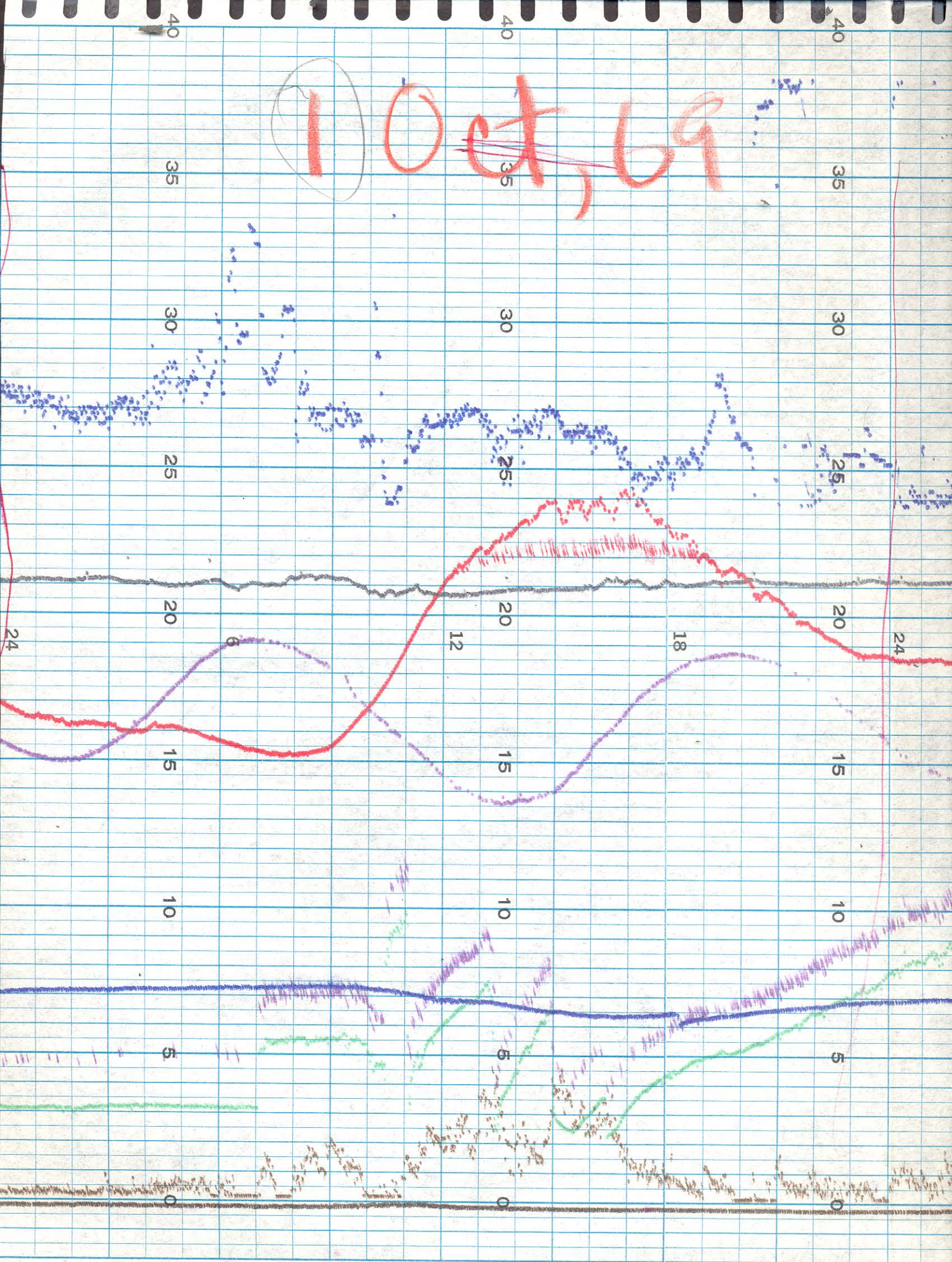
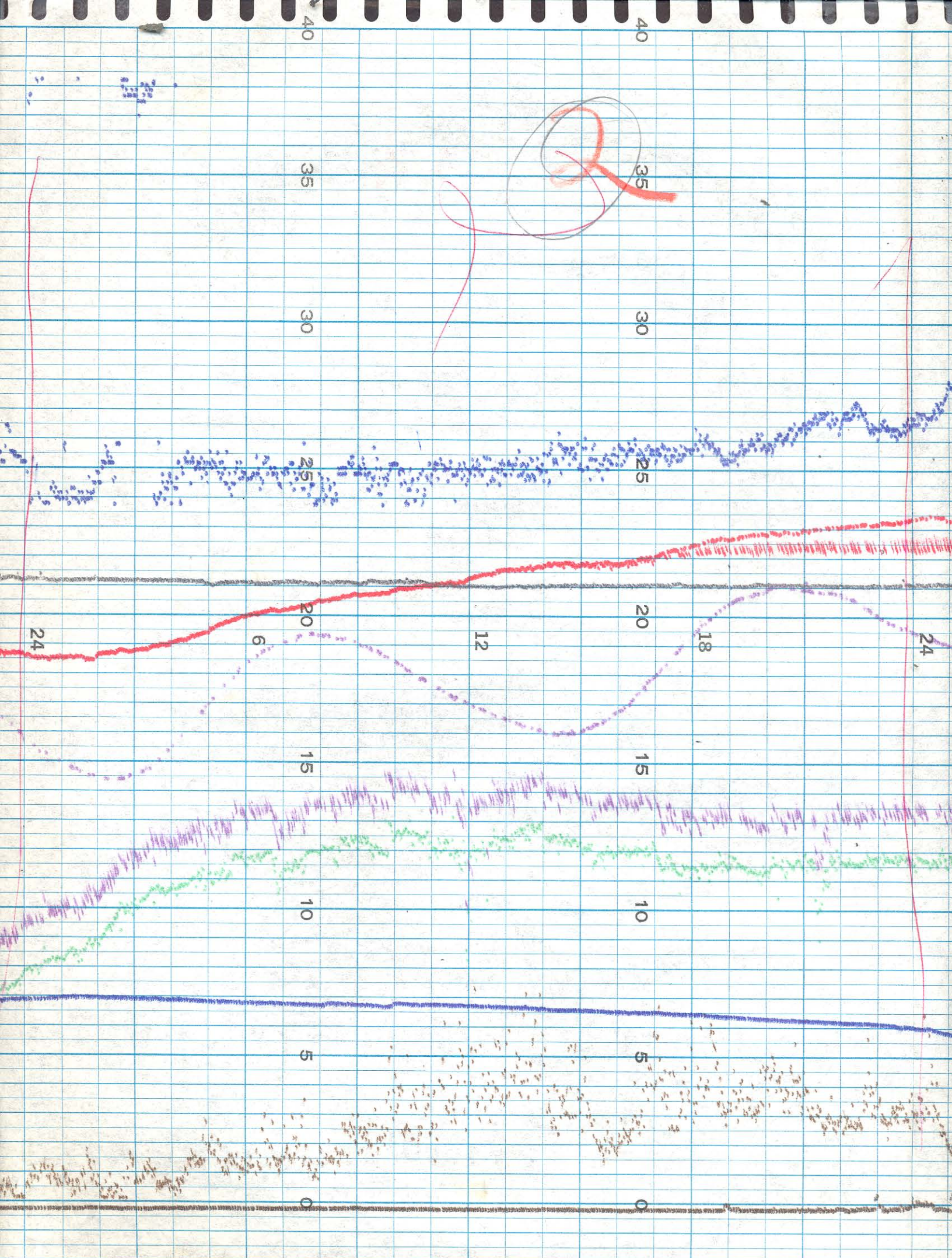
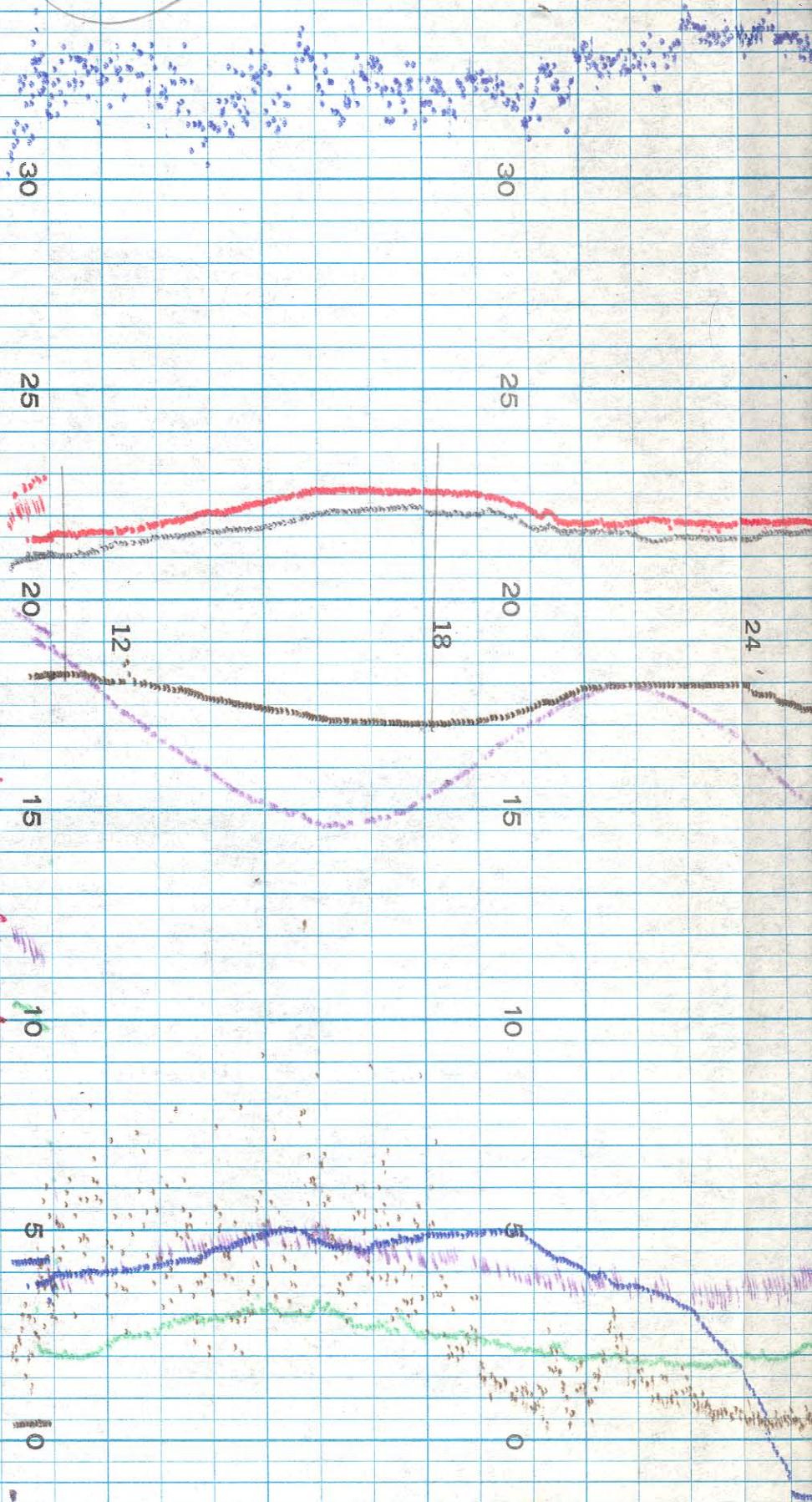


1 Oct 69

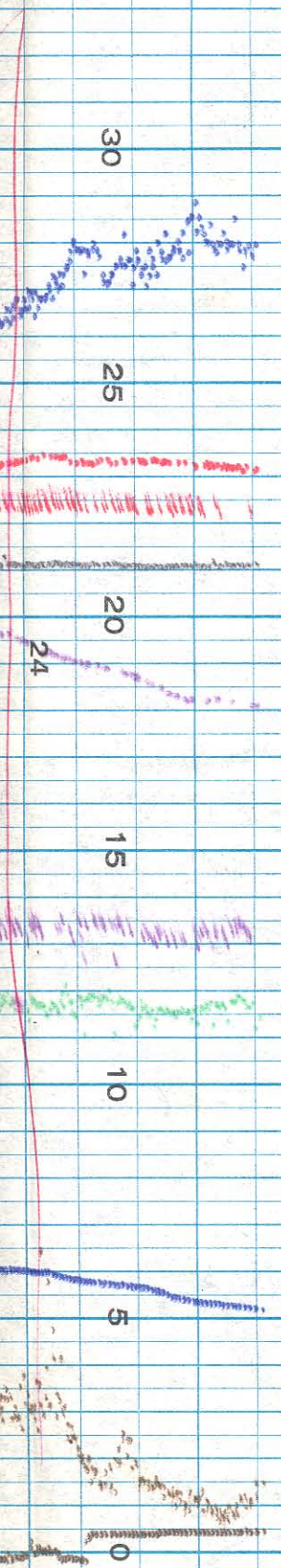


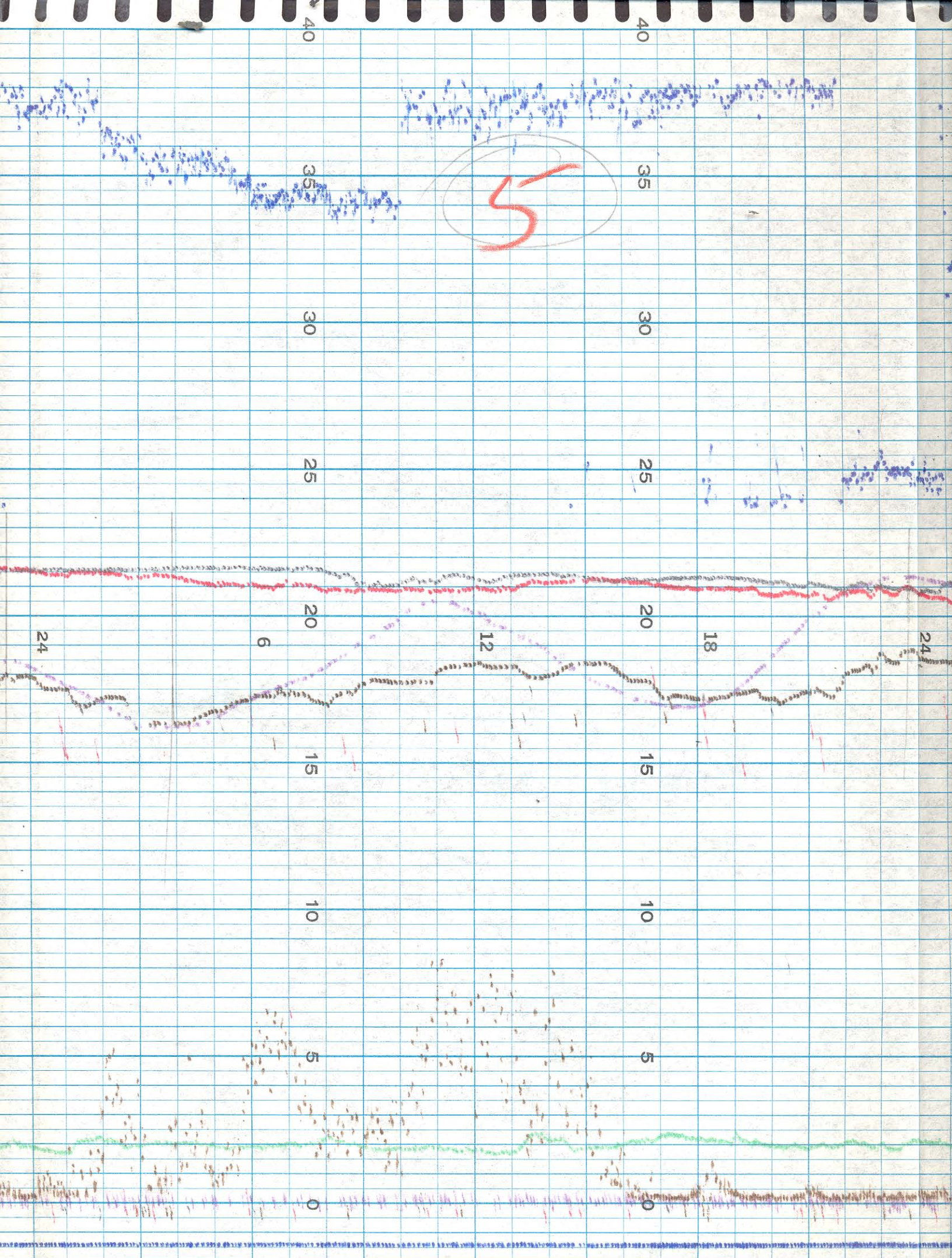


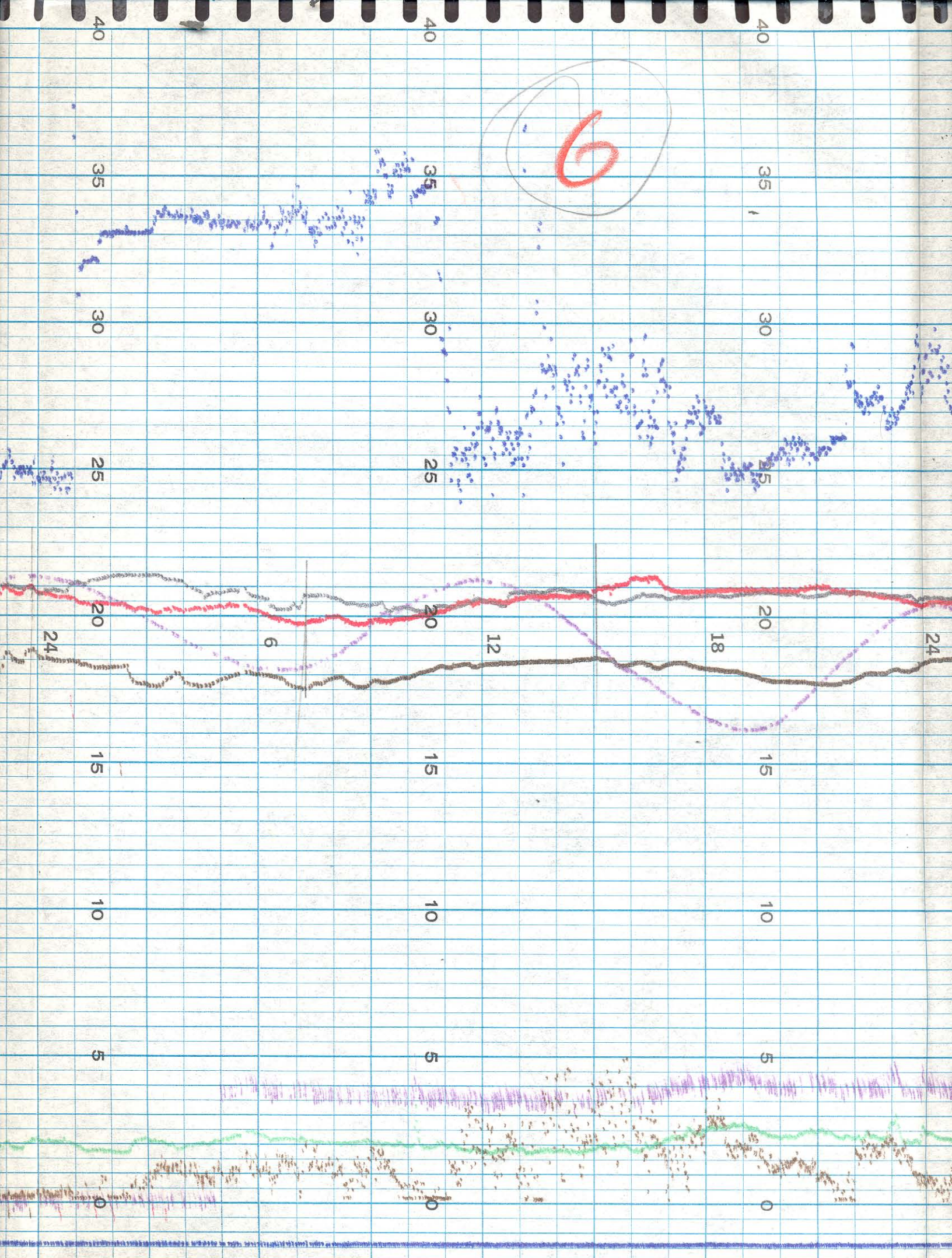
3

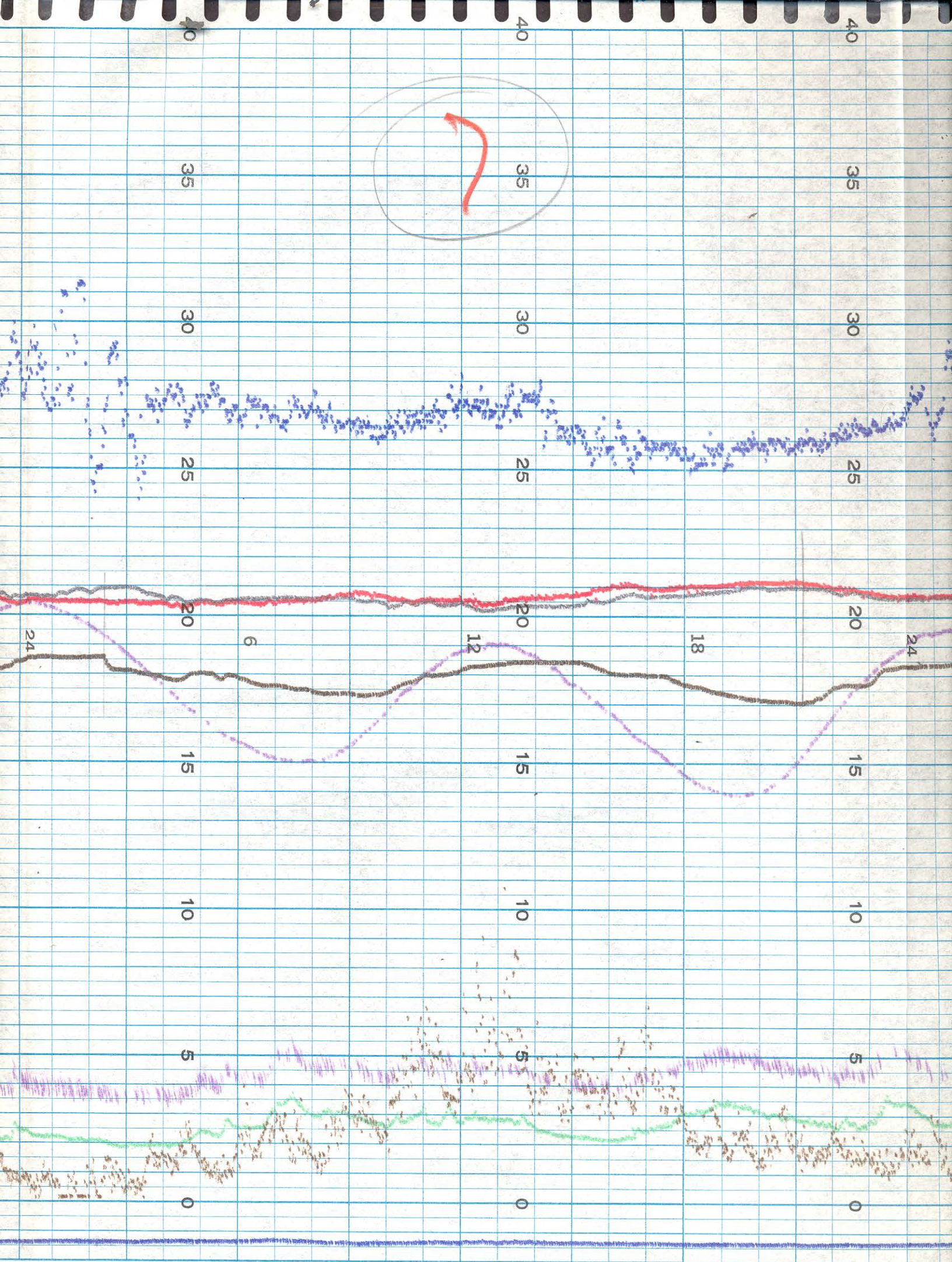


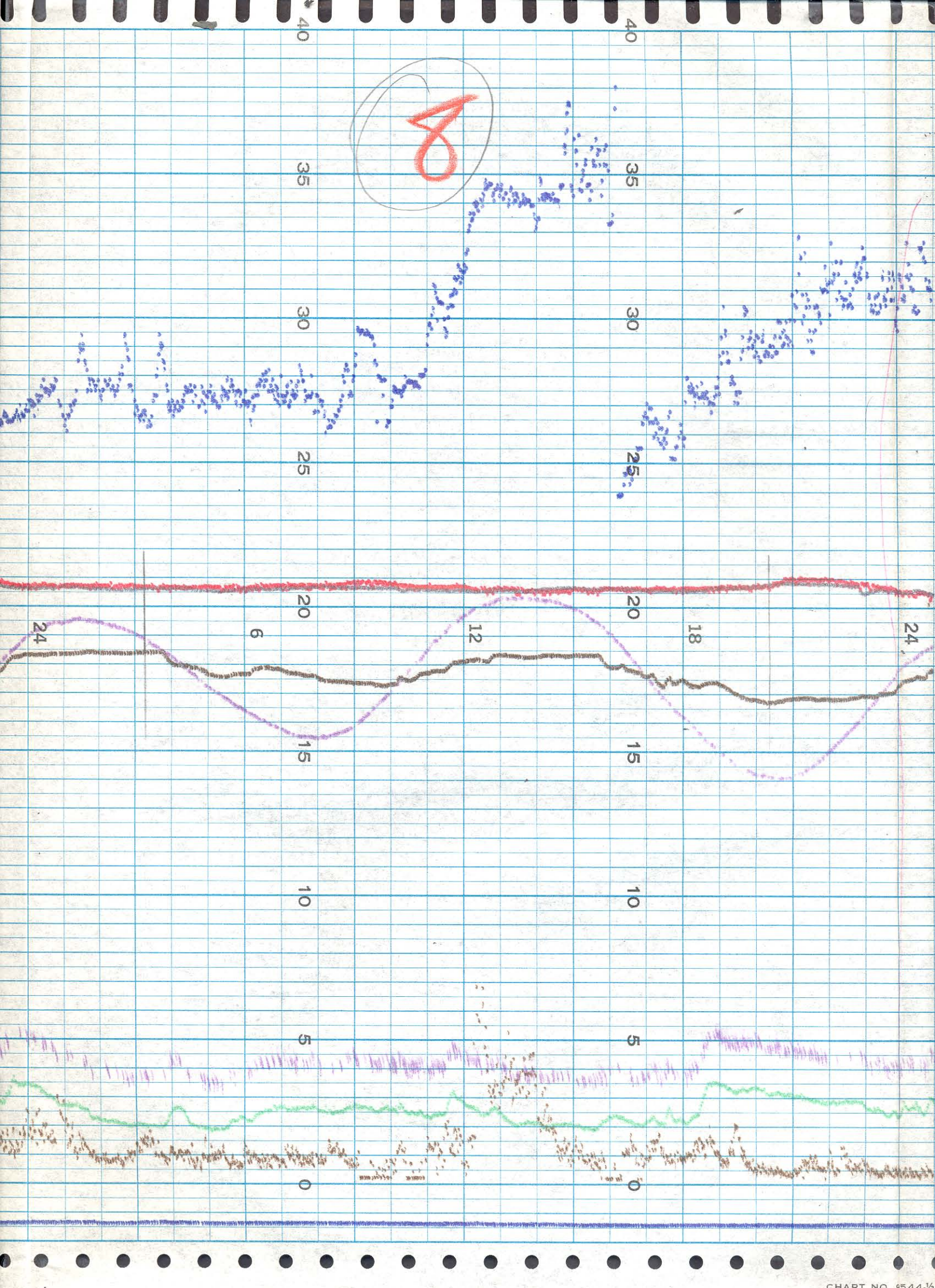
3 Oct 69
 Trigger arm cam lock changed cam
 off and replace state had broken on
 post-trim back 1/2 turn
 6

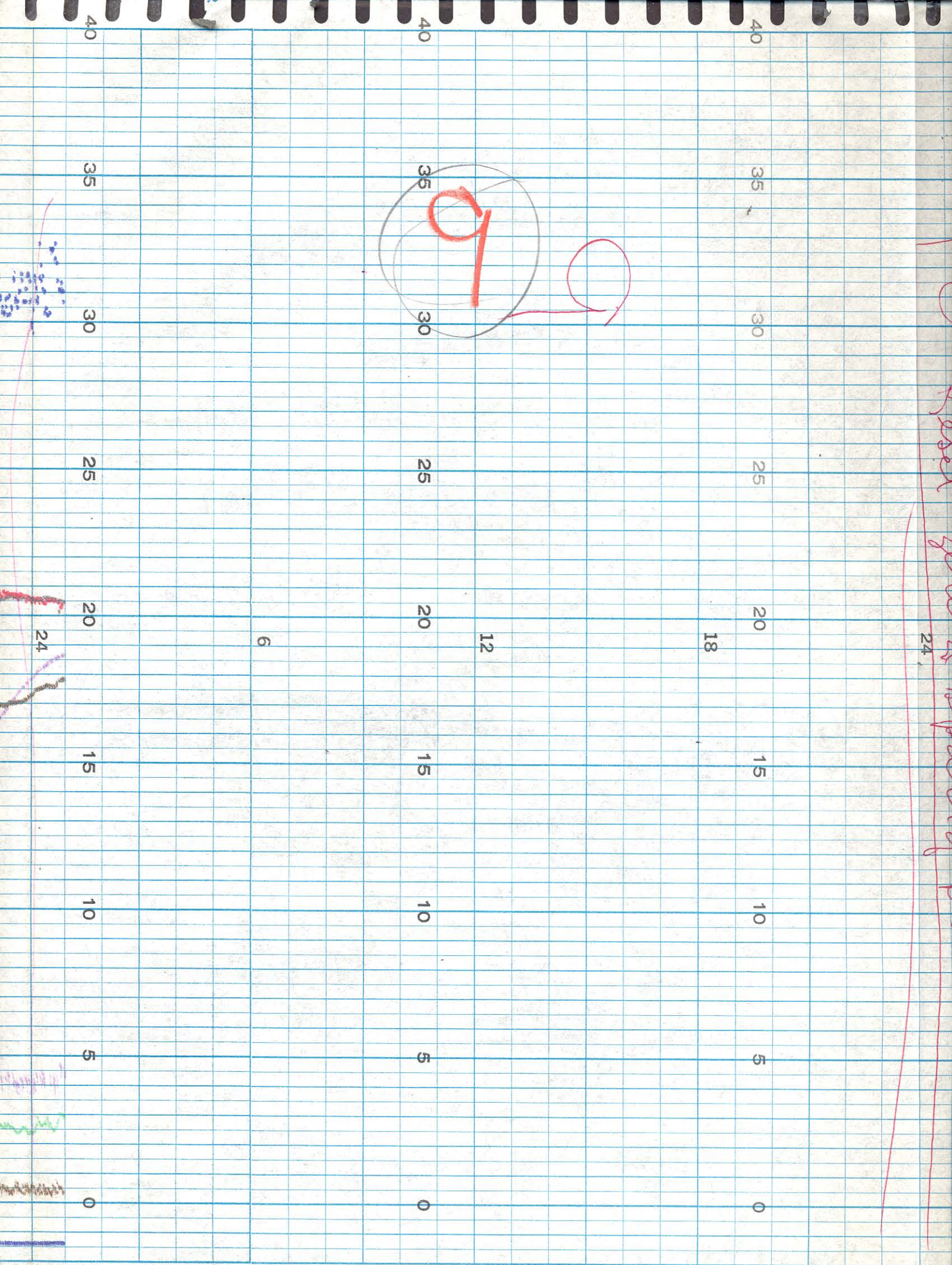




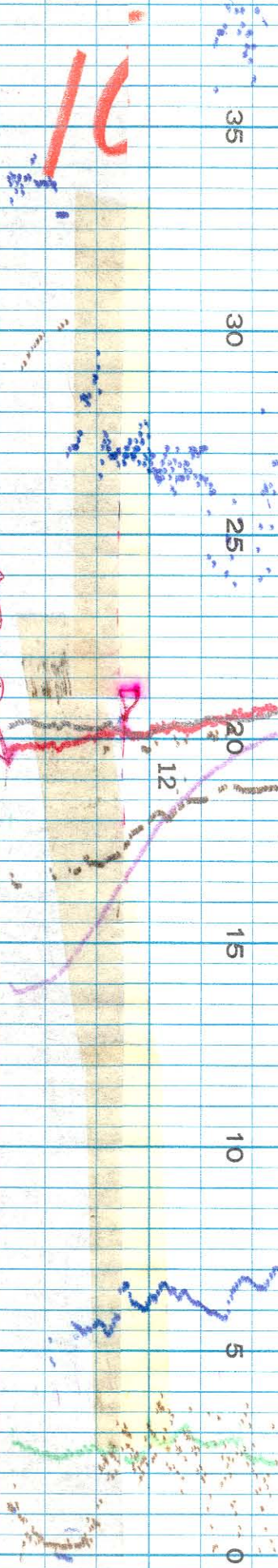








01



0915

10 Oct 69

Tracer arms was jammed, released
mounting arms not released, OK

When no wind about week 1-2 = 4
and week 3 mph

East zone & span of D.O.

5.8
+ 1
6.5

24

18

20

15

10

5

0

12

20

15

10

5

0

6

25

20

15

10

5

0

25

20

15

10

5

0

30

25

20

15

10

5

0

35

30

25

20

15

10

5

0

35

30

25

20

15

10

5

0



40

35

30

25

20

15

10

5

0

40

35

30

25

20

15

10

5

0

24

12

24

35

30

25

20

15

10

5

0

18

12

35

30

25

20

15

10

5

0

6

35

30

25

20

15

10

5

0

24

13

24

35

30

25

20

15

10

5

0

18

35

30

25

20

15

10

5

0

12

35

30

25

20

15

10

5

0

6

24

05.15.24 (a). Jack

14

56

30

25

20

01

10

57

35

30

25

20

—
01

10

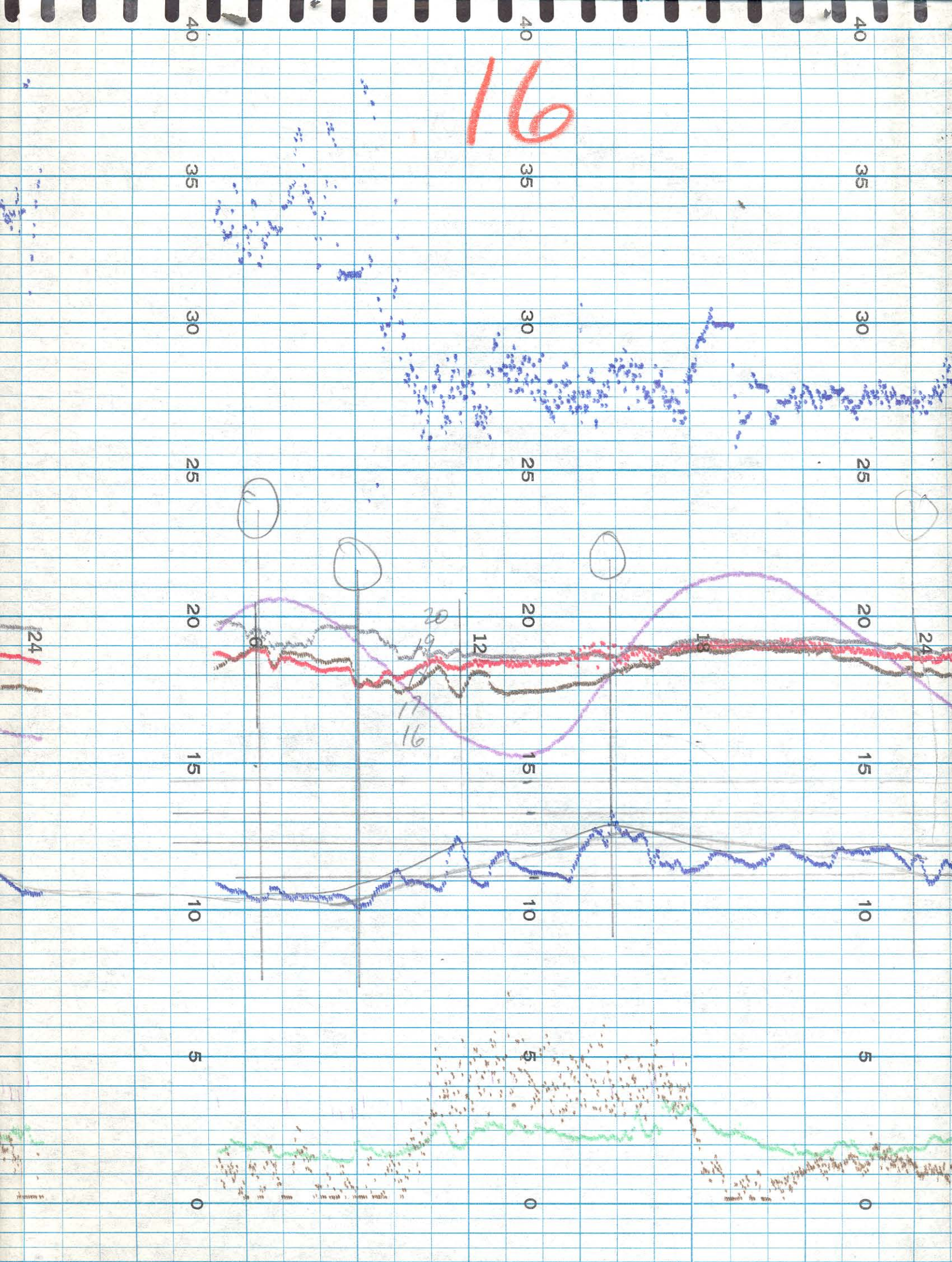
6

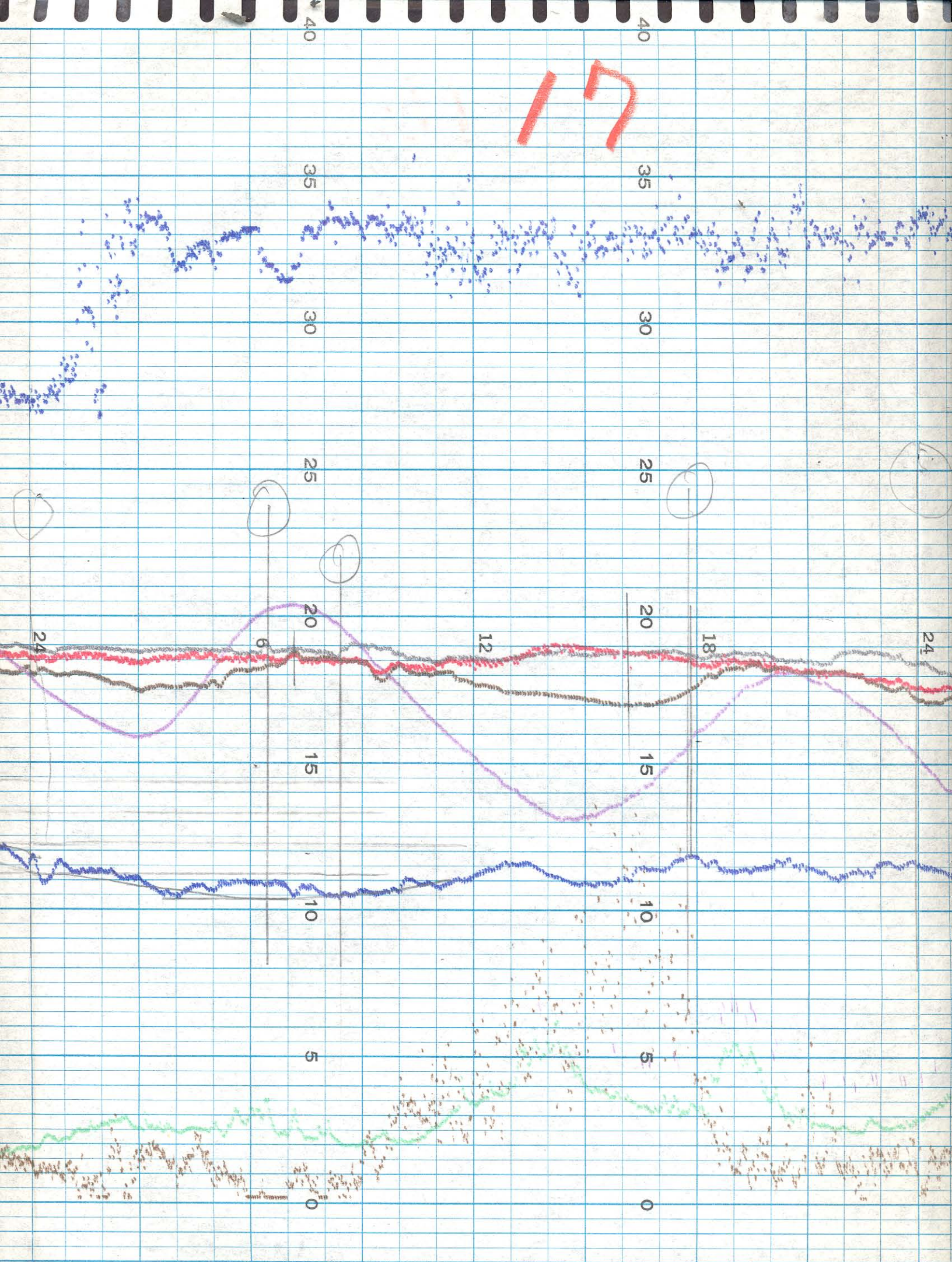
18

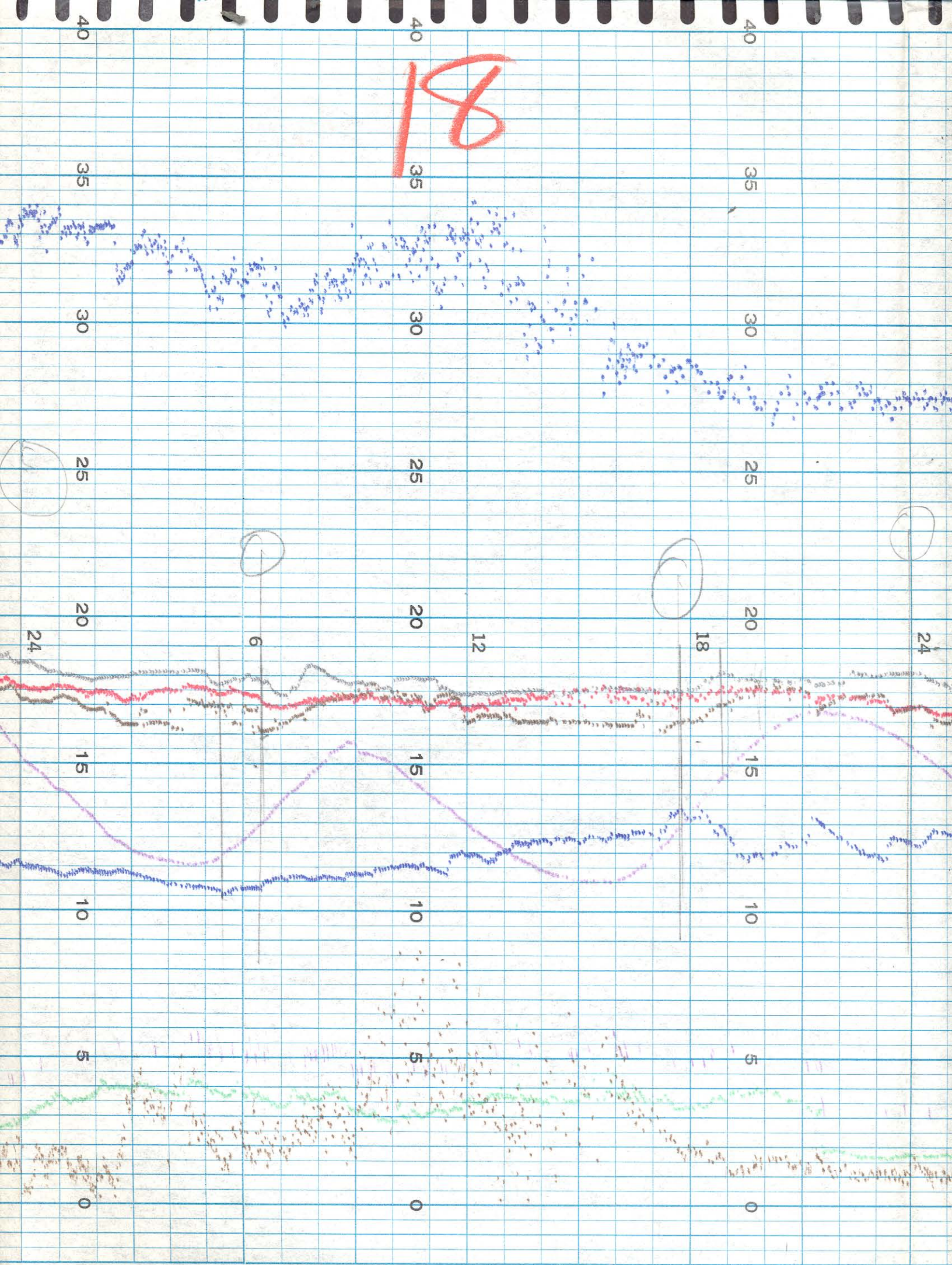
12

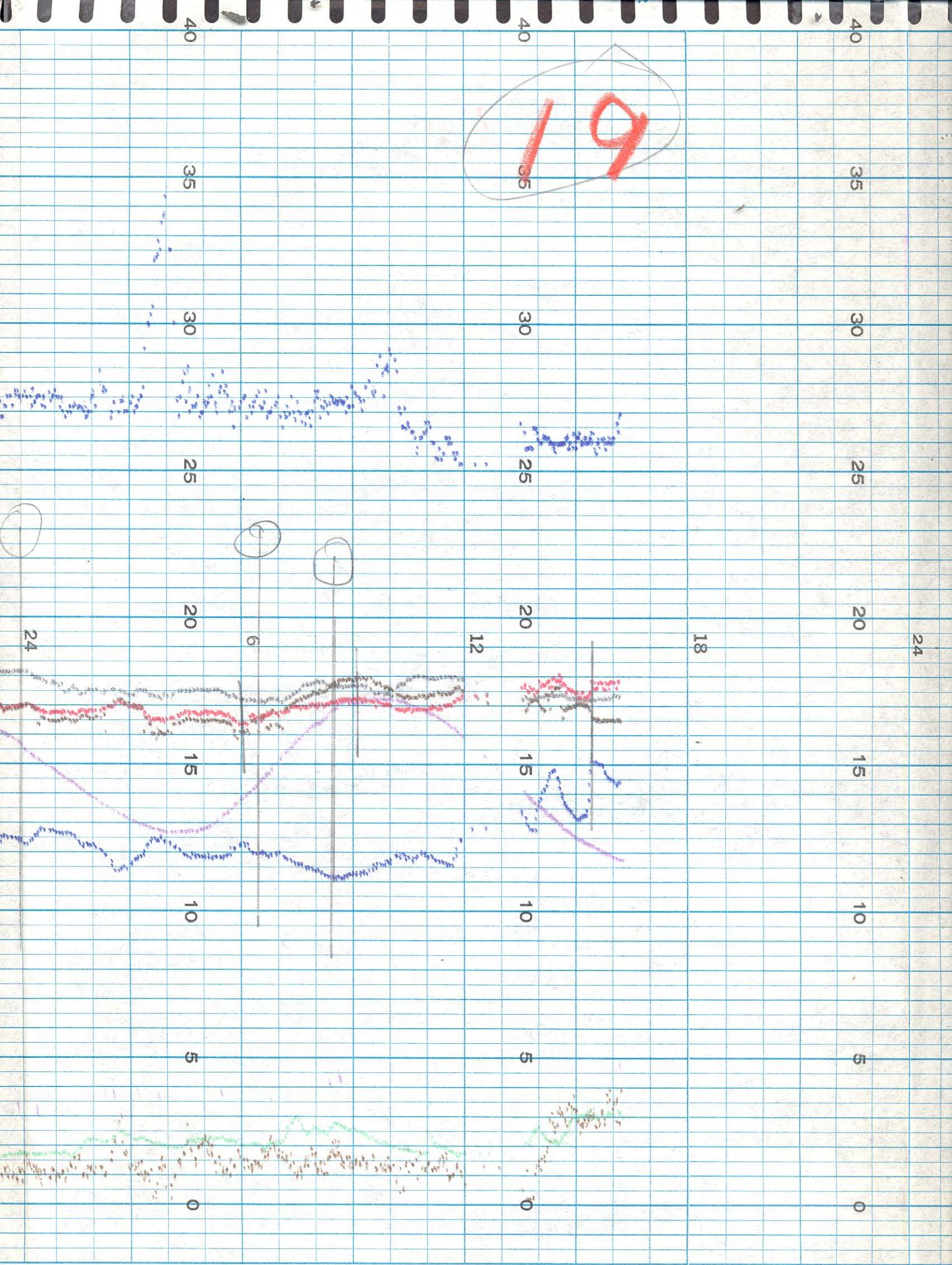
24

The image shows two separate handwritten sketches on blue grid paper. The top sketch is a triangle with a horizontal base and a vertical line segment extending from the top vertex to the base, representing an altitude. The bottom sketch is a circle with a horizontal line segment passing through its center, representing a diameter.









20

24

18

20

15

10

5

0

12

20

15

10

5

0

6

24

21

24

40
35
30
25
20
15
10
5
0

18

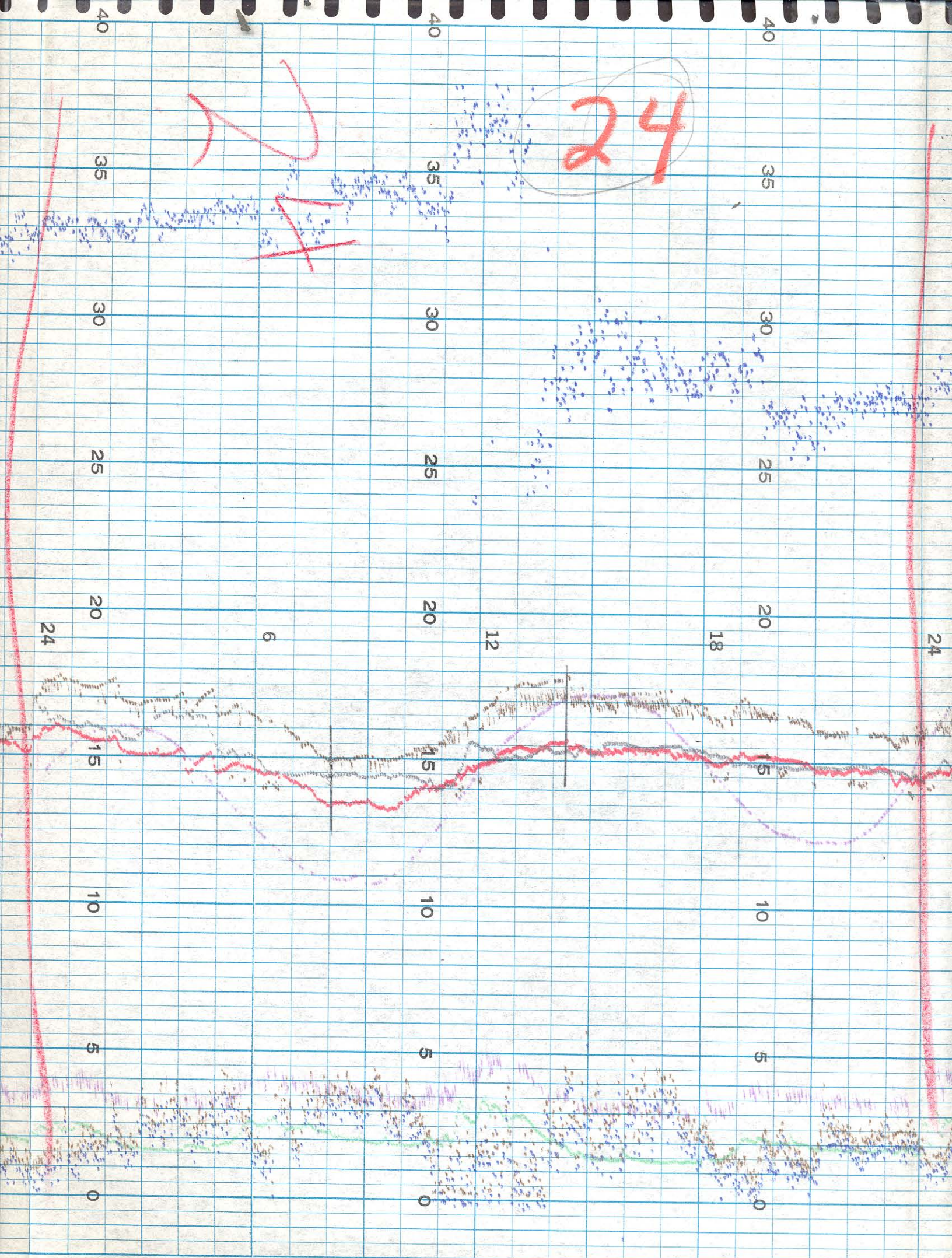
40
35
30
25
20
15
10
5
0

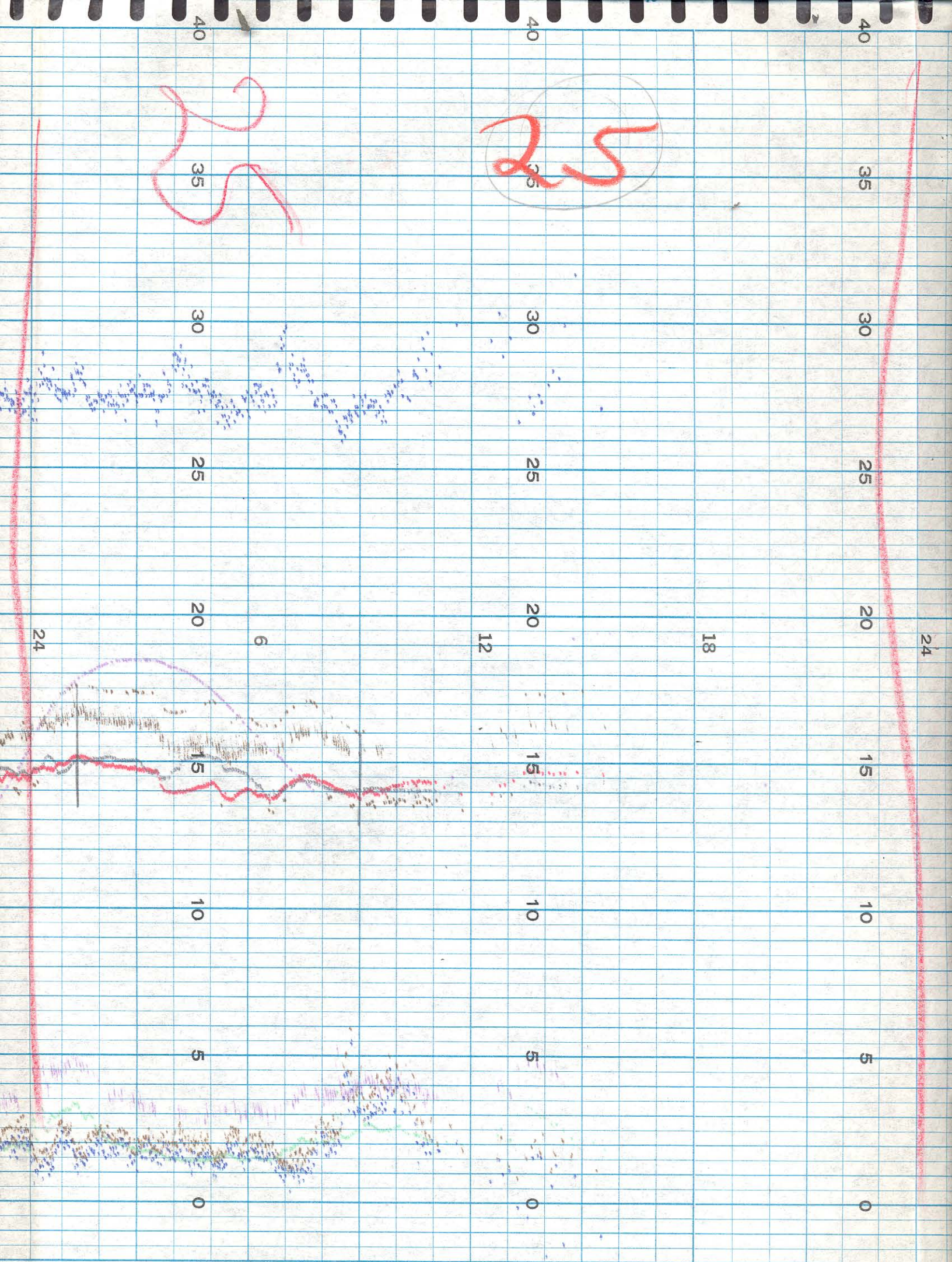
12

6

40
35
30
25
20
15
10
5
0

24





26

26

24

18

20

15

10

5

0

12

20

15

10

5

0

6

24

Set D.O. ²⁴ zone enough approx to
put most enough approx to
go from 16.6 to 8.6, therefore

raised zone and to lower D.O.
reading from 12.1 to ~~9.7~~ 9.7

Not enough zone and

D.O. reading 1.1 high
and add zone 2.4

12.1 put D.O. zone and lower

8.6 _{3.5} therefore D.O. in lower 3.5 high



280 of 69
place now part in trigger arm

30
25
20
15
10

Transfer across media + positioning

54 D.D.

62

24

18

20

15

10

5

0

12

20

15

10

5

0

6

24

30

24

18

12

6

24

Oct. 31, 69

18

12

6

24

Month	Oct.	Oct		
Day	19	23		28
Time	1969 0830	0830		1000
Surf. Temp.	chart. 18.7	14.4	dreaded left too light	13.2
Temp.	18.9	15.3		13.2
Bottom Temp.	chart. 18.6	17.3 bristled 15.2		13.3
Conductivity	chart 28.1	15.7 25.4	bracket broken, beeper mounting bigger when there was a surge	15.4 bet } 15.7 After } 15.9 after chart. 26.1
Conductivity	Cond. kel 27.4 @ 12°C	24.6 @ 7°C		25.9 @ 9.4°C
Dissolved Oxygen	chart 5.5	12.2		16.2
Turb.	Winkler 6.5 Reset	7.9		8.6 8.6
Tide	chart. 30			21
Tide	Welling. 36			17
Wind	chart +0.3	-1.4		-0.4
Wind	Staff +0.4	-0.9		-0.4
Wind Dir.	chart N	NW		N
Wind Dir.	N	NNW		N
Wind Vel.	chart 20	8		13
Wind Vel.	20	8		13
Notes	Reset and -600 Reset tide +0.5 Reset Sun Temp	bracket broken, beeper mounting bigger when there was a surge		30.0