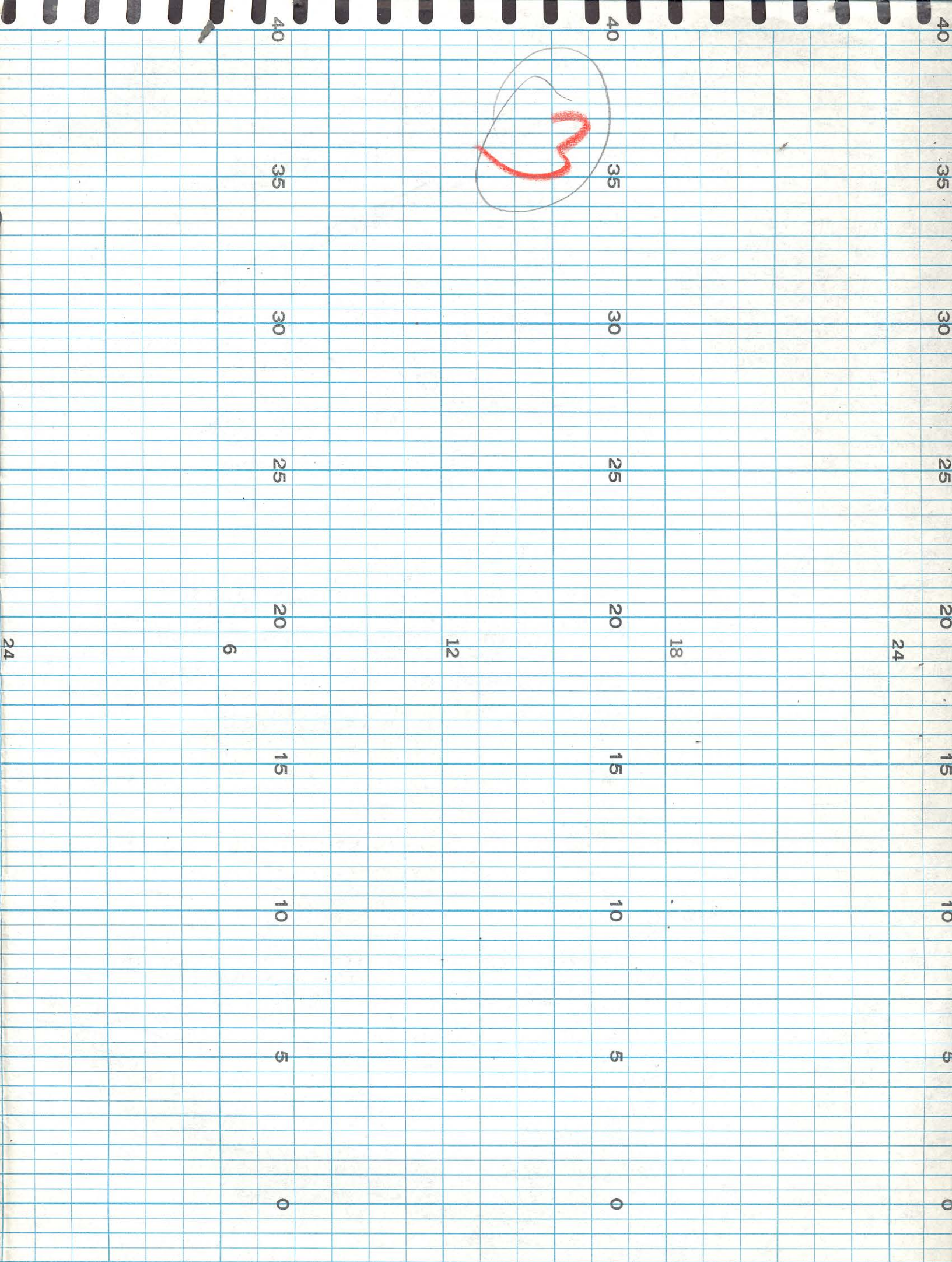


September 1 -2, 1969

No Data.



D.O. moving the nesting stage  
24  
Trigger arm was loose

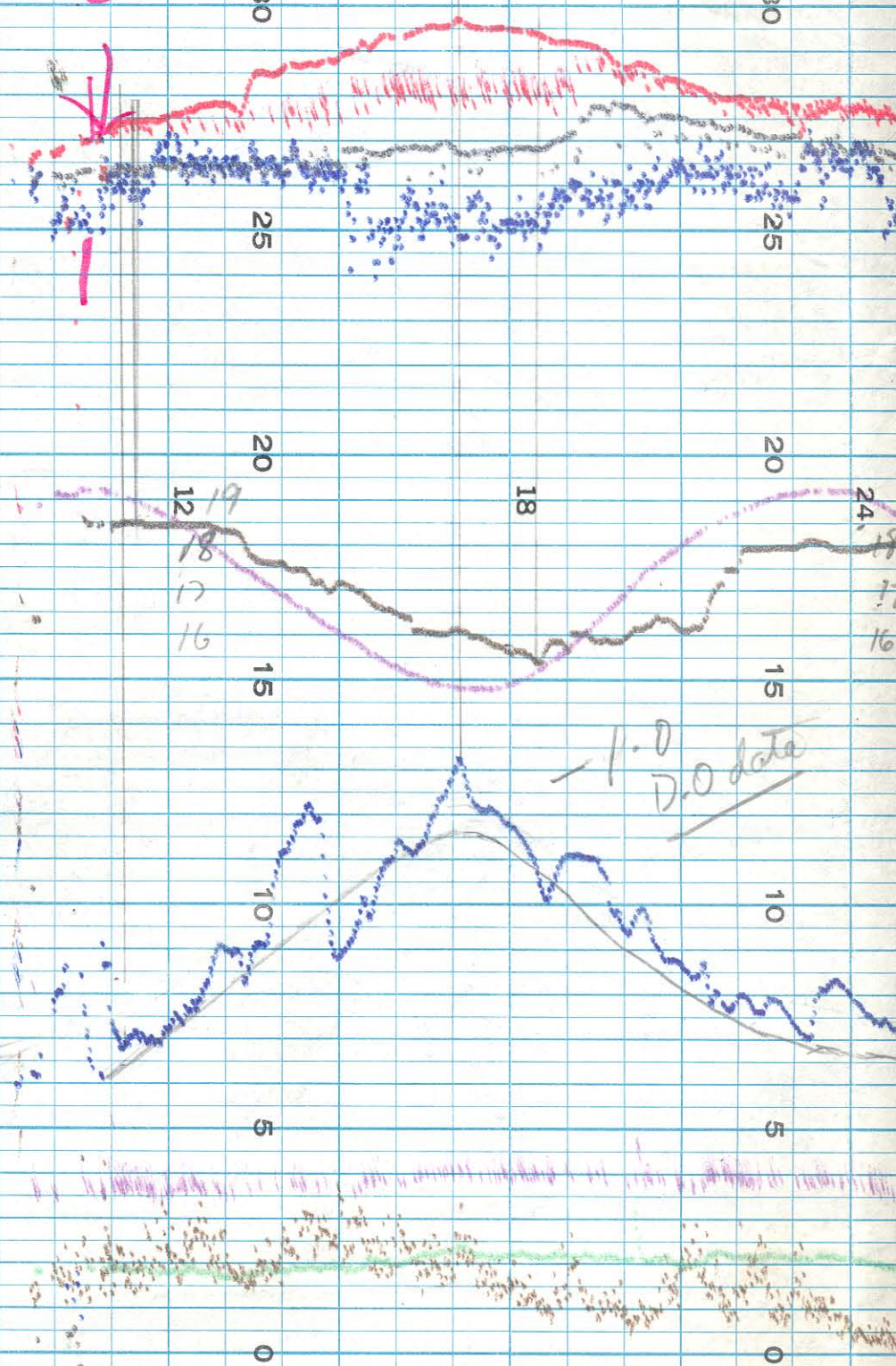
Shu

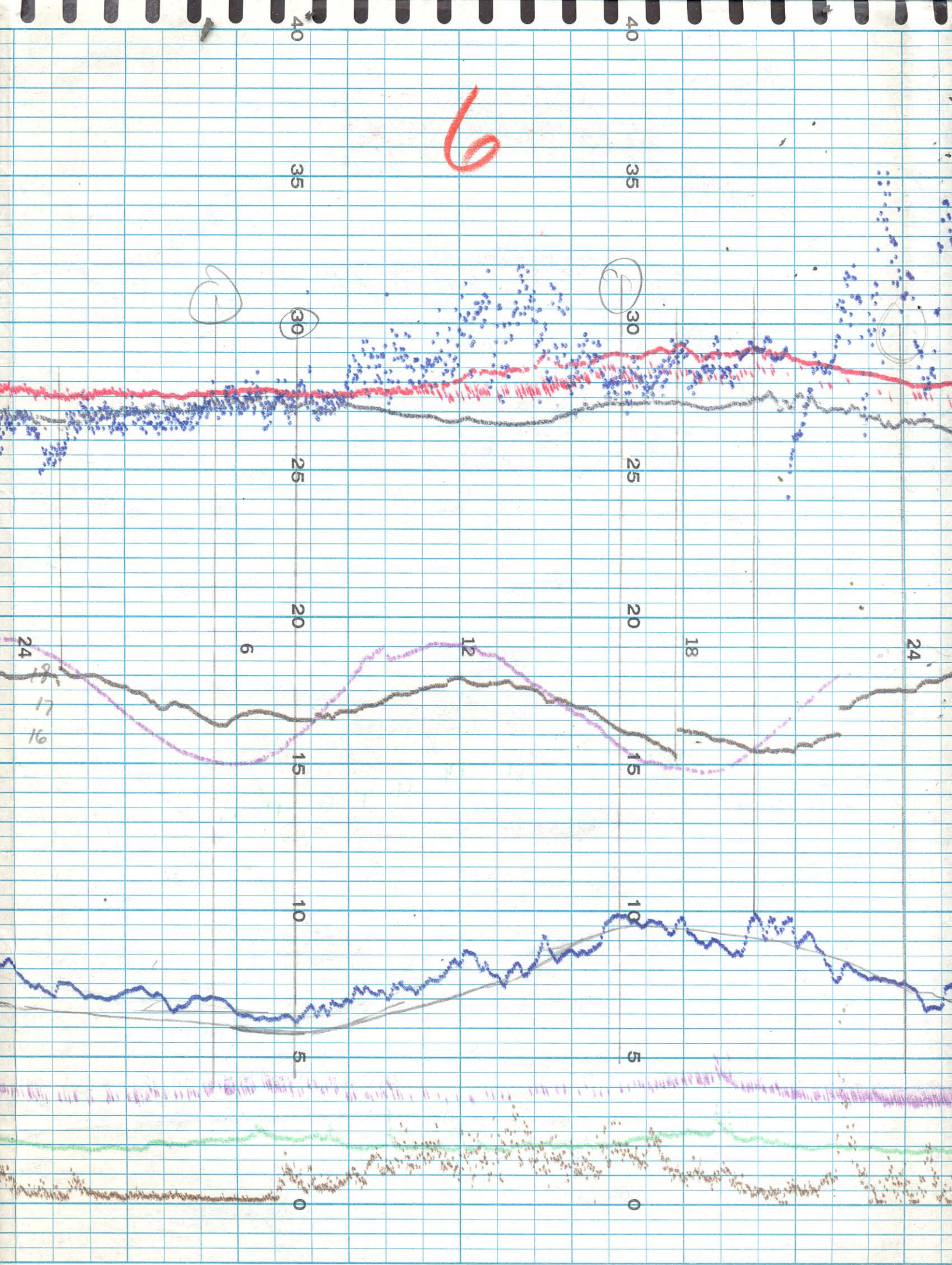
5

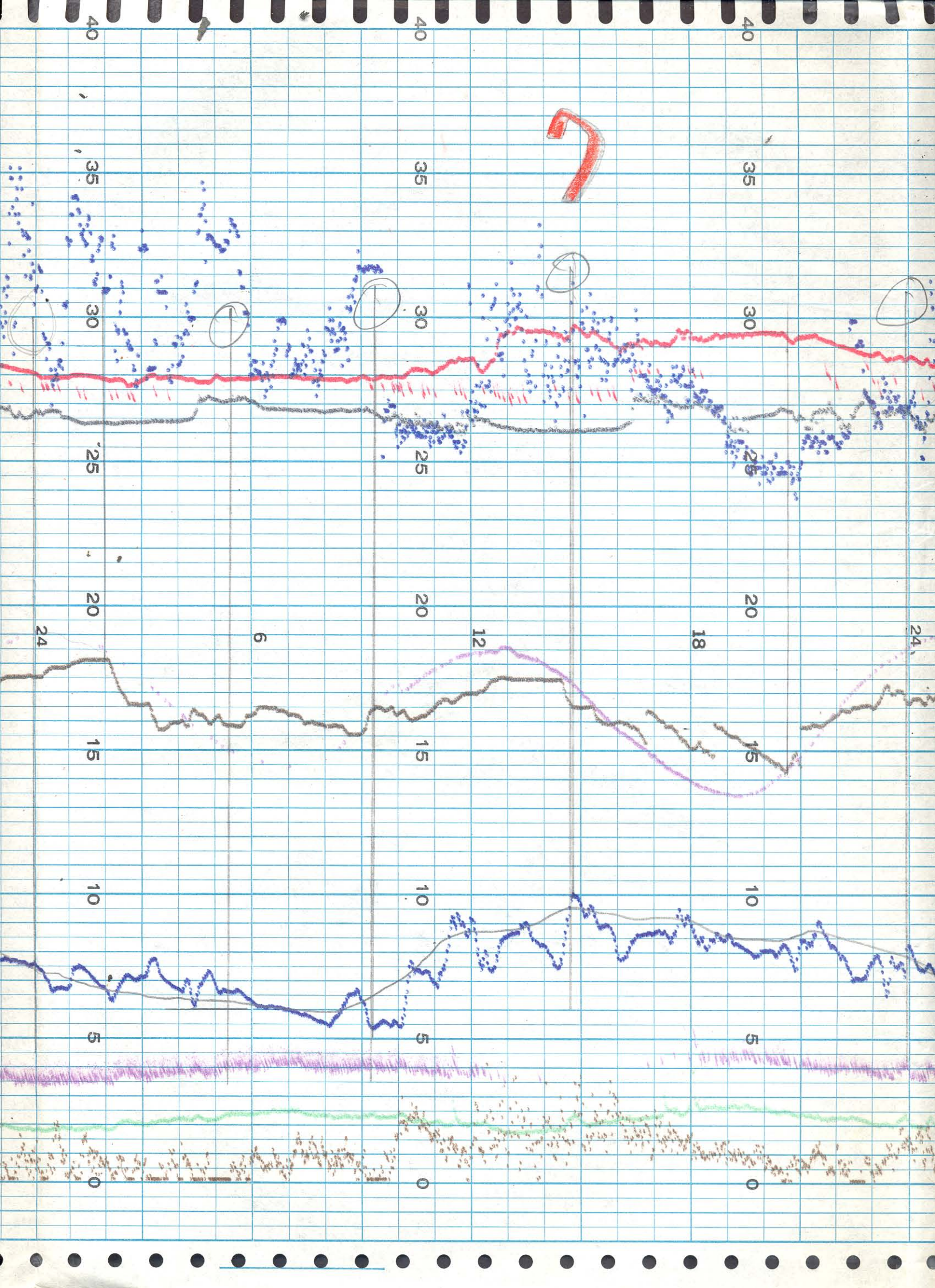
D.O. may be necessary  
 Rest end + 1,400  
 D.O. may be necessary  
 Rest end + 1,400

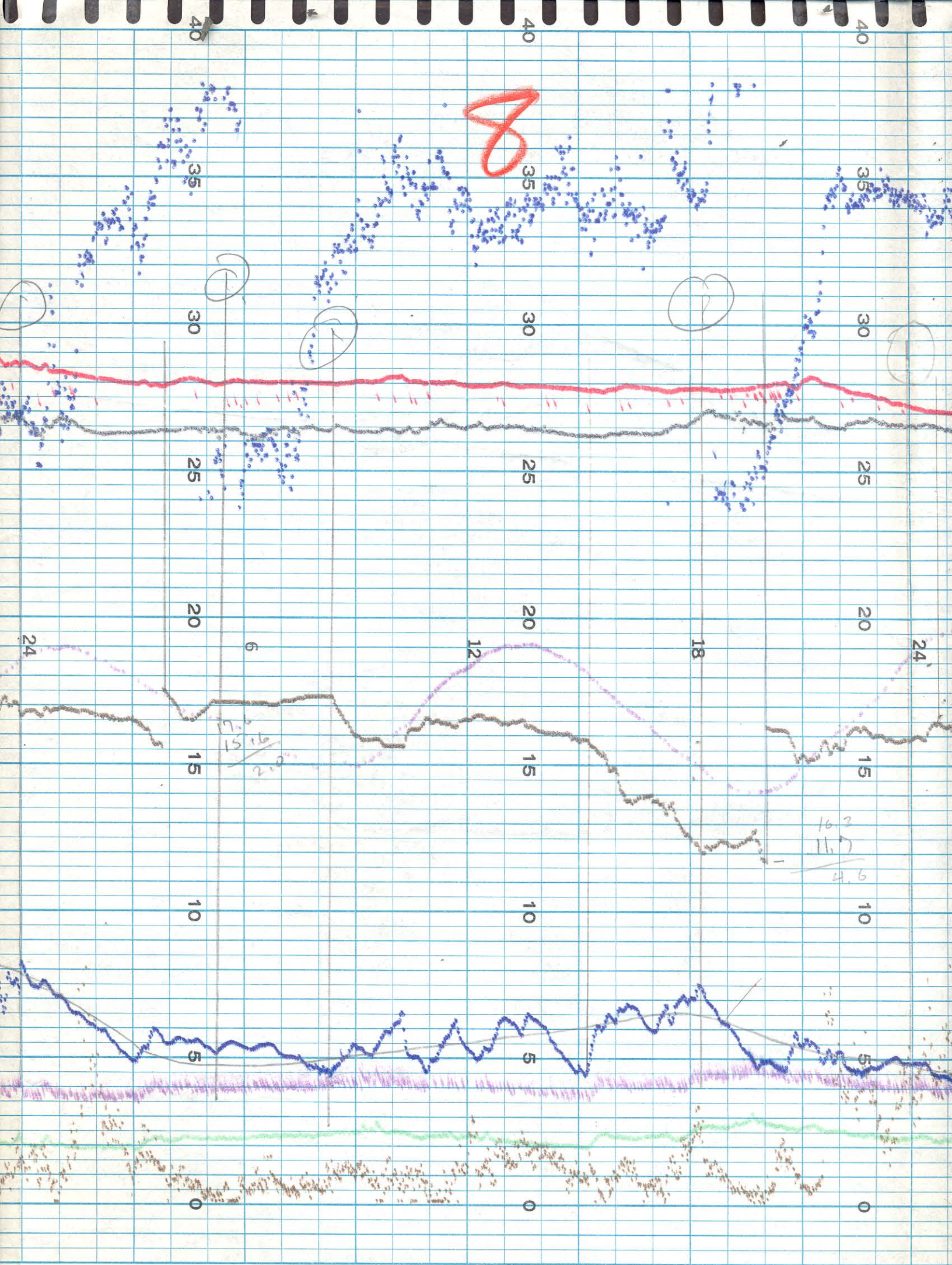
Sept 5, 1969

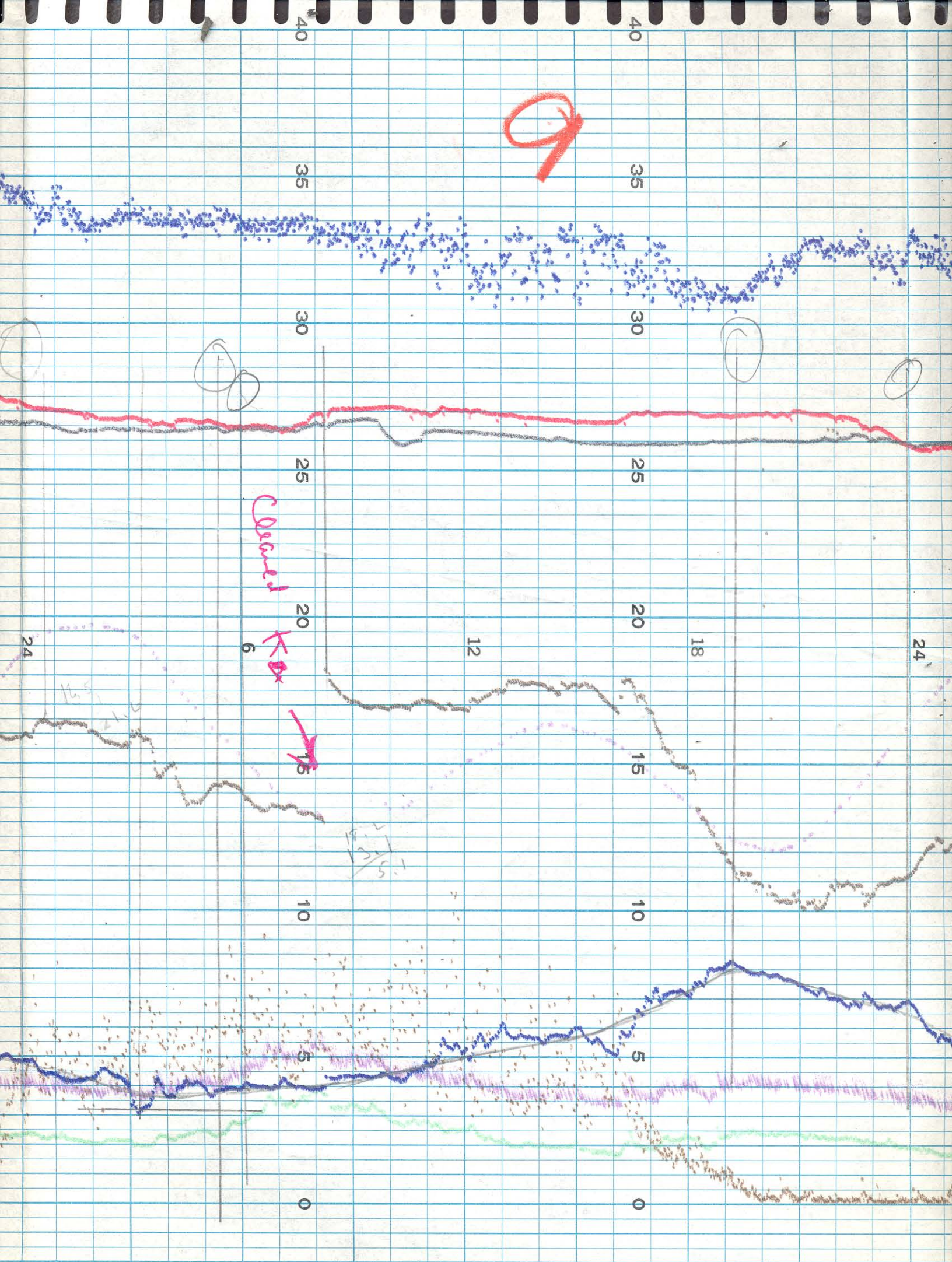
1050

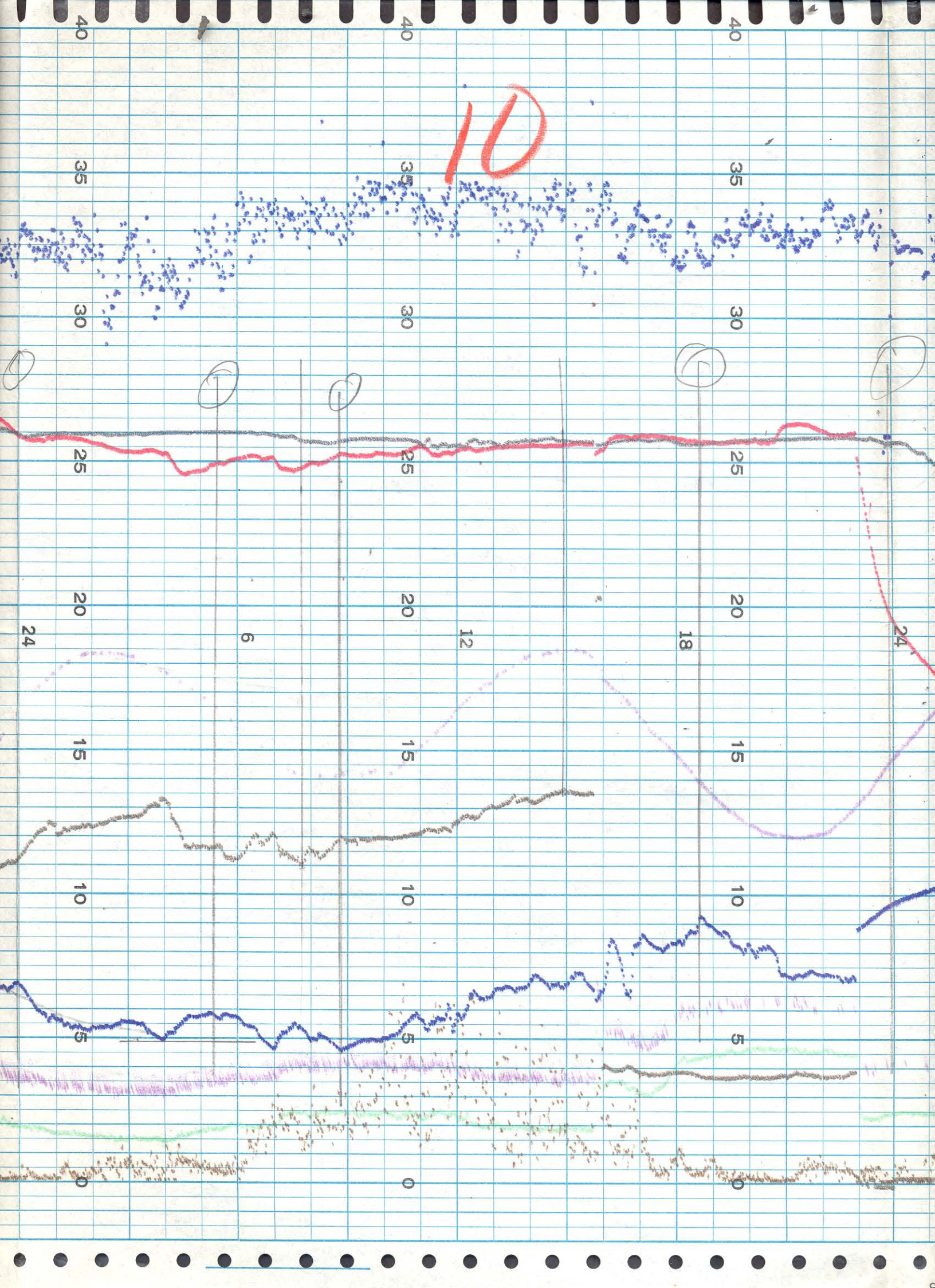


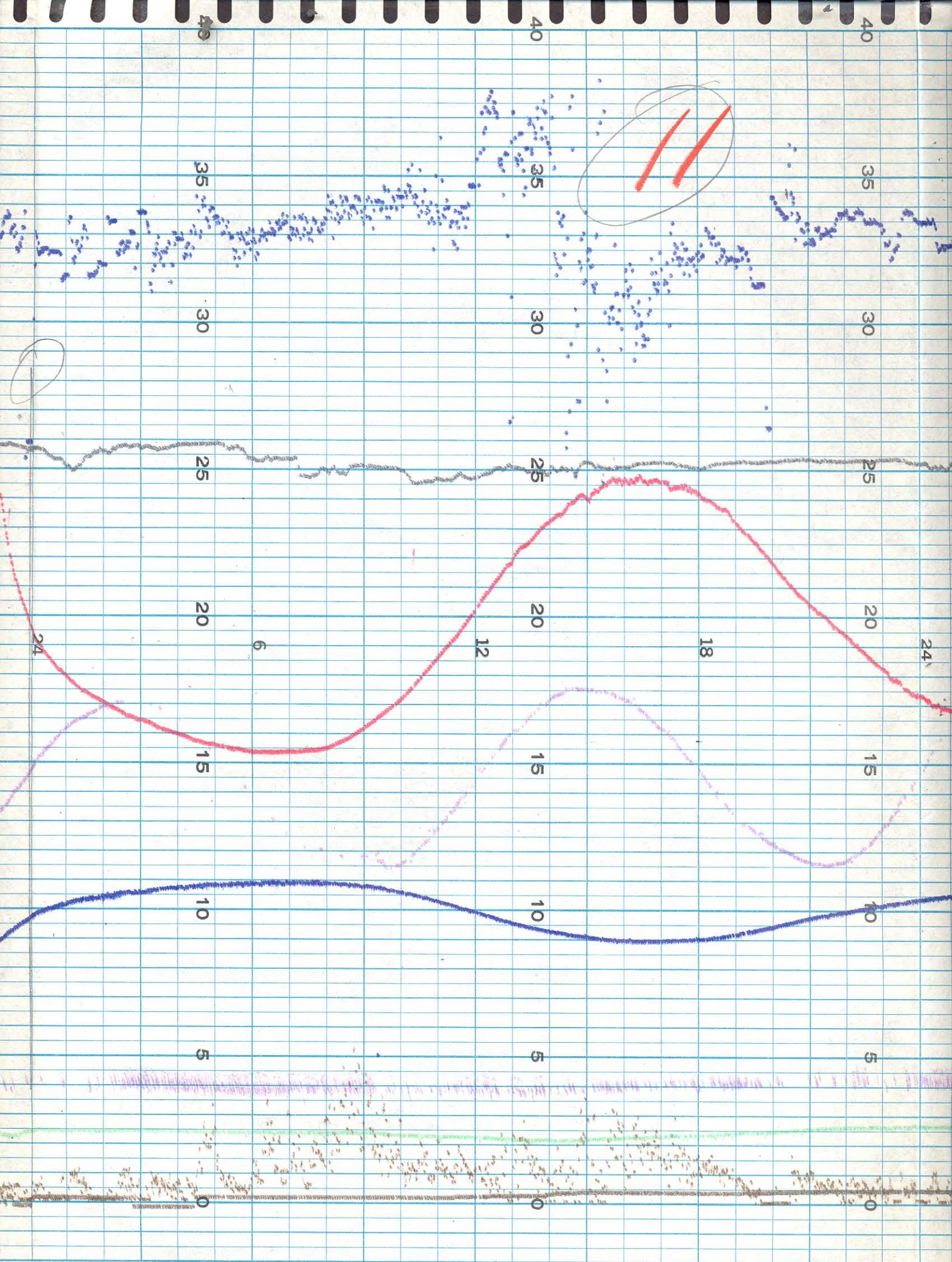


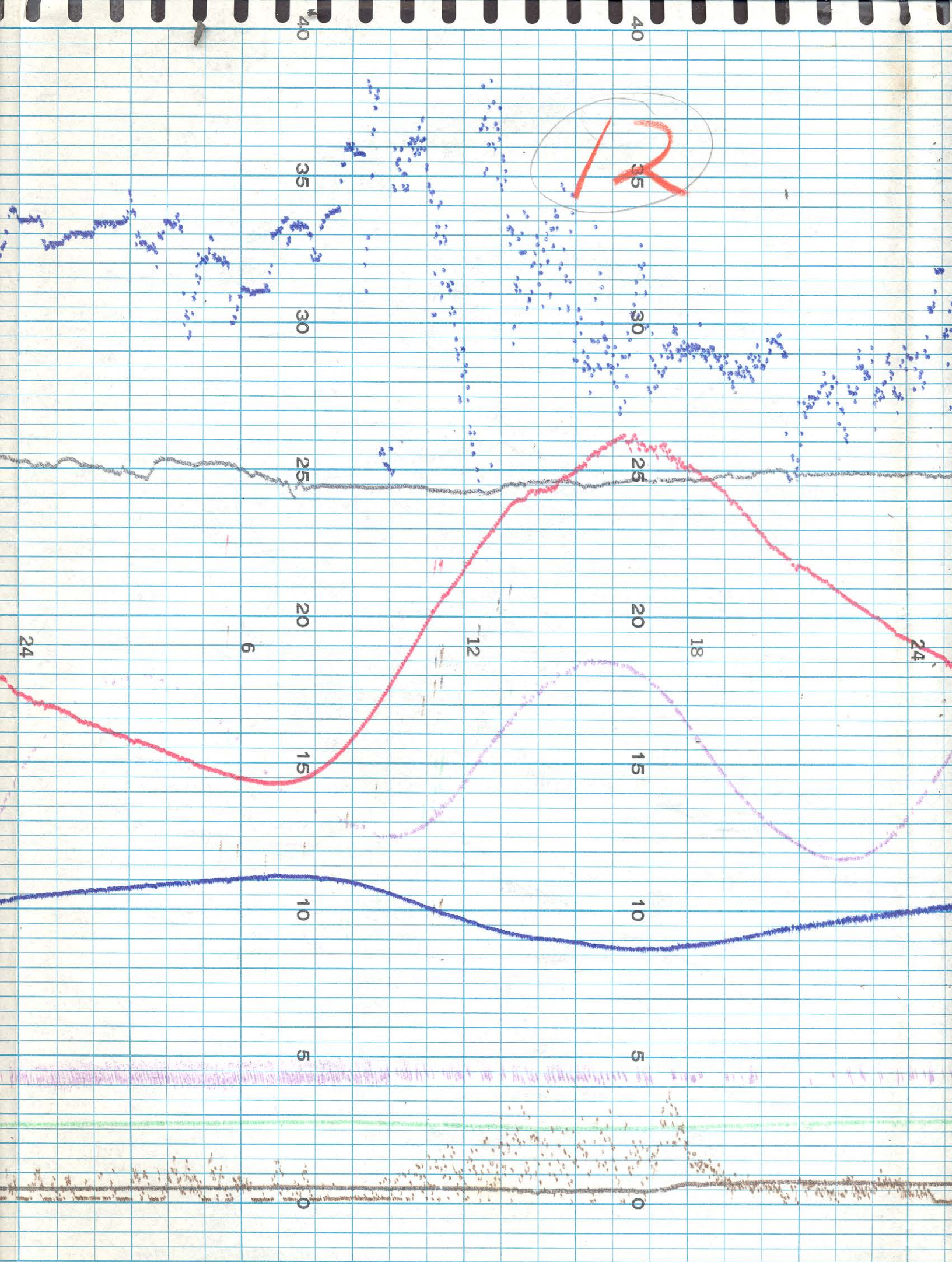


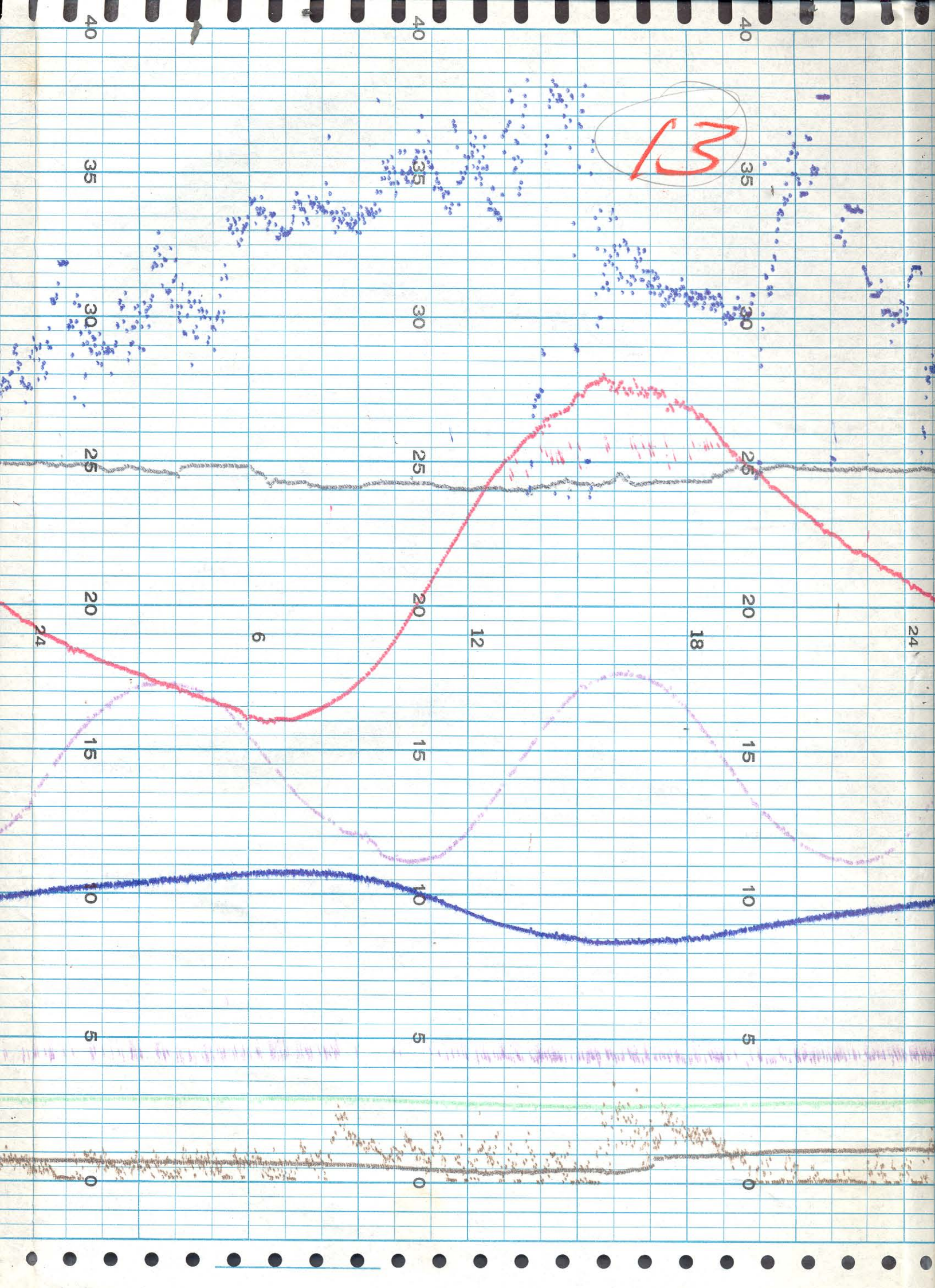


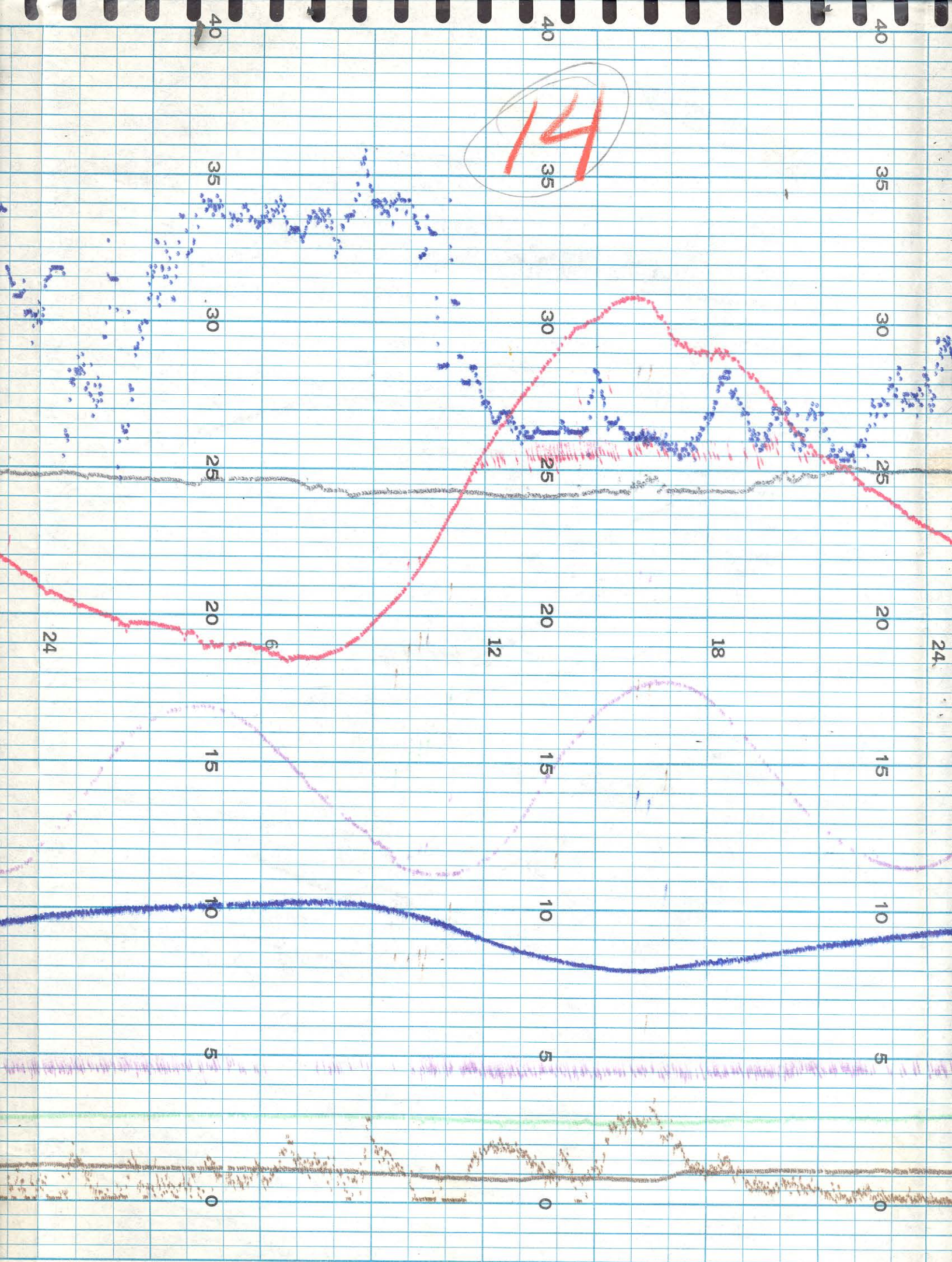


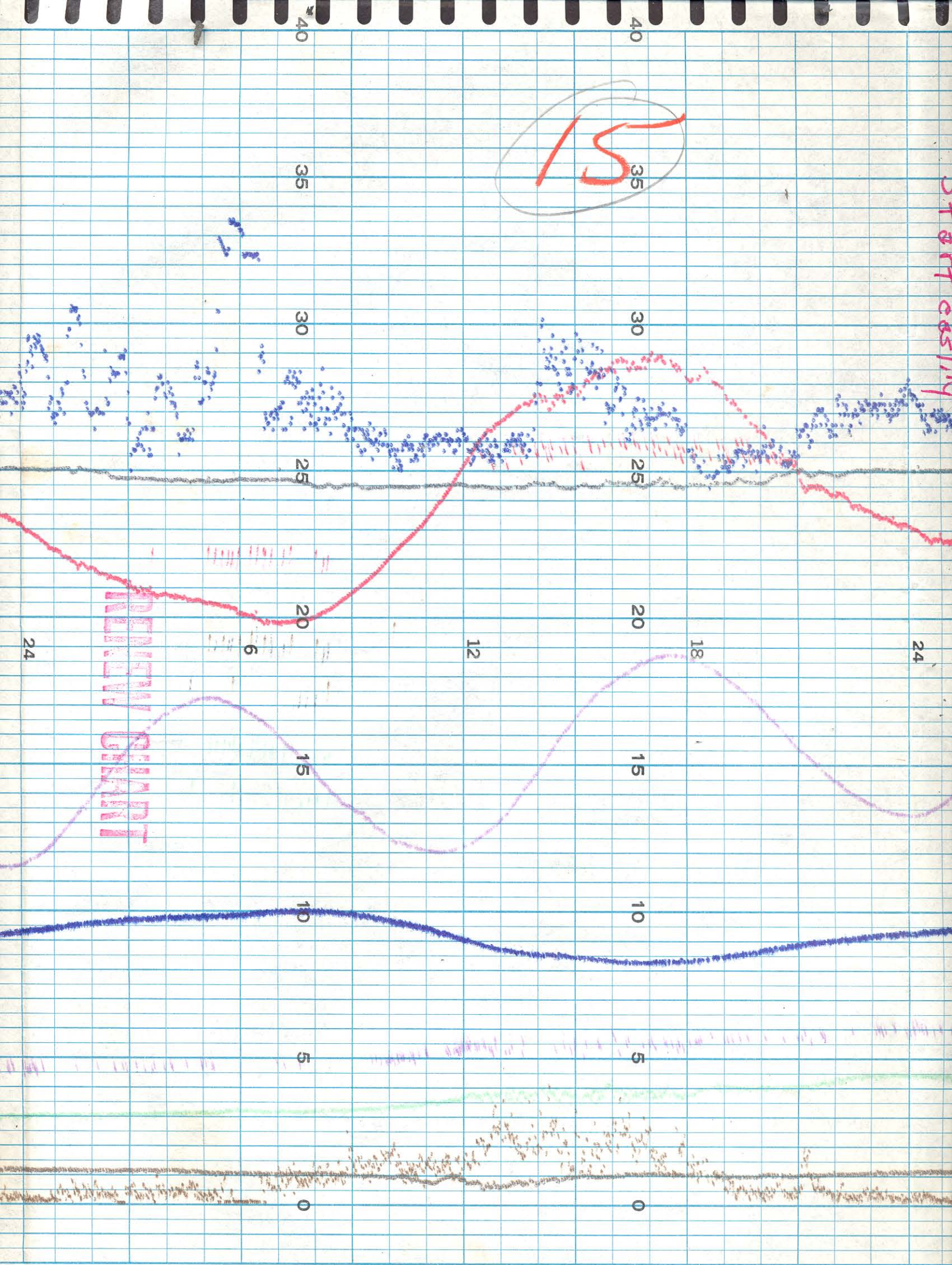












9

16 Sept 69

chart 1/2 hour slow  
got pump going  
at 1335 BST

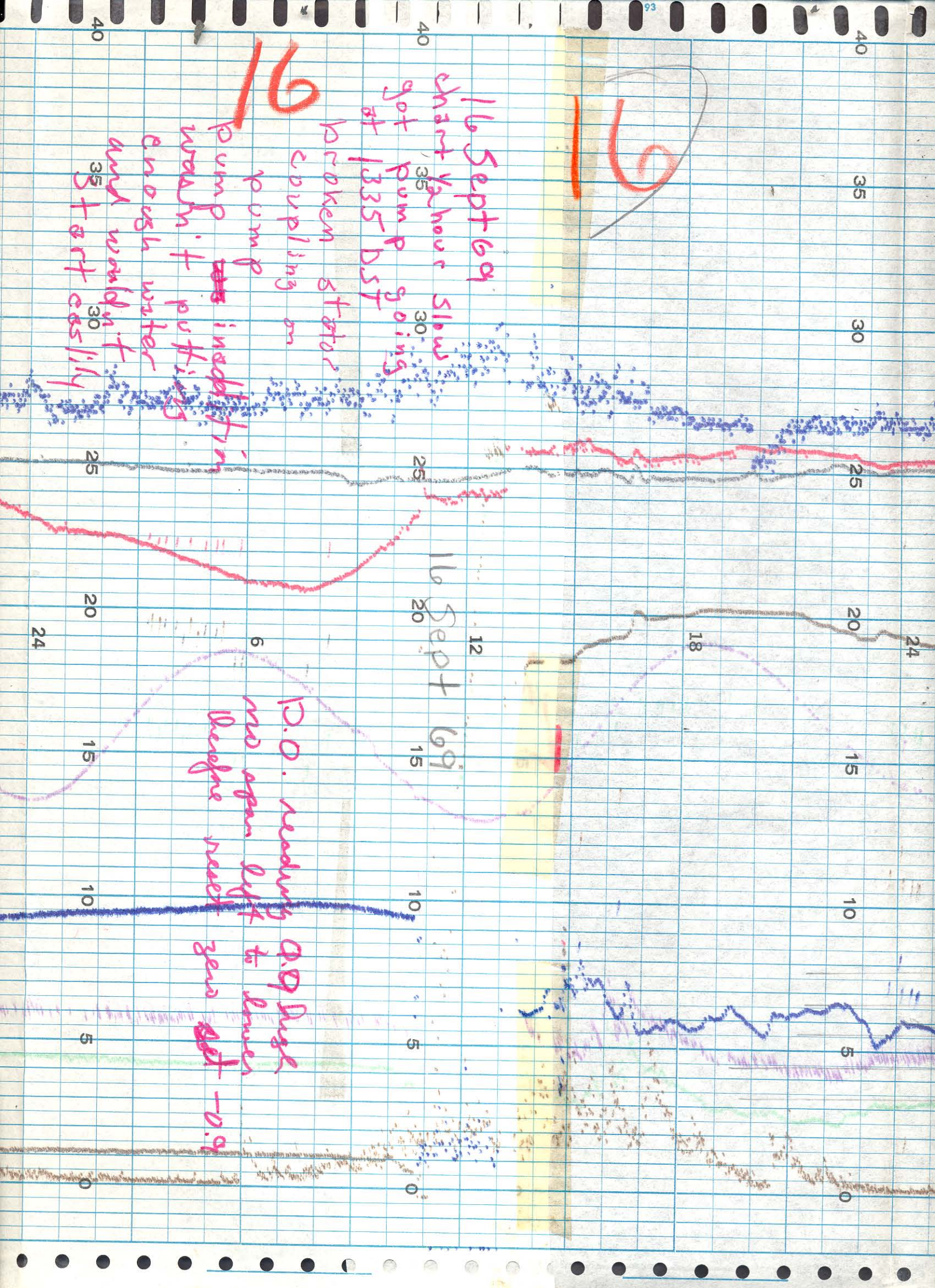
broken stator  
coupling on

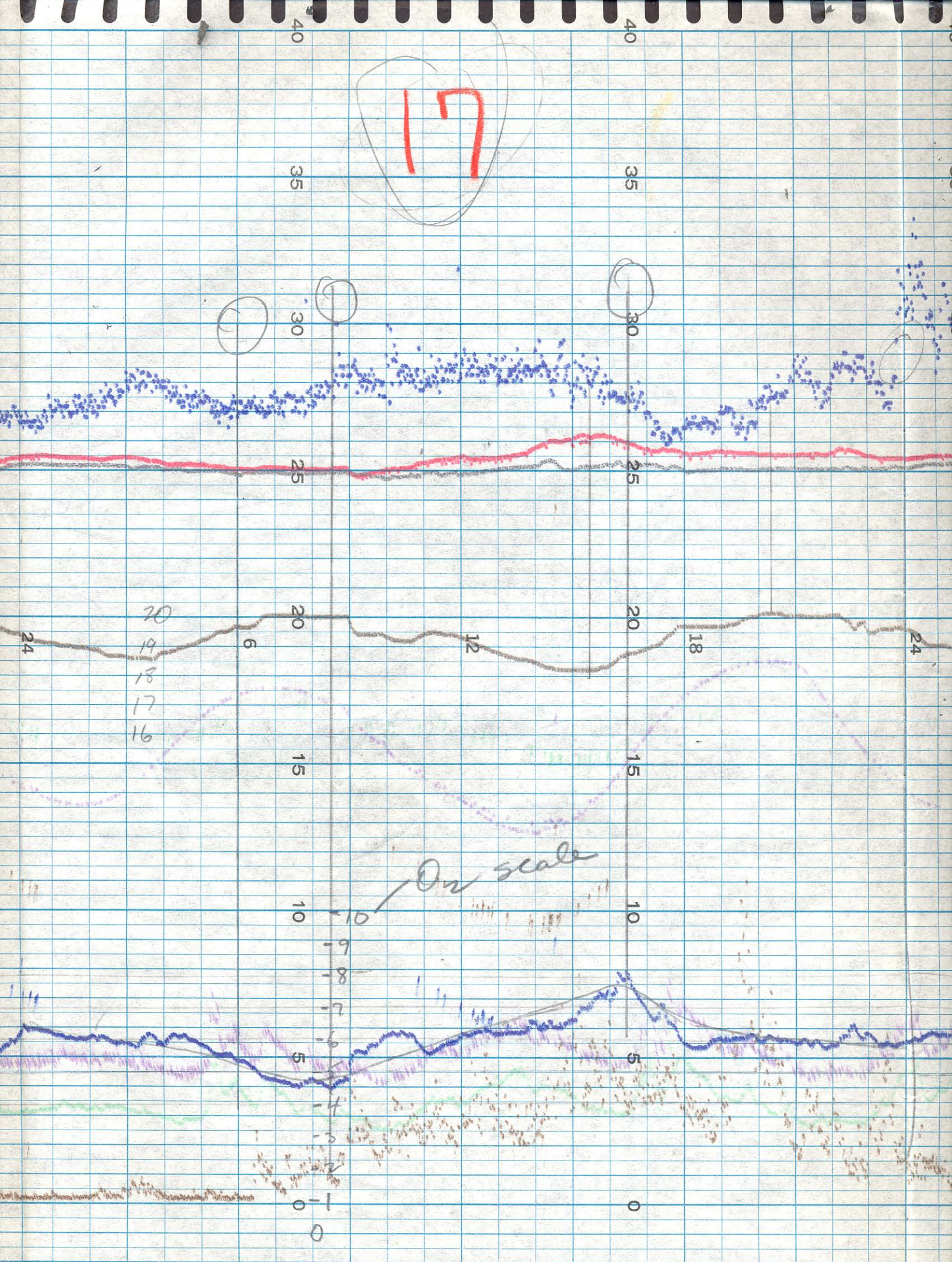
pump ~~was~~ in addition  
wash + putting

enough water  
and wouldn't  
start easily

16 Sept 69

I.D.O. reading 9.9 fuses  
no open left to lower  
degree next zero -0.9





81

24

35

30

25

20

15

10

5

0

18

12

35

30

25

20

15

10

5

0

6

35

30

25

20

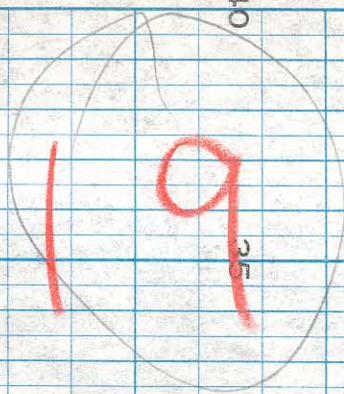
15

10

5

0

24



24

40  
35  
30  
25  
20  
15  
10  
5  
0

18

40  
35  
30  
25  
20  
15  
10  
5  
0

12

6

35  
30  
25  
20  
15  
10  
5  
0

24

20

24

18

20

15

10

5

0

12

35

30

25

20

15

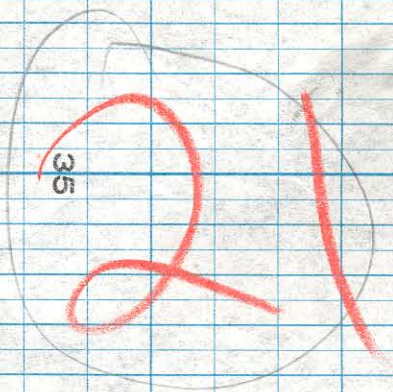
10

5

0

6

24



24

35

30

25

20

15

10

5

0

18

12

35

30

25

20

15

10

5

0

6

35

30

25

20

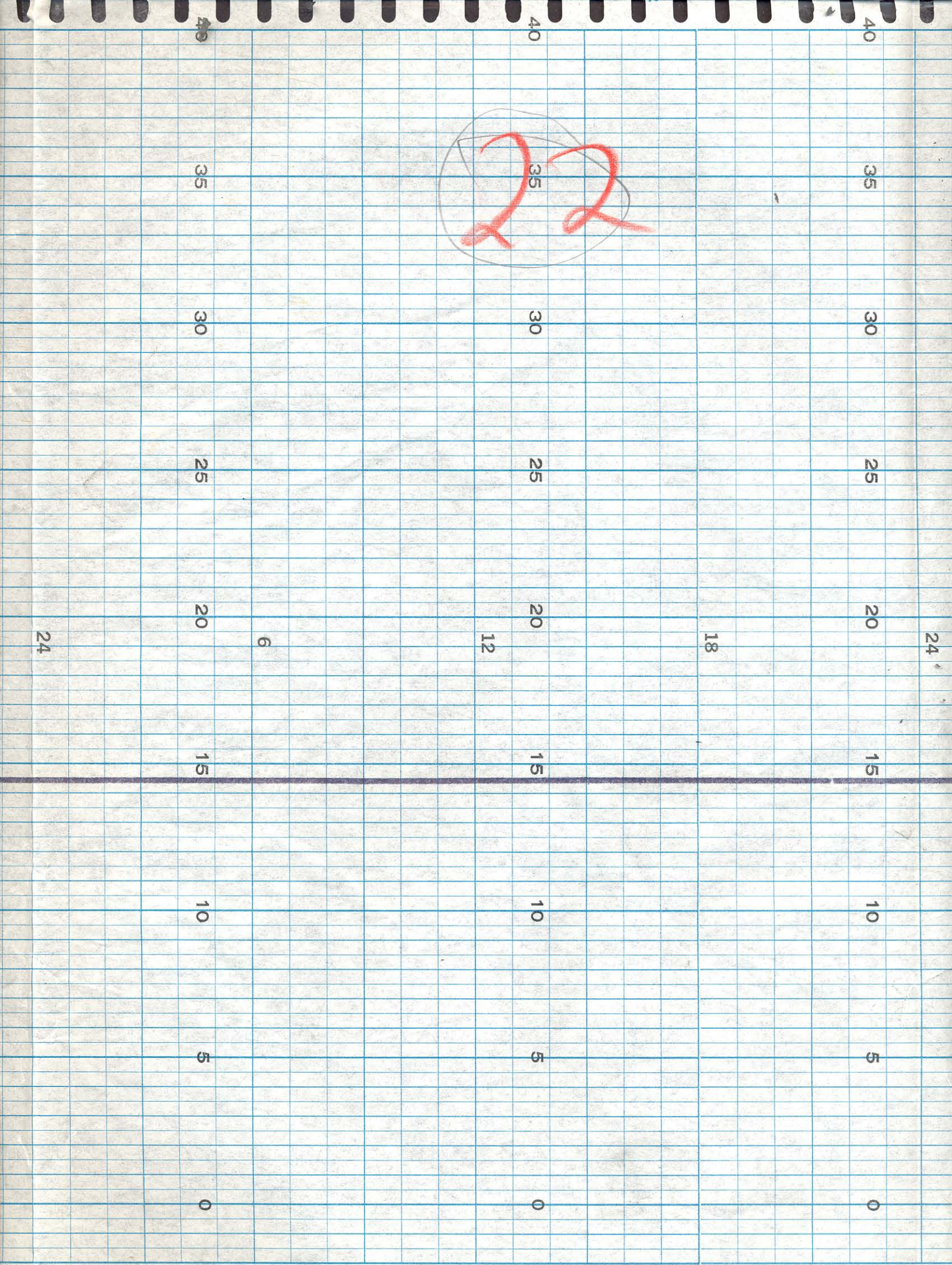
15

10

5

0

24



23

40  
35  
30  
25  
20  
15  
10  
5  
0

40  
35  
30  
25  
20  
15  
10  
5  
0

24

6

12

18

24

24

24

35

30

25

20

15

10

5

0

18

12

35

30

25

20

15

10

5

0

6

35

30

25

20

15

10

5

0

24

40

40

40

35  
28

24

35

30

25

20

15

10

5

0

18

35

30

25

20

15

10

5

0

12

35

30

25

20

15

10

5

0

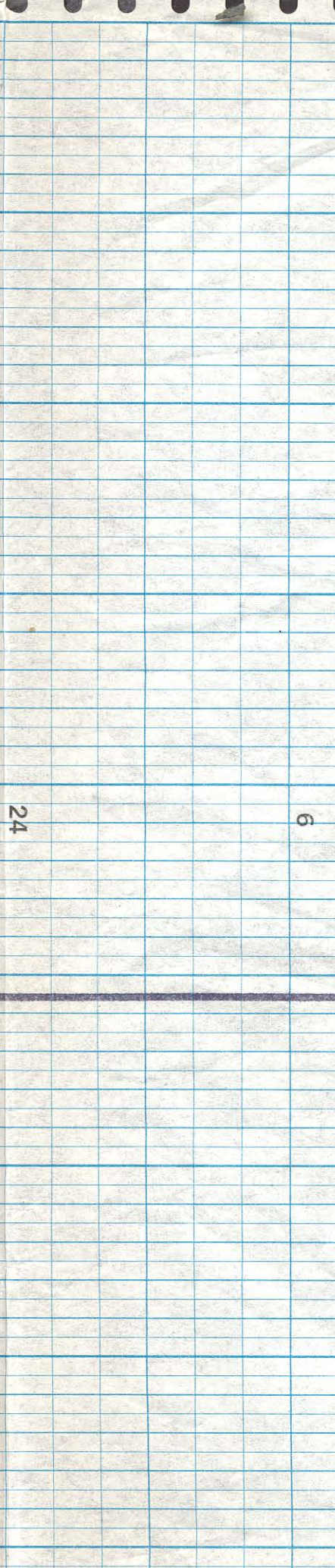
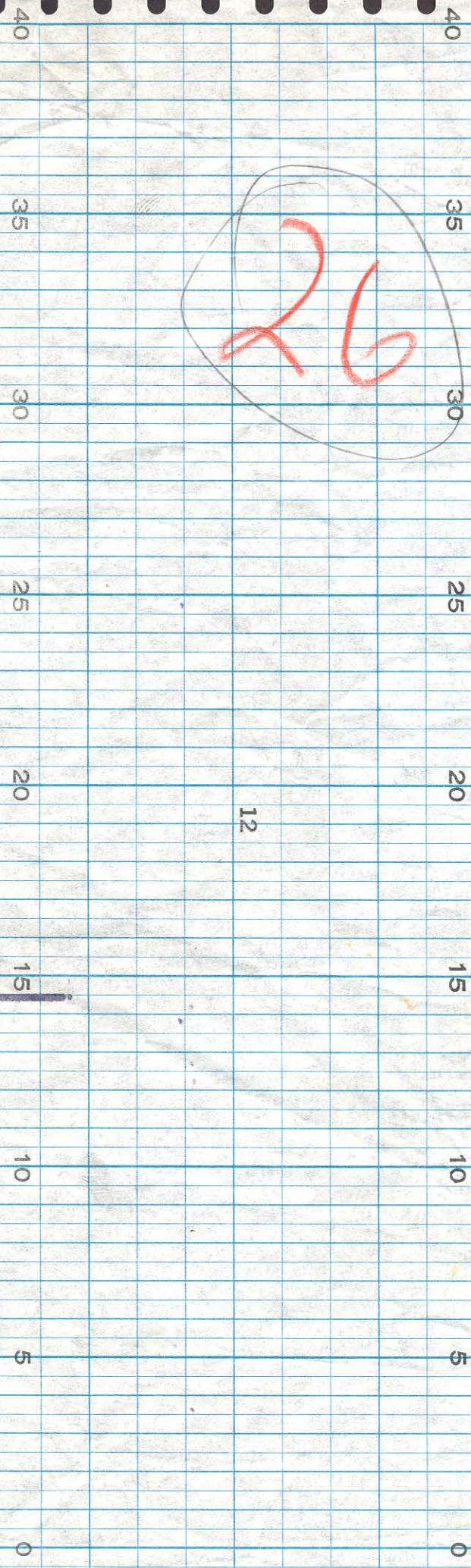
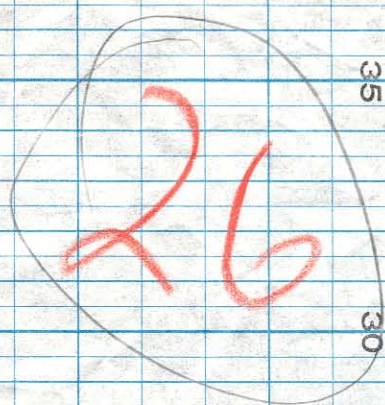
6

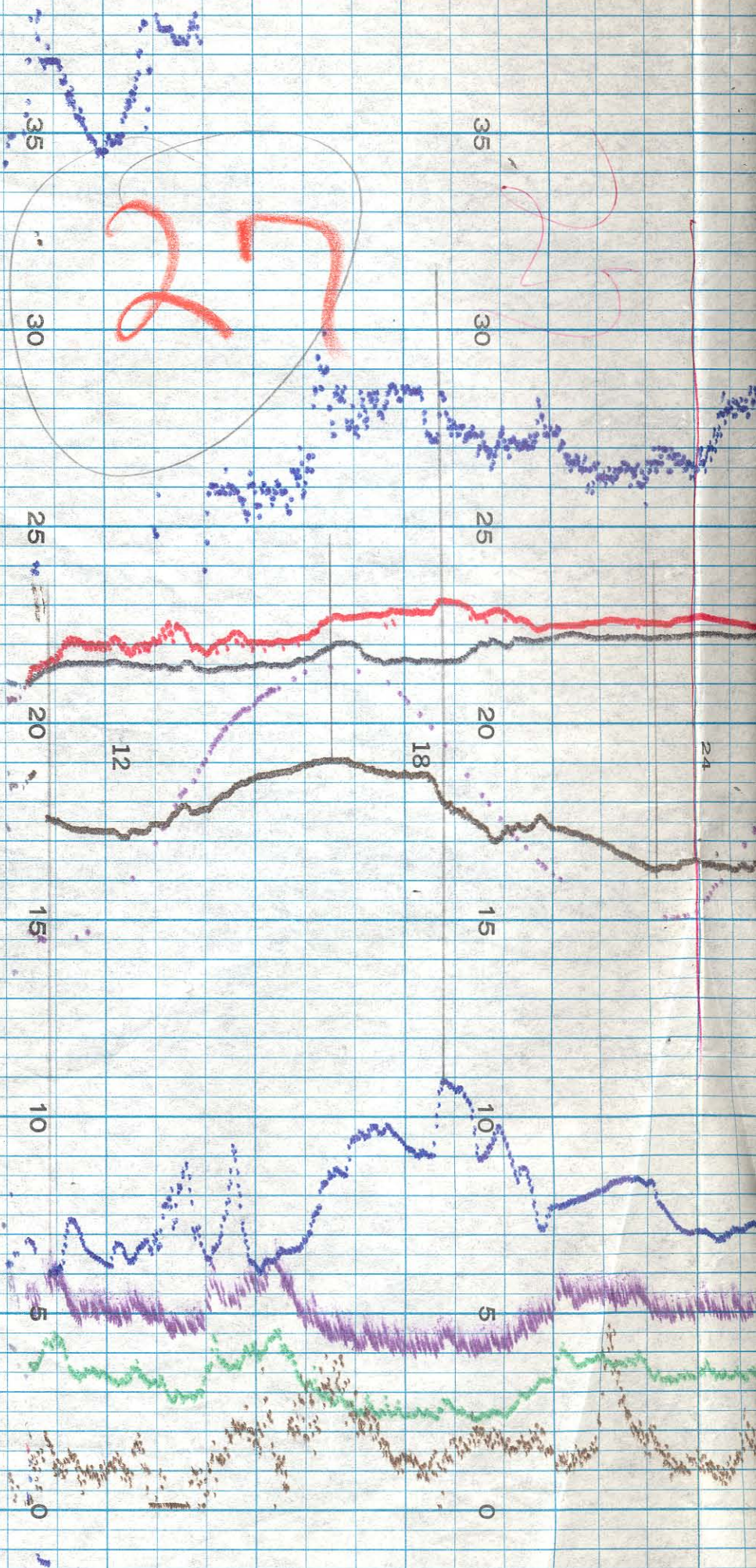
24

Chart

Drum Cable

Broken



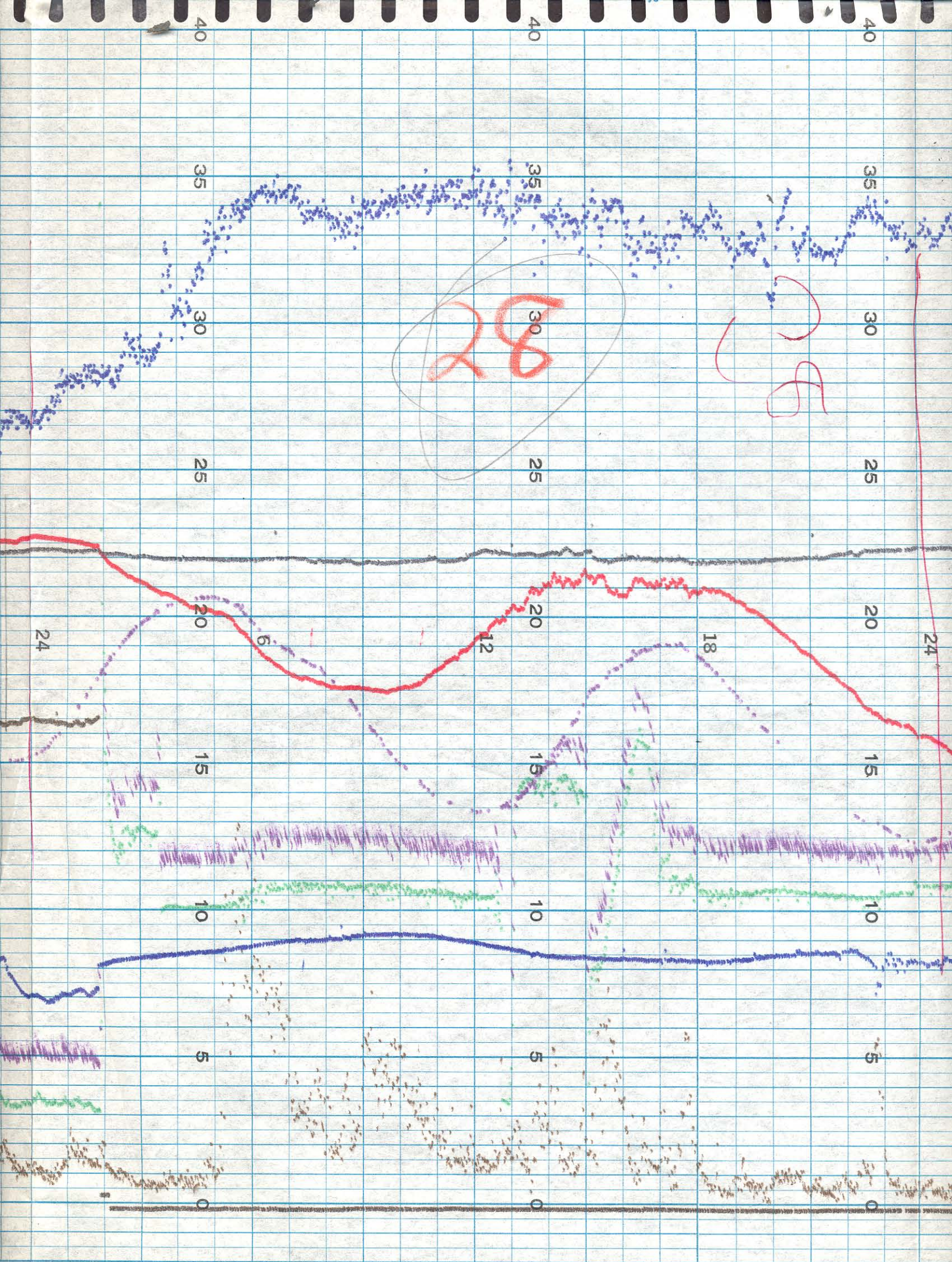


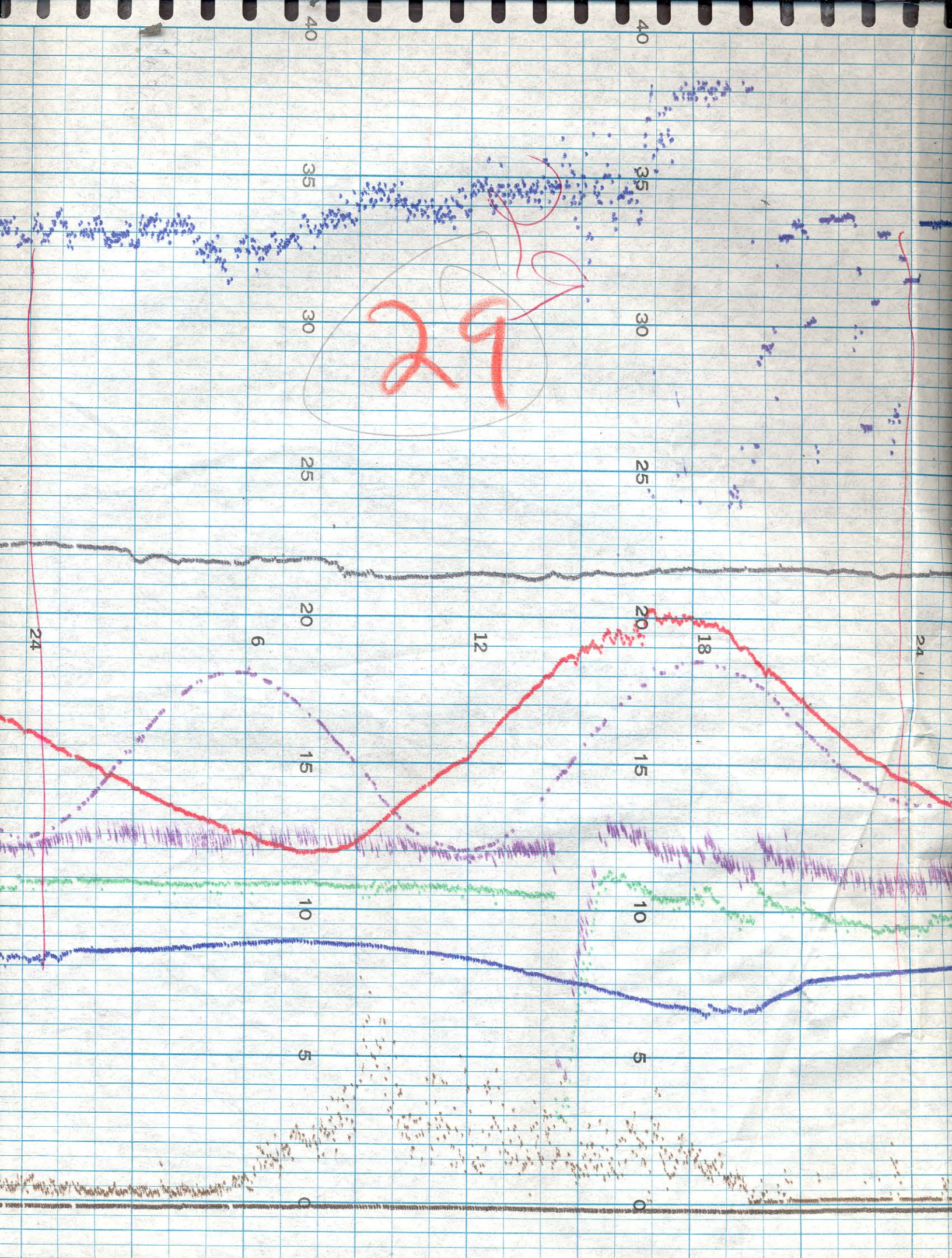
Sept 27 1964

6

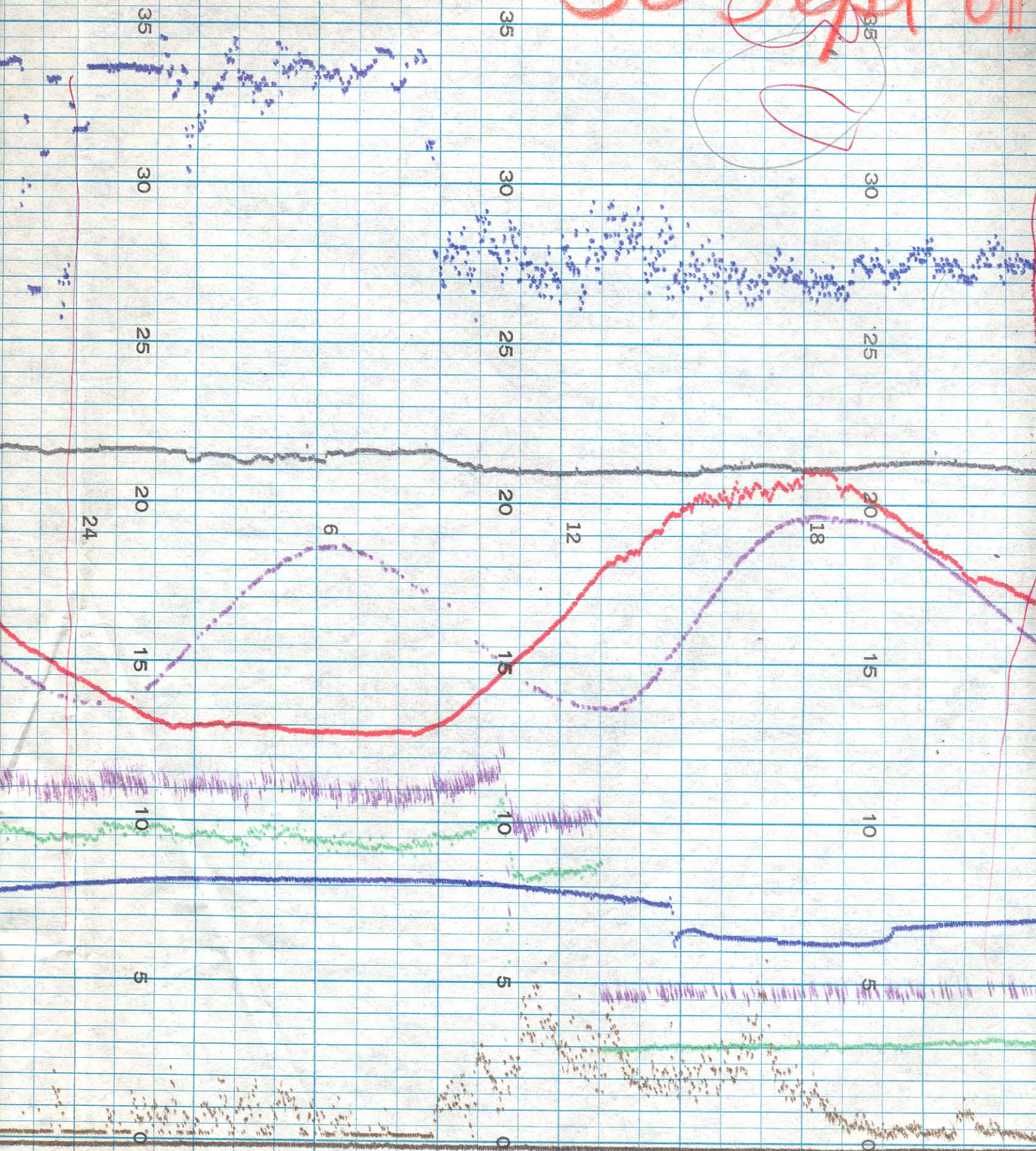
*[Handwritten signature]*

24





30 Sept 69



Month	Aug.	Aug.	Sept		Sept
Day	21, 69	28	5		16
Time	0900	0930	1000		1410
Sur. Temp.	chart. 25.5	25.6	26.7		25.6
	Temp. 25.4	25.6	27.0		25.4
Bottom Temp.	chart. <sup>24.2</sup> <del>24.2</del>	25.4	26.3		25.0
	Temp. <del>27.7</del> 23.9	—			
Conductivity	chart 16.3 before Clean 17.1 after + 8	14.4 before Clean 16.4 after	16.4 before 17.2 After 34.2		36.2
	Cond. 33.1 kel <del>recept</del> 32.0	32.6 32.9 @ 21.6°C	Reset again + 1.400 35.8 @ 25.3°C		36.2 @ 26.5°C
Dissolved Oxygen	chart 5.7 <del>5.6</del>	3.8 before Clean 5.6 after Clean 5.5	6.2 before 6.5 After 8.5		6.2
	Winkler 5.4 5.5	4.8 5.1	5.6 <del>8.5</del> 6.9		5.3
Turb.	chart. 24.5	—			37
	Waller 19				23
Tide	chart +1.3	+ .4	+ 1.7		+ 1.2
	Staff x 1.6	+ .4	+ 1.7		+ .2
Wind Dir.	chart N		<del>SE</del>		SSW
	Dir. N		SE		SSW
Wind Vol.	chart 10		2		5
	Vol. 10		3		6

Reset Cond. + 1.402 was loose and water level was low

D.O. seemed to be reading high, however D.O. was changing rapidly

Reset Cond. trigger arm

6.5  
5.6/9  
1.6

notes